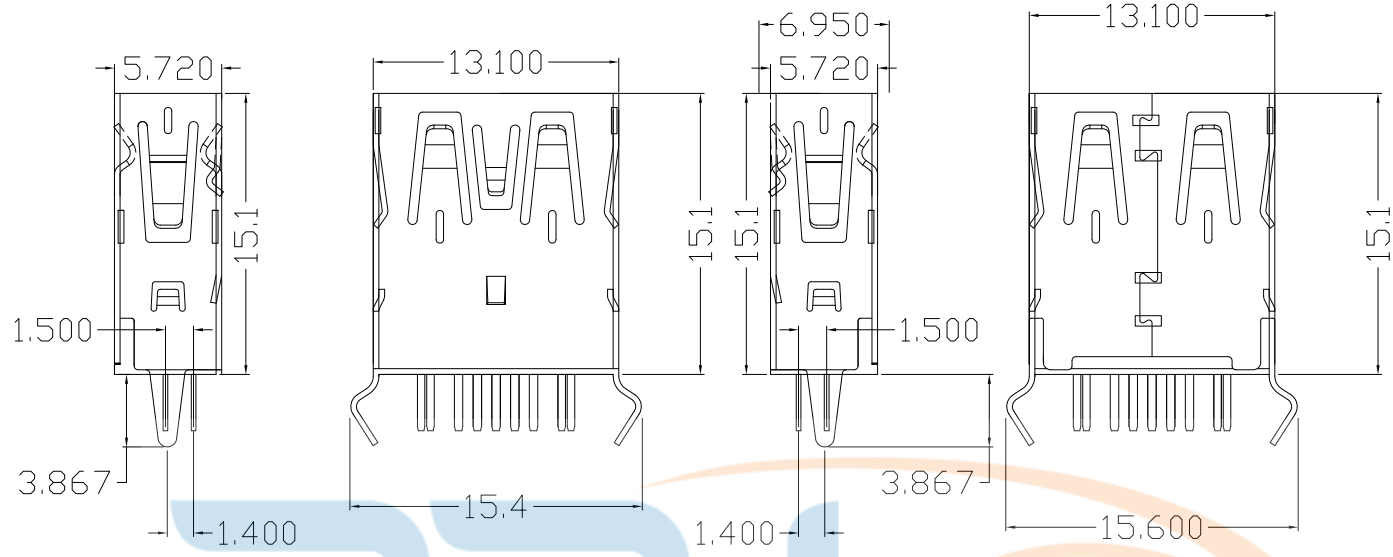




REV.	DESCRIPTION	NAME	DATE
A	NEWS ISSUE		



规格说明: Specifications:

电气特性: Electrical:

1. 额定电流: Current Rating
1.5A/contact terminal
2. 额定电压: Voltage Rating
30V DC
3. 接触阻抗: Contact Resistance
30 milliohms MAX
4. 耐电压: Dielectric Withstanding Voltage:
500 V AC AT Sea Level
5. 绝缘阻抗: Insulation Resistance:
1000MEGA ohms MIN

1. 插拔力: Connector Mate and Unmate Force
Mate force: 3.57kgf (MAX)
Unmate force: 1.02kgf (MIN)
2. 端子保持力: Terminal Retention
1.0kgf (MIN)

1. 塑胶: Housing:
Hing Temperature Thermoplastics,

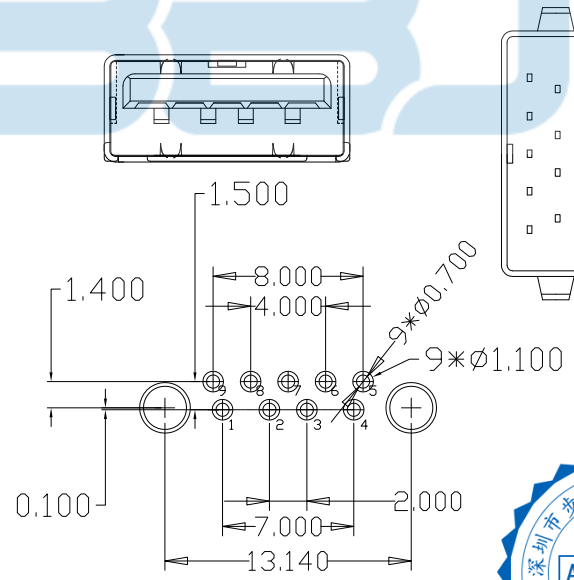
2. 端子: Contact: Copper Alloy C2680
3. 外壳: Shell: Copper Alloy C2680/SPCC

电镀: Finish:

1. 端子: Contact: Plated Gold in Mating Area;
Tin On Solder Tails

端子四周镀 30-50U" (MIN) 锡, "镀金 1U"

2. 外壳: Shell:
铁壳四周镀 80U" (MIN) 镍, 铜壳四周镀 60-80U" (MIN) 镍
Nickel Plating



P. C. B LAYOUT
TOL: ±0.05

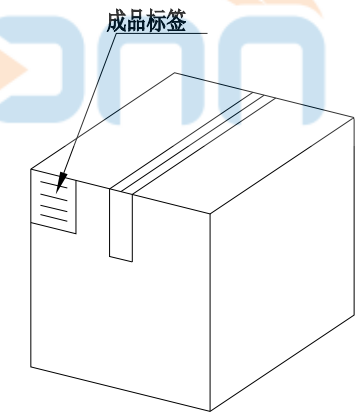
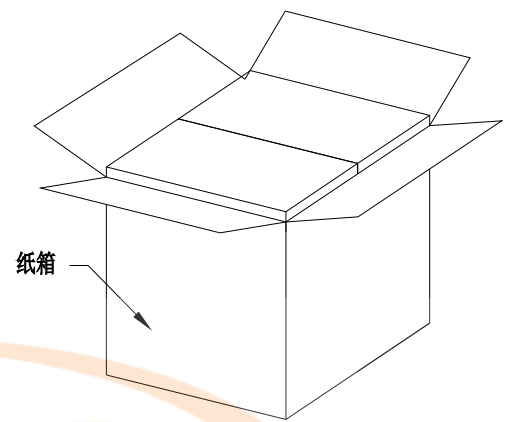
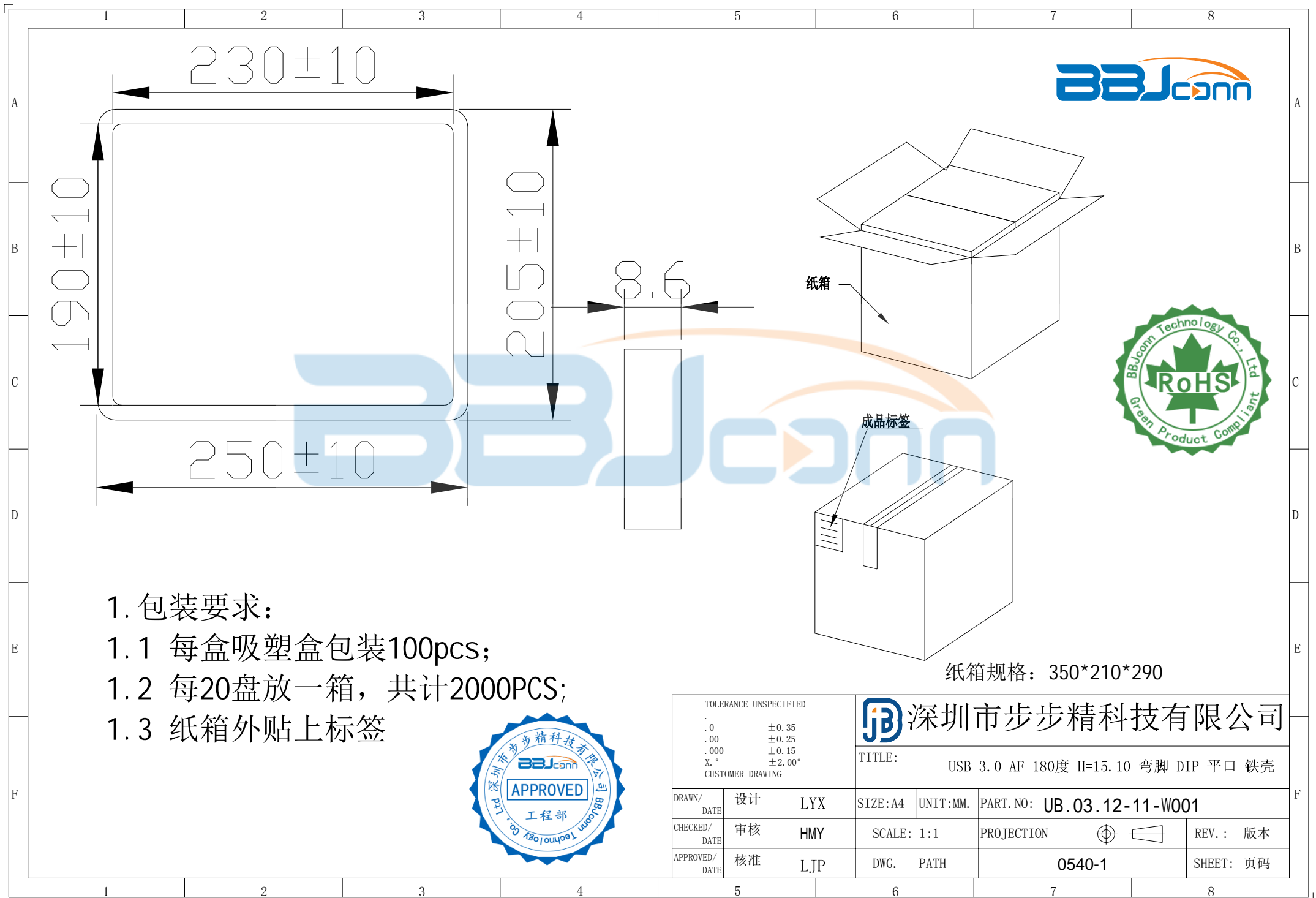


TOLERANCE UNSPECIFIED	
.0	±0.35
.00	±0.25
.000	±0.15
X. °	±2.00°
CUSTOMER DRAWING	

BBJconn 深圳市步步精科技有限公司

TITLE: USB 3.0 AF 180度 H=15.10 弯脚 DIP 平口 铁壳

DRAWN/ DATE	设计 LYX	SIZE: A4	UNIT: MM.	PART. NO: UB.03.12-11-W001
CHECKED/ DATE	审核 HMY	SCALE: 1:1	PROJECTION	REV.: A0
APPROVED/ DATE	核准 LJP	DWG. PATH	0540-1	SHEET: 页码



纸箱

成品标签

纸箱规格：350*210*290

1. 包装要求:

- 1.1 每盒吸塑盒包装100pcs;
- 1.2 每20盘放一箱，共计2000PCS;
- 1.3 纸箱外贴上标签



TOLERANCE UNSPECIFIED		深圳市步步精科技有限公司 TITLE: USB 3.0 AF 180度 H=15.10 弯脚 DIP 平口 铁壳								
.0	±0.35									
.00	±0.25	DRAWN/ DATE		设计	LYX	SIZE: A4	UNIT: MM.	PART. NO: UB.03.12-11-W001		
.000	±0.15	CHECKED/ DATE		审核	HMY	SCALE: 1:1		PROJECTION	REV.: 版本	
X.°	±2.00°	APPROVED/ DATE		核准	LJP	DWG. PATH	0540-1		SHEET: 页码	
CUSTOMER DRAWING										