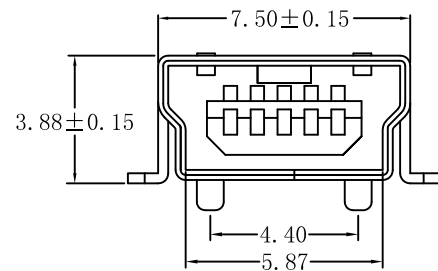
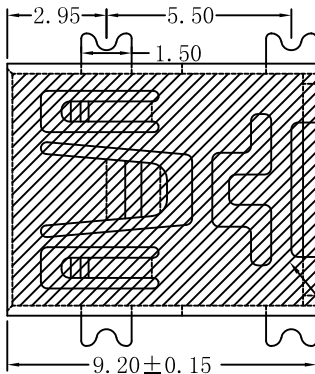
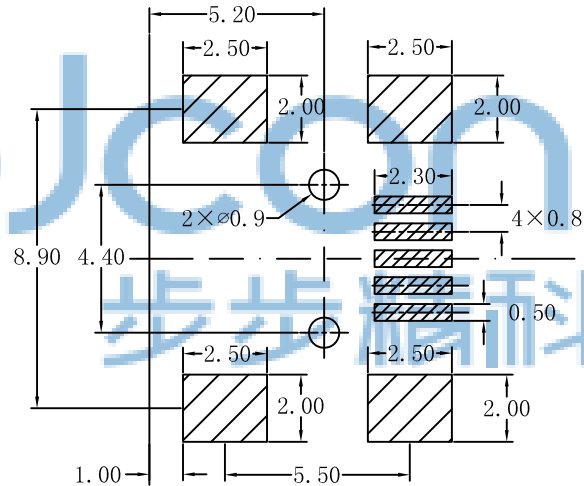
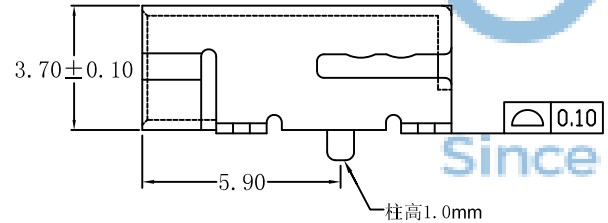


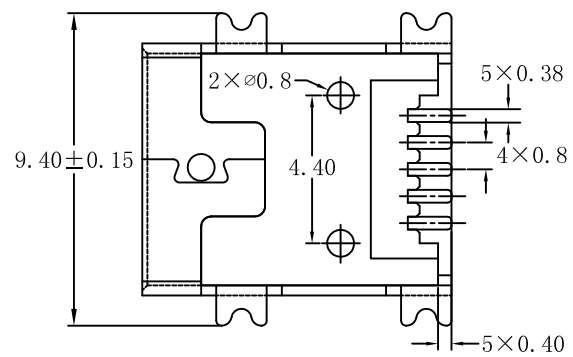
REV.	DESCRIPTION	NAME	DATE
A	NEWS ISSUE		



麦拉片



RECOMMENDED PCB LAYOUT

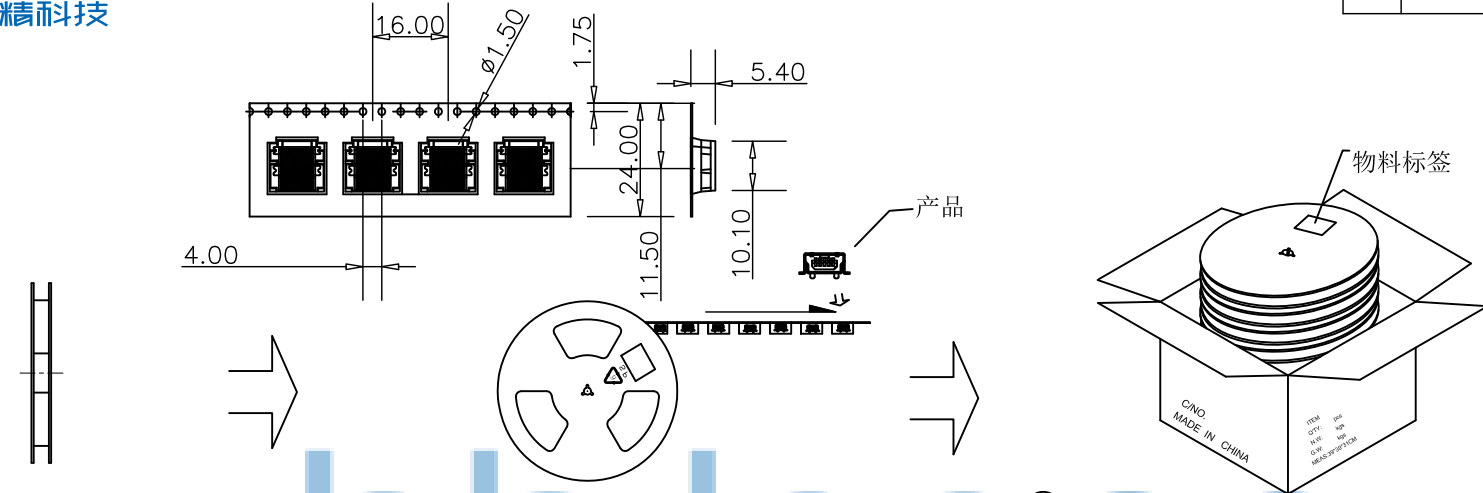


- 规格说明: Specifications:  
电气特性: Electrical:
- 额定电流: Current Rating  
1.0A/contact terminal
  - 额定电压: Voltage Rating  
30V DC
  - 接触阻抗: Contact Resistance  
50 milliohms MAX
  - 耐压: Dielectric Withstanding Voltage:  
300 V AC AT Sea Level
  - 绝缘阻抗: Insulation Resistance:  
100MEGA ohms MIN
- 原材料: Raw material:
- 塑胶: Plastic cement:  
Hing Temperature Thermoplastics,  
LCP Black
  - 端子: Contact: Copper Alloy C2680/C5191
  - 外壳: Shell: SPCC/Copper Alloy C2680
- 电镀: Electroplate:
- 端子: Contact: Plated 1u" Min Gold in Mating Area;  
100u" Tin On Solder Talls
  - 外壳: Shell:  
60u" Nickel Plating



TOLERANCE UNSPECIFIED		深圳市步步精科技有限公司			
.0	±0.30	TITLE:			
.00	±0.25	MINI-5P 母座 L=9.20 全贴带柱 0.3壳 贴膜 平口 LCP黑色 铜壳 冷封编带			
.000	±0.15	DRAWN/ DATE	设计 HMY	SIZE: A4	UNIT: MM.
X. °	±2.00°	CHECKED/ DATE	审核 LYX	PART. NO: UB.07.22-12-9002	
CUSTOMER DRAWING		APPROVED/ DATE	核准 LJP	SCALE: 1:1	PROJECTION
				DWG. PATH	REV.: 版本
					SHEET: 页码
				0064-2	

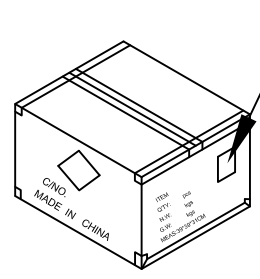
REV.	DESCRIPTION	NAME	DATE
A	NEWS ISSUE		



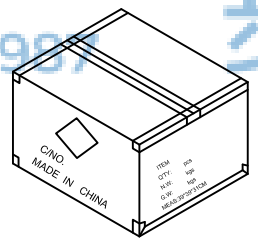
① 胶盘

② 1000pcs/盘

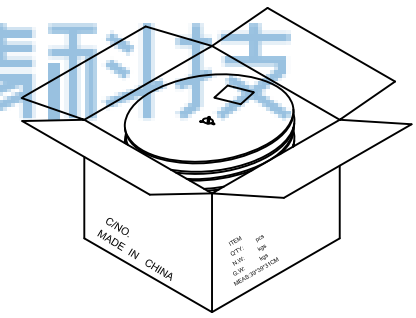
③ 10盘/箱(10 Kpcs)



⑥ 依图示粘贴产品或ROHS标签.



⑤ 外箱用透明胶纸带封“工”字型.



④ 每箱装10盘,若尾数箱在空间处加装填充物.

- 备注:
1. 胶盘规格: 380\*24mm
  2. 每盘装1.0K pcs;
  3. 每箱装10盘(10K pcs);
  4. 外箱尺寸:长\*宽\*高:39\*39\*31cm;
  5. 外箱用透明胶纸带封“工”字型;
  6. 依外箱图示位置粘贴好产品或ROHS标签.



TOLERANCE UNSPECIFIED		深圳市步步精科技有限公司 TITLE: MINI-5P 母座 L=9.20 全贴带柱 0.3壳 贴膜 平口 LCP黑色 铜壳 冷封编带				
.0	±0.30					DRAWN/ DATE
.00	±0.25	CHECKED/ DATE	审核 LYX	SCALE: 1:1	PROJECTION	REV.: 版本
.000	±0.15	APPROVED/ DATE	核准 LJP	DWG. PATH	0064-2	SHEET: 页码
X.°	±2.00°					
CUSTOMER DRAWING						