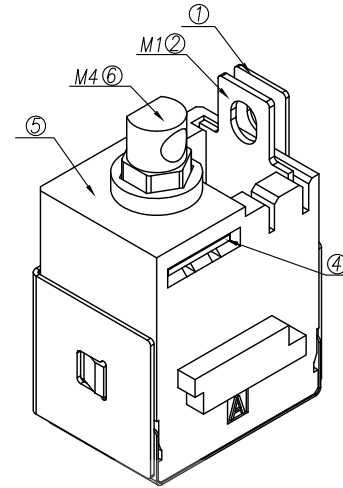
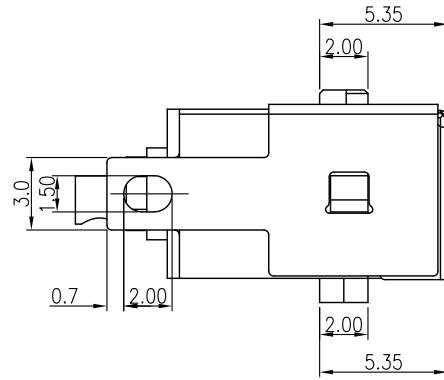
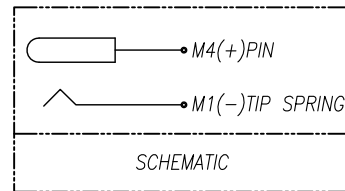
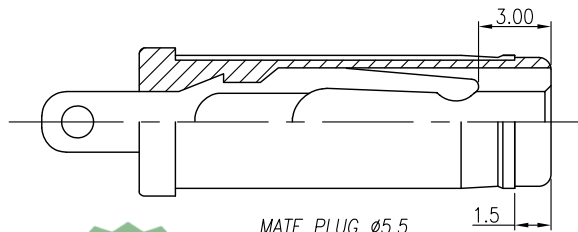
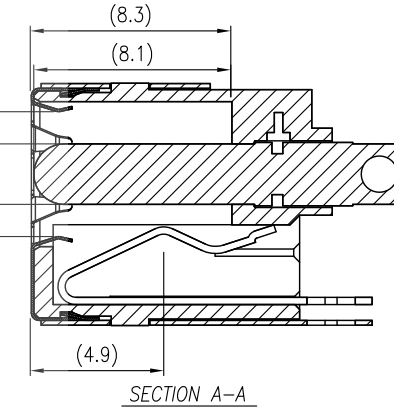
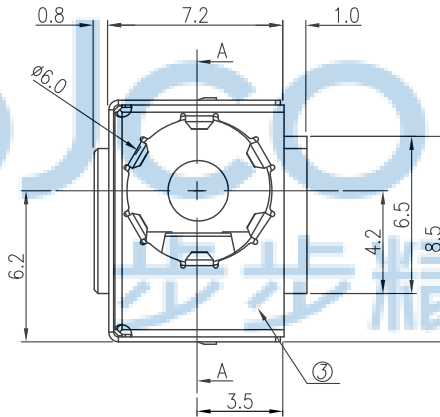
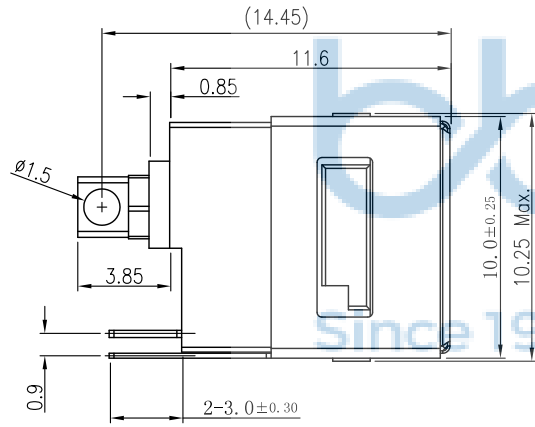


REV.	ECN NO.	CONTENT	DATE	ENGINEER
AO			2023 20/04	



- SPECIFICATIONS:
- ELECTRICAL CHARACTERISTICS:
    - RATING: 20V, 10A .
    - CONTACT RESISTANCE: 50 MILLIOHMS Max. FOR INITIAL, 80 MILLIOHMS Max. AFTER 5000 CYCLES.
    - INSULATION RESISTANCE: 100 MEGAOHMS Min. BY 500V DC AFTER 1 MINUTE.
    - DIELECTRIC WITHSTANDING VOLTAGE: 500V RMS AFTER 1 MINUTE.
  - MECHANICAL CHARACTERISTICS:
    - INSERTION FORCE : 0.3~3.0 KGF (2.94~29.4N)
    - WITHDRAWAL FORCE : 0.3~3.0 KGF (2.94~29.4N)
  - LIFE TEST: 5,000 CYCLES MIN.



⑥	PIN	1	BRASS BAR	Au-Plated
⑤	HOUSING	1	HIGH TEMP.THERMOPLASTIC	Black
④	TERMINAL	1	STAINLESS STEEL t=0.30	N/A
③	GROUND	1	STAINLESS STEEL t=0.10	Ni-Plated
②	TIP SPERING	1	COPPER ALLOY t=0.20	Ag-Plated
①	SHFLL	1	STAINLFSS STFFL t=0.20	Sn-Plated



THIS DOCUMENT IS THE SOLE PROPERTY OF **BBJconn Technology Co.,Ltd.** 深圳市步步精科技有限公司

Corporation AND SHOULD NOT BE USED IN WHOLE OR IN PART WITHOUT PRIOR WRITTEN PERMISSION.

NAME: DC插座 2.5针 180度 焊线式 大电流10A (DC550250-0114-60000H)

APPD. JM\_Zheng 23/05'02

CHKD. LYX 23/05'02

DR. SGF 23/05'02

PJ. NO.: DC.02.72-11-G002

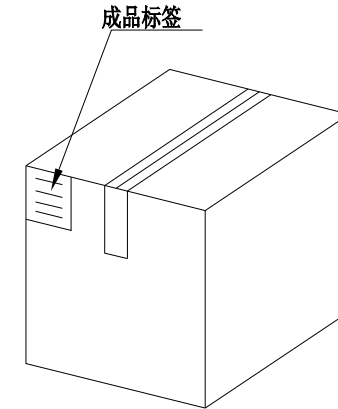
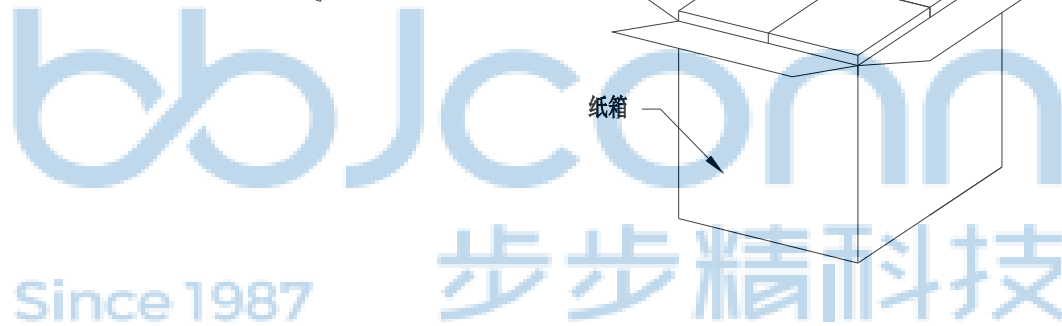
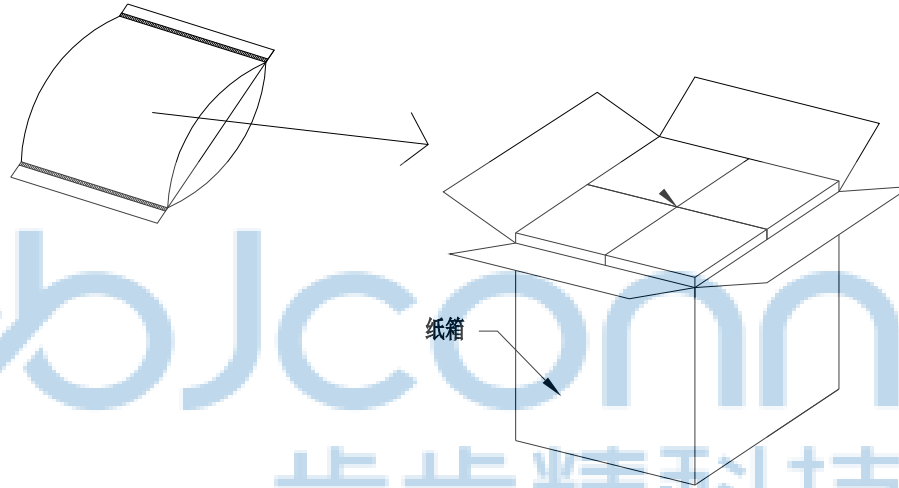
SIZE: A4 | DRW NO.:

FINISH: SEE NOTES | MAT'L.: SEE NOTES

SCALE: N/A | REV.: A3 | UNIT: mm | PAGE: 1/1

REV.	ECN NO	CONTENT	DATE	ENGINEER
A0			2023 20/04	

PE袋规格:\*\*\*X\*\*\* (以实际出货为准)



1. 包装要求:

- 1.1 每PE袋包装500pcs;
- 1.2 每1袋放一小纸盒;
- 1.3 每20个小纸盒放一个纸箱, 共计10000PCS
- 1.4 纸箱外贴上标签



THIS DOCUMENT IS THE SOLE PROPERTY OF BBJconn Technology Co., Ltd. Corporation AND SHOULD NOT BE USED IN WHOLE OR IN PART WITHOUT PRIOR WRITTEN PERMISSION.		深圳市步步精科技有限公司 .X: ±0.38    X': ±3" .XX: ±0.25    .X": ±2" .XXX: ±0.13    .XX": ±1"		NAME: DC插座 2.5针 180度 焊线式 大电流10A (DC550250-0114-60000H)	
APPD.	JM_Zheng	23/05'02	PJ. NO.: DC.02.72-11-G002 SIZE: A4   DRW NO.:		
CHKD.	LYX	23/05'02	FINISH: SEE NOTES    MAT'L.: SEE NOTES		
PDWG.NO: 0386-2	DR.	SGF	23/05'02	SCALE: N/A	REV.: A3   UNIT: mm   PAGE: 1/1