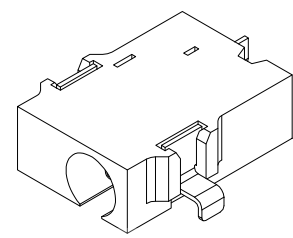
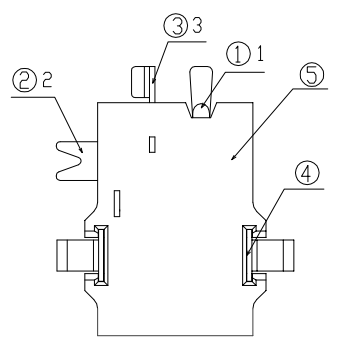
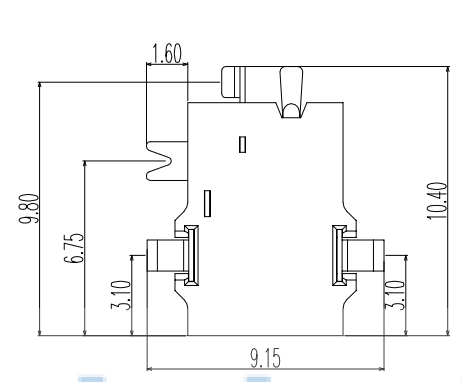
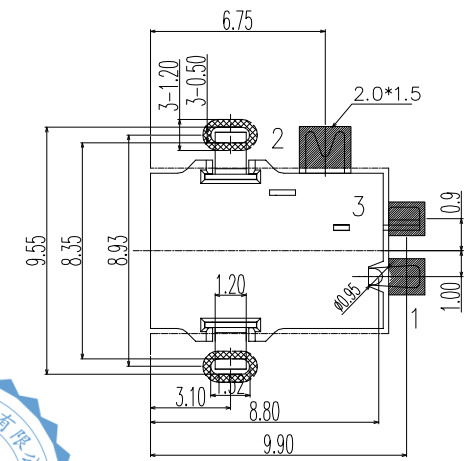


REV.	ECN NO.	CONTENT	DATE	ENGINEER
AO			2023 20/04	

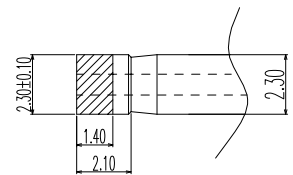
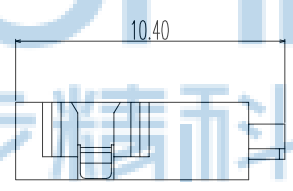
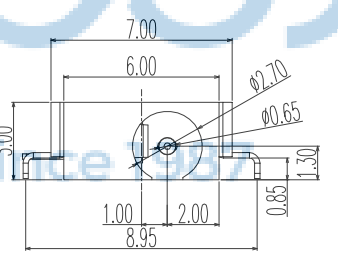
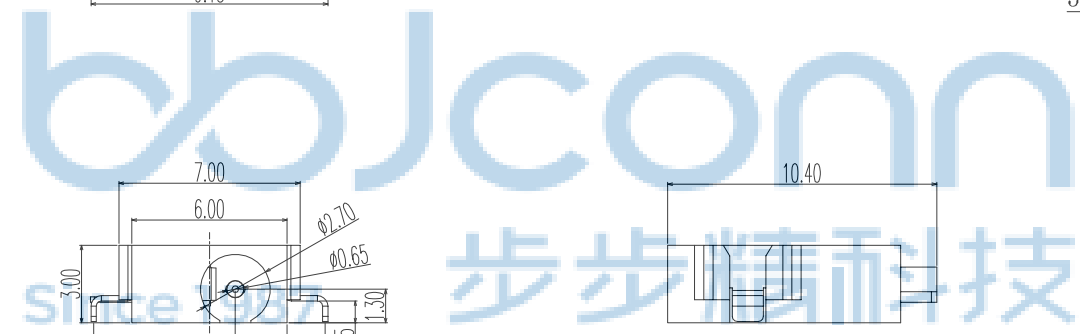
- NOTES:
- CONTACT CURRENT RATING: 1A.
 - CONTACT RESISTANCE: 50 mΩ MAX.;
 - INSULATION RESISTANCE: 100MΩ MIN.;
 - DIELECTRIC WITHSTANDING: 500V AC MIN.;
 - DURABILITY: 5,000 CYCLES MIN.;
 - CONNECTOR MATING FORCES: 29.4N (3.00Kgf) MAX.;
 - CONNECTOR UNMATING FORCES: 2.94N(0.30Kgf) MIN.;



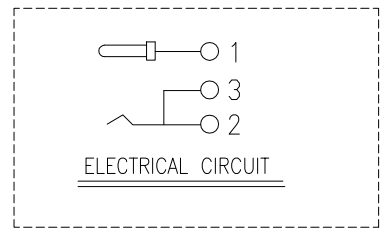
3D VIEW



RECOMMENDED PCB LAYOUT
TOP VIEW (TOLERANCE:±0.05)



MATE PLUG



ELECTRICAL CIRCUIT

5	HOUSING	1	HIGHT TEMPERATURE PLASTIC	Blac
4	TERMINAL 3	2	BRASS 0.2t	SILVER PLATING OVERALL
3	TERMINAL 2	1	PHOSPHOR BRONZE 0.2t	GOLD PLATING OVERALL
2	TERMINAL 1	1	BRASS 0.2t	GOLD PLATING OVERALL
1	CENTER PIN	1	BRASS 0.65	SILVER PLATING OVERALL
NO.	DESCRIPTION	QTY	MATERIAL	PLATING & COLOR

THIS DOCUMENT IS THE SOLE PROPERTY OF **深圳市步步精科技有限公司**

BBJconn Technology Co.,Ltd.
Corporation AND SHOULD NOT BE USED IN WHOLE OR IN PART WITHOUT PRIOR WRITTEN PERMISSION.

PDWG.NO: 0076-1

NAME: DC座 DC-0.65针 全铜 沉板0.85 两脚插 三脚贴 (DCJR0001-F04G1BR-A)

PJ. NO.: DC.03.12-12-B001

SIZE: A4 | DRW NO.:

FINISH: SEE NOTES | MAT'L.: SEE NOTES

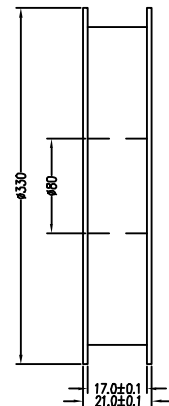
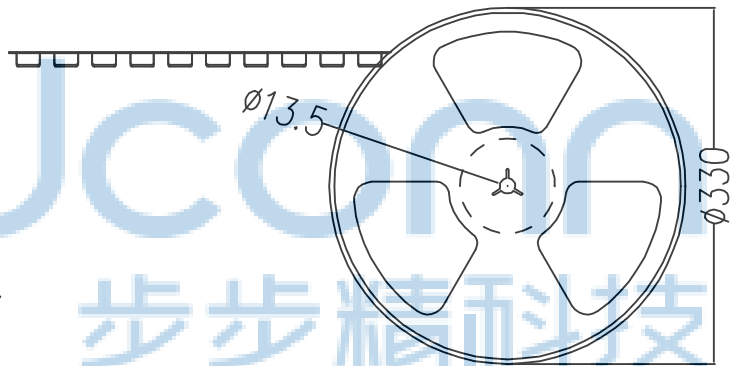
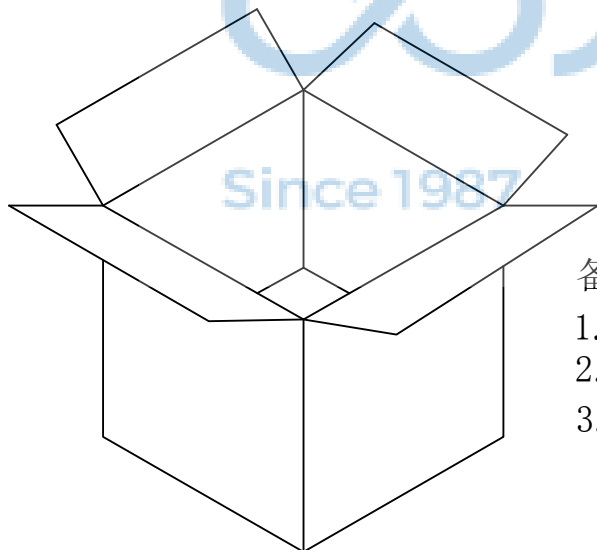
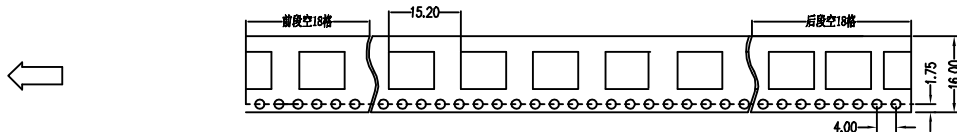
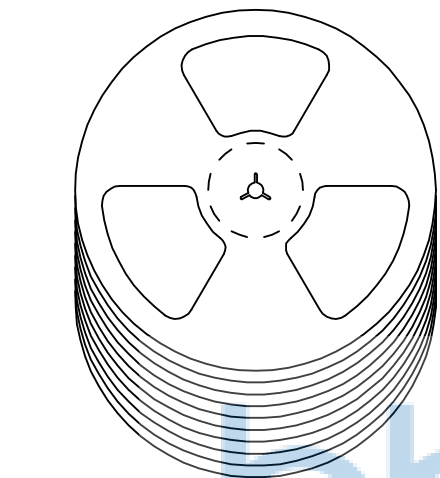
SCALE: N/A | REV.: A3 | UNIT: mm | PAGE: 1/1

APPD. JM_Zheng 23/05'02

CHKD. LYX 23/05'02

DR. SGF 23/05'02

APPROVED



备注:

1. 包装数量: 1000/PCS/卷, 10卷/箱或15卷/箱。
2. 包装袋长度: 每卷前后各空10-20个空格, 中间包装。
3. 材质:
 载体: 聚丙烯 (PS), 阻抗 $10^{6-9} \Omega$
 上带: 聚乙烯 (PET), 阻抗 $10^{6-11} \Omega$
 卷盘: 聚苯乙烯。

纸箱规格: 345*345*23MM

纸箱规格: 345*345*35MM

THIS DOCUMENT IS THE SOLE PROPERTY OF BBJconn Technology Co.,Ltd. Corporation AND SHOULD NOT BE USED IN WHOLE OR IN PART WITHOUT PRIOR WRITTEN PERMISSION.		PDWG.NO: 0076-1		DR. SGF 23/05'02		深圳市步步精科技有限公司 NAME: DC座 DC-0.65针 全铜 沉板0.85 两脚插 三脚贴 (DCJR0001-F04G1BR-A) PJ. NO.: DC.03.12-12-B001 SIZE: A4 DRW NO.: FINISH: SEE NOTES MAT'L.: SEE NOTES SCALE: N/A REV.: A3 UNIT: mm PAGE: 1/1	
.X: ±0.38	.XX: ±0.25	.XXX: ±0.13	X': ±3"	.X': ±2"	.XX': ±1"		