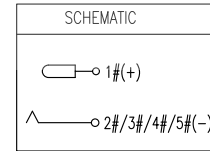
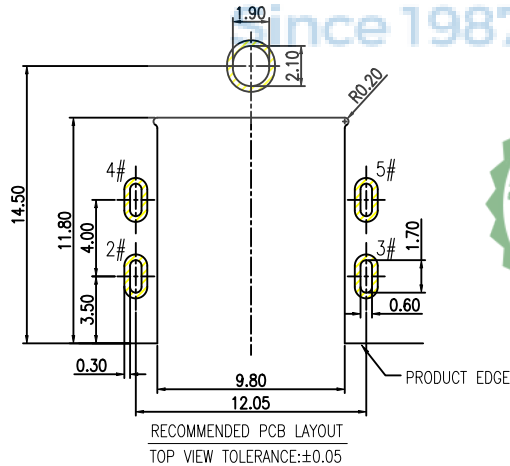
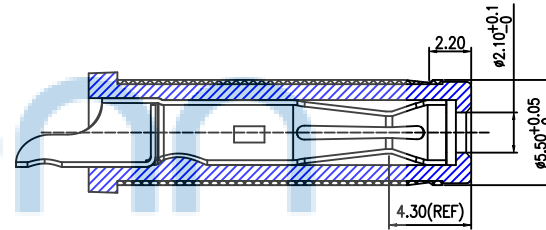
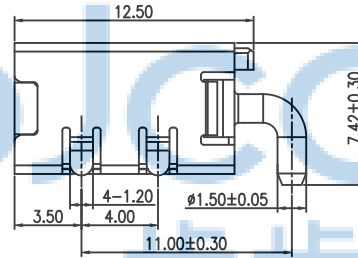
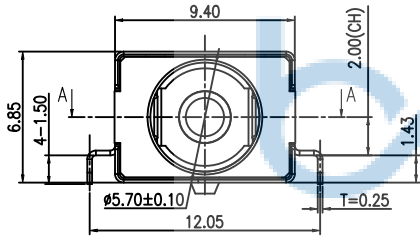
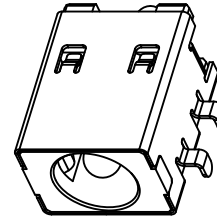
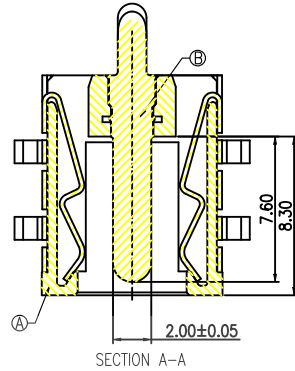
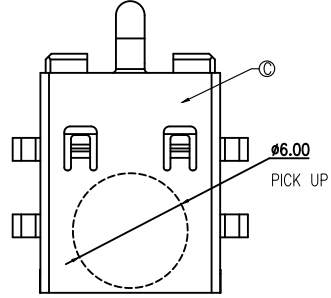


REV.	ECN NO	CONTENT	DATE	ENGINEER
AO			2023 20/04	

- SPECIFICATION:
- RATING: DC 30V 15A
 - CONTACT RESISTANCE:
30m? MAX(INITIAL).
50m? MAX(FINAL).
 - INSULATION RESISTANCE: 100 M? MIN.
 - WITHSTAND VOLTAGE: 500 VAC
 - INSERTION FORCE: 30N MAX.
 - EXTRACTION FORCE: 3N MIN.
 - DURABILITY: 5,000 CYCLES



NO.	DESCRIPTION	MATERIAL	REMARKS	QTY
C	SHELL	C5210	Ni 40u" MIN.	1
B	CENTER PIN	BRASS	GOLD FLASH / Ni 40u" MIN.	1
A	HOUSING	PA10T	BLACK	1

THIS DOCUMENT IS THE SOLE PROPERTY OF BBJconn Technology Co., Ltd. Corporation AND SHOULD NOT BE USED IN WHOLE OR IN PART WITHOUT PRIOR WRITTEN PERMISSION.

PDWG.NO: 0386-2

DR. SGF 23/05'02

APPD. JM_Zheng 23/05'02

CHKD. LYX 23/05'02

深圳市步步精科技有限公司

NAME: DC座 DC-2.0针 全铜 卧式 四脚插 (DC550200-1156-20000H)

PJ. NO.: DC.02.62-12-G005

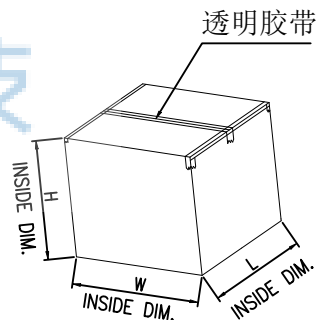
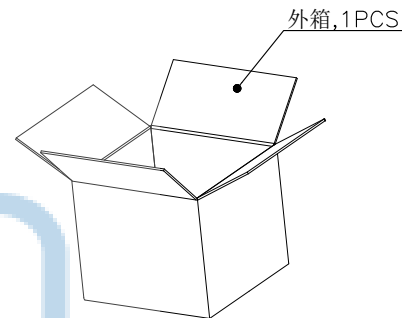
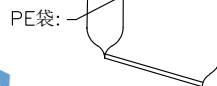
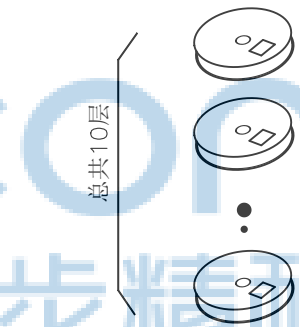
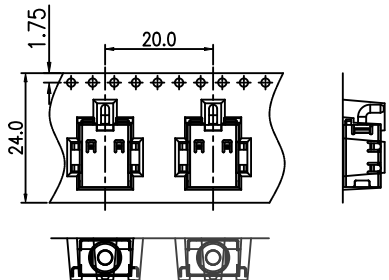
SIZE: A4 DRW NO.:

FINISH: SEE NOTES MAT'L.: SEE NOTES

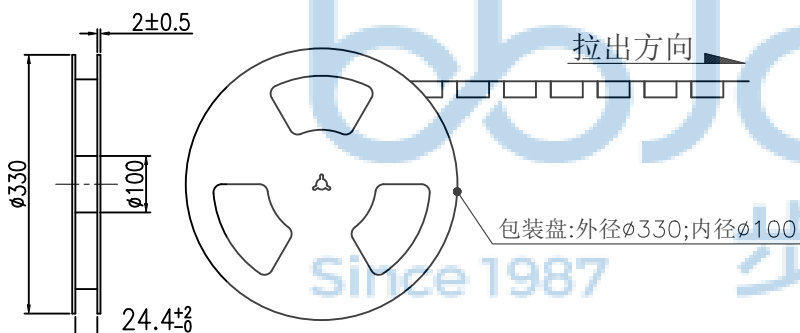
SCALE: N/A REV.: A3 UNIT: mm PAGE: 1/1

REV.	ECN NO.	CONTENT	DATE	ENGINEER
AO			2023 20/04	

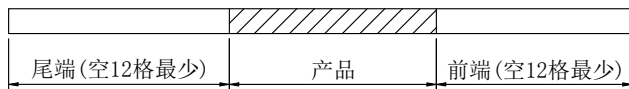
拉出方向



拉出方向



拉出方向



备注:

- 材料规格:
 - 1.1 载带: T=0.50mm
 - 1.2 包装盘: 蓝色
 - 1.3 纸箱: L=335, W=335, H=300
- 包装数量: 400PCS/卷, 10卷(4000PCS)/箱
- 上盖带剥离力: 0.1N~0.7N(10~70gf); 剥离角度: 165°~180°; 剥离速度: 300mm/分钟。



THIS DOCUMENT IS THE SOLE PROPERTY OF BBJconn Technology Co., Ltd. Corporation AND SHOULD NOT BE USED IN WHOLE OR IN PART WITHOUT PRIOR WRITTEN PERMISSION.		PDWG.NO: 0386-2		DR. SGF 23/05'02		深圳市步步精科技有限公司 NAME: DC座 DC-2.0针 全铜 卧式 四脚插 (DC550200-1156-20000H) APPD. JM_Zheng 23/05'02 CHKD. LYX 23/05'02 FINISH: SEE NOTES MAT'L.: SEE NOTES SCALE: N/A REV.: A3 UNIT: mm PAGE: 1/1	
.X: ±0.38 .X': ±3° .XX: ±0.25 .X'': ±2° .XXX: ±0.13 .X'X': ±1°		P.J. NO.: DC.02.62-12-G005		SIZE: A4 DRW NO.:			