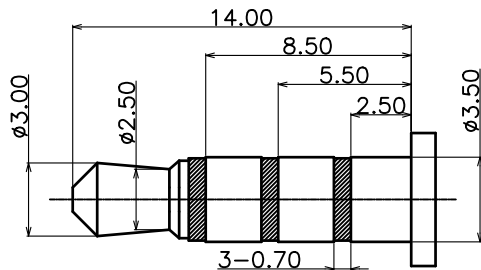
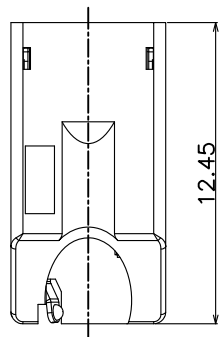
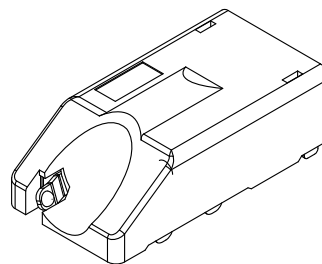


REV.	ECN NO.	CONTENT	DATE	ENGINEER
A0			2023 20/04	

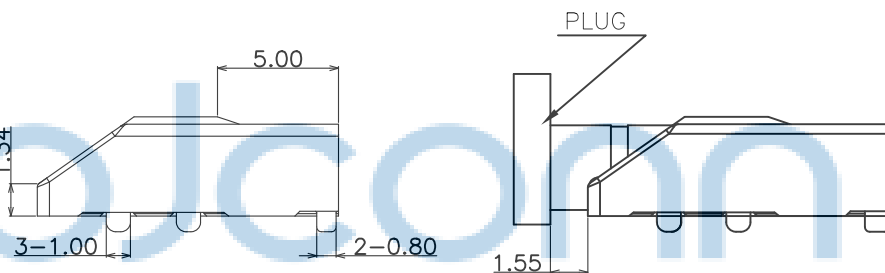
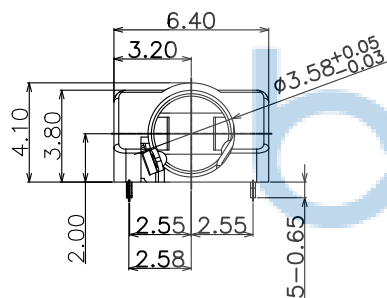


( $\phi 3.50\text{mm}$  4 POLE PLUG DETAIL DRAWING)

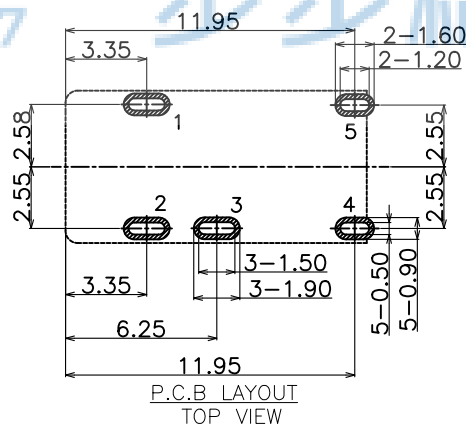
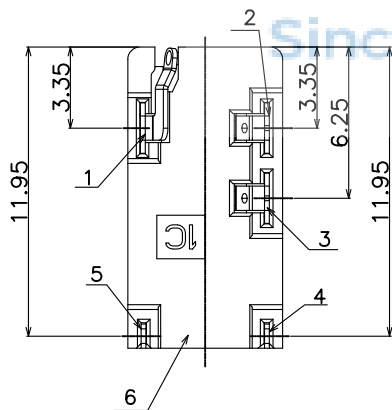


3D VIEW

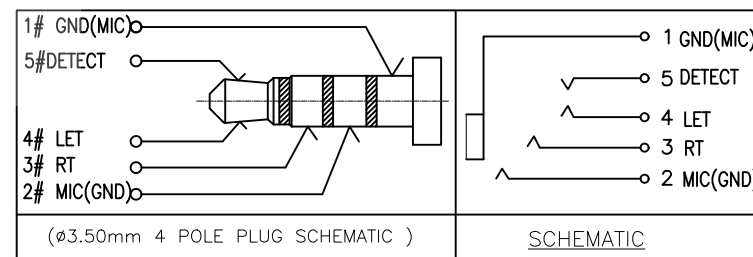
- CONTACT CURRENT RATING: 1A.
- CONTACT RESISTANCE: 50 m $\Omega$  MAX. ;
- INSULATION RESISTANCE: 100M $\Omega$  MIN. ;
- DIELECTRIC WITHSTANDING: 500V AC MIN. ;
- DURABILITY: 5,000 CYCLES MIN. ;
- CONNECTOR MATING FORCES: 30N MAX. ;
- CONNECTOR UNMATING FORCES: 3N MIN. ;



PLUG MATE DRAWING



P.C.B. LAYOUT  
TOP VIEW



ITEM	NAME	Q'TY	DESCRIPTION	NOTE
6	HOUSING	1	HIGHT TEMPERATURE PLASTIC; COLOR BLACK	
5	TERMINAL 5#	1	STAINLESS STEEL; NICKEL UNDER PLATING OVERALL, GOLD PLATING ON SOLDER AREA; GOLD PLATING ON CONTACT AREA	T=0.20mm
4	TERMINAL 4#	1	STAINLESS STEEL; NICKEL UNDER PLATING OVERALL, GOLD PLATING ON SOLDER AREA; GOLD PLATING ON CONTACT AREA	T=0.20mm
3	TERMINAL 3#	1	COPPER ALLOY; NICKEL UNDER PLATING OVERALL, GOLD PLATING ON SOLDER AREA; GOLD PLATING ON CONTACT AREA	T=0.20mm
2	TERMINAL 2#	1	COPPER ALLOY; NICKEL UNDER PLATING OVERALL, GOLD PLATING ON SOLDER AREA; GOLD PLATING ON CONTACT AREA	T=0.20mm
1	TERMINAL 1#	1	COPPER ALLOY; NICKEL UNDER PLATING OVERALL, GOLD PLATING ON SOLDER AREA; GOLD PLATING ON CONTACT AREA	T=0.20mm

THIS DOCUMENT IS THE SOLE PROPERTY OF **BBJconn Technology Co.,Ltd.**  
Corporation AND SHOULD NOT BE USED IN WHOLE OR IN PART WITHOUT PRIOR WRITTEN PERMISSION.

**深圳市步步精科技有限公司**

.X:  $\pm 0.38$  .XX:  $\pm 0.25$  .XXX:  $\pm 0.13$  X':  $\pm 3'$  X'':  $\pm 2'$  X''':  $\pm 1'$

NAME: 3.5耳机座 斜口 五脚插 四节 (PJ35A016-F05G1BR-A)

APPD. JM\_Zheng 23/05/02

CHKD. LYX 23/05/02

DR. SGF 23/05/02

PDWG.NO: 0076-1

PJ. NO.: PJ.03.22-01-3003

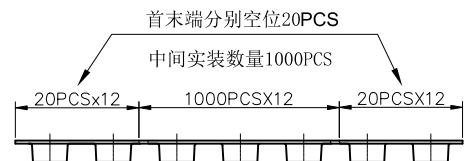
SIZE: A4 | DRW NO.:

FINISH: SEE NOTES | MAT'L.: SEE NOTES

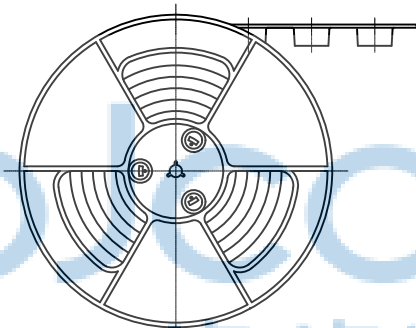
SCALE: N/A | REV.: A0 | UNIT: mm | PAGE: 1/1

1载带=1000PCS

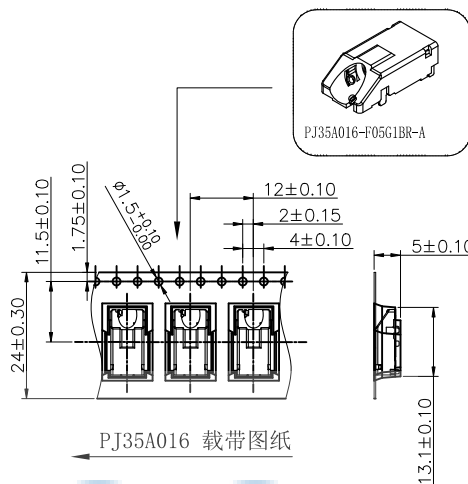
1外箱=1000PCSX10盘载带=10000PCS



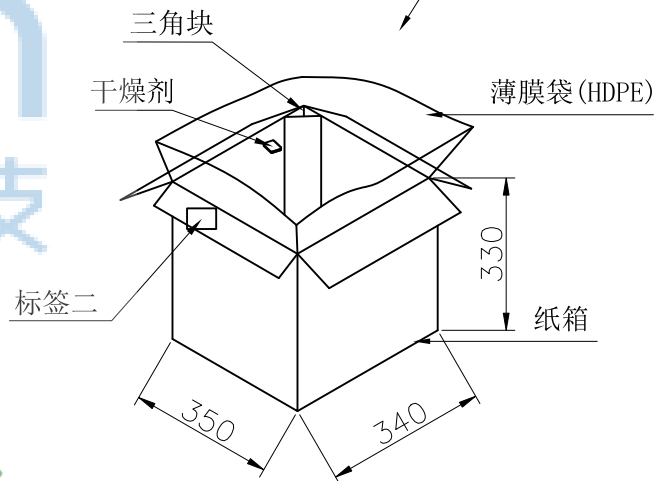
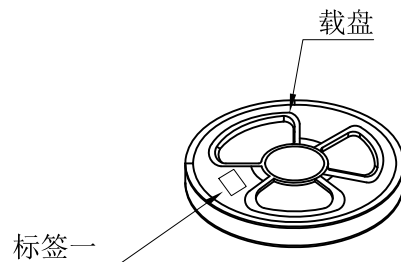
载带引出方向  
\* 载带包装时请依此引出方向为标准



卷盘包装示意



PJ35A016 载带图纸



包材名称	材料及厚度 (mm)	规格 (mm)
PJ35A040 载带	P. S (白色透明) T=0.30	12500X24.00X5.00
载盘	HI P. S (蓝色)	∅330X28.40
自粘带	PET (白色透明)	W=21.30 T=0.06
PE-375X450X0.06-A	PE (白色透明)	770X750X0.035
三角块	A=A+	260X300
ZK-400X400X330-A	K=K t=4	350X340X330

备注:

1. 每外箱内必须放干燥剂;
2. 每箱载盘必须用PE带密封包装;
3. 参考《高温材料管理规定》进行作业;
4. 我司标准格式标签或标签按客户要求制作;



THIS DOCUMENT IS THE SOLE PROPERTY OF BBJconn Technology Co., Ltd. Corporation AND SHOULD NOT BE USED IN WHOLE OR IN PART WITHOUT PRIOR WRITTEN PERMISSION.		<b>深圳市步步精科技有限公司</b>	
PDWG.NO: 0076-1		.X: ±0.38 .XX: ±0.25 .XXX: ±0.13 X': ±3' X'': ±2' X''': ±1'	NAME: 3.5耳机座 斜口 五脚插 四节 (PJ35A016-F05G1BR-A) PJ. NO.: PJ.03.22-01-3003 SIZE: A4   DRW NO.: FINISH: SEE NOTES   MAT'L.: SEE NOTES SCALE: N/A   REV.: A0   UNIT: mm   PAGE: 1/1
APPD.	JM_Zheng	23/05/02	
CHKD.	LYX	23/05/02	
DR.	SGF	23/05/02	