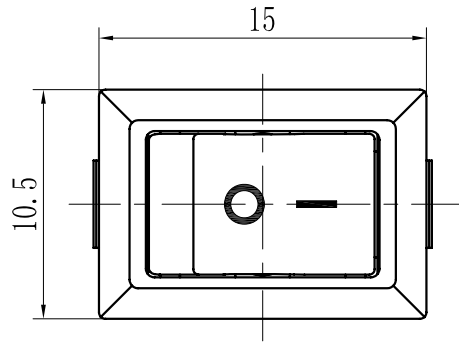
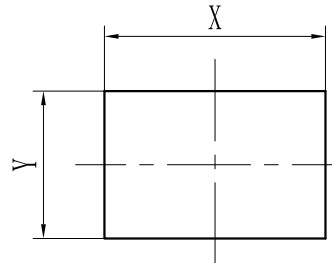


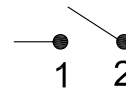
REV.	ECN NO	CONTENT	DATE	ENGINEER
A0		Initial release	/	SGF



PANEL CUT-OUT

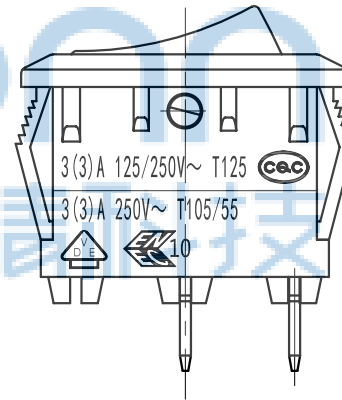
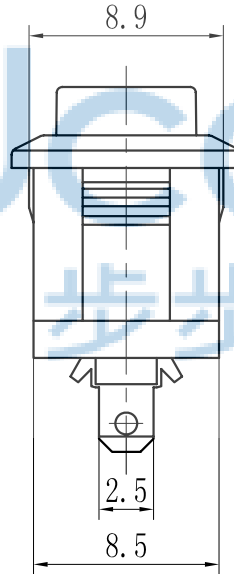
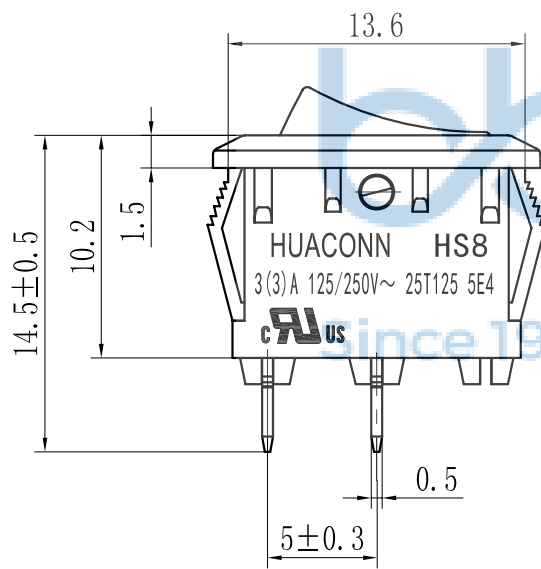


SWITCHING CIRCUIT



**Technical requirements:**

- Rating :  
CQC, UL: 3(3) A 125/250V~  
VDE, ENEC: 3(3) A 250V~
- Operating force: 500±300gf
- Contact resistance: ≤50mΩ
- Electrical life: ≥10000 cycles
- Withstand Voltage :Between all terminals:  
1500VAC (50-60Hz) 5s  
Terminals to Button:  
3000V AC (50-60Hz) 5s  
Leakage Current : 5mA
- Insulation Resistance : ≥100MΩ 500V DC
- Environmental temperature: : -25~+125°C



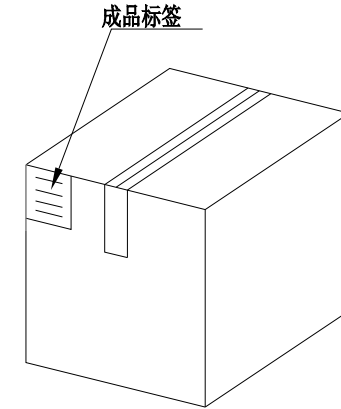
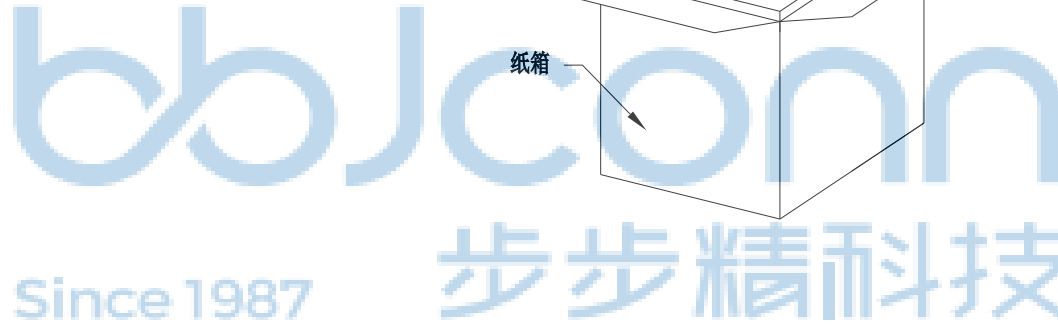
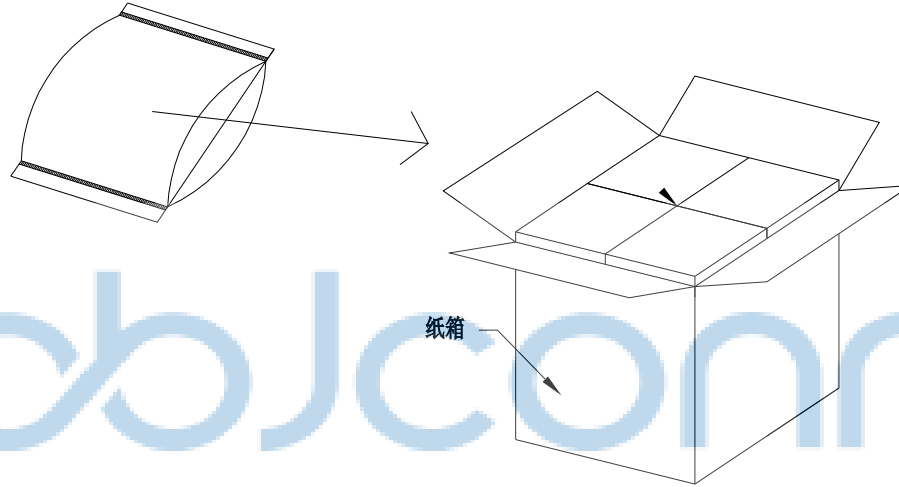
PANEL THICKNESS	DIM.X	DIM.Y
0.75~1.25	13.5~13.7	9.0
1.25~2.0	13.8~14.0	9.0
2.0~3.0	14.1~14.3	9.0



THIS DOCUMENT IS THE SOLE PROPERTY OF BBJconn Technology Co.,Ltd. Corporation AND SHOULD NOT BE USED IN WHOLE OR IN PART WITHOUT PRIOR WRITTEN PERMISSION.		深圳市步步精科技有限公司	
PDWG.NO: 0004-1		NAME: 船型开关 HS8-F9-5-01H300-BB03 两脚直插	
APPD. JM_Zheng	CHKD. LYX	PJ. NO.: RS.07.11-21-2002	
DR. SGF		SIZE: A4 DRW NO.:	
		FINISH: SEE NOTES	MAT'L.: SEE NOTES
		SCALE: N/A	REV.: A0 UNIT: mm PAGE: 1/2

REV.	ECN NO	CONTENT	DATE	ENGINEER
A0		Initial release	/	SGF

PE袋规格:\*\*\*X\*\*\* (以实际出货为准)



1. 包装要求:

- 1.1 每PE袋包装 500 pcs;
- 1.2 每1袋放一小纸盒;
- 1.3 每20个小纸盒放一个纸箱, 共计10000PCS
- 1.4 纸箱外贴上标签



THIS DOCUMENT IS THE SOLE PROPERTY OF BBJconn Technology Co.,Ltd. Corporation AND SHOULD NOT BE USED IN WHOLE OR IN PART WITHOUT PRIOR WRITTEN PERMISSION.		<b>深圳市步步精科技有限公司</b> .X: ±0.38    .X': ±3" .XX: ±0.25    .X": ±2" .XXX: ±0.13    .X": ±1"		NAME: 船型开关 HS8-F9-5-01H300-BB03 两脚直插	
APPD.	JM_Zheng	PJ. NO.: RS.07.11-21-2002 SIZE: A4   DRW NO.:		FINISH: SEE NOTES   MAT'L.: SEE NOTES	
CHKD.	LYX	SCALE: N/A		REV.: A0	UNIT: mm
PDWG.NO:	0004-1	DR.	SGF	PAGE: 2/2	