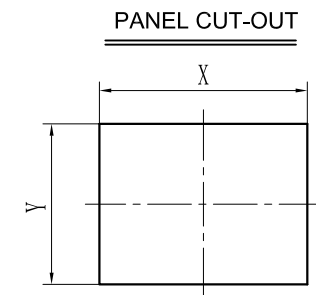
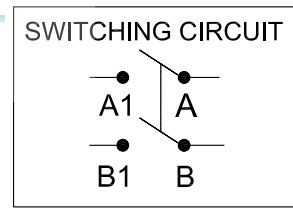
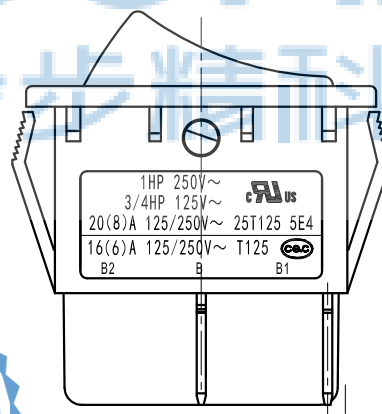
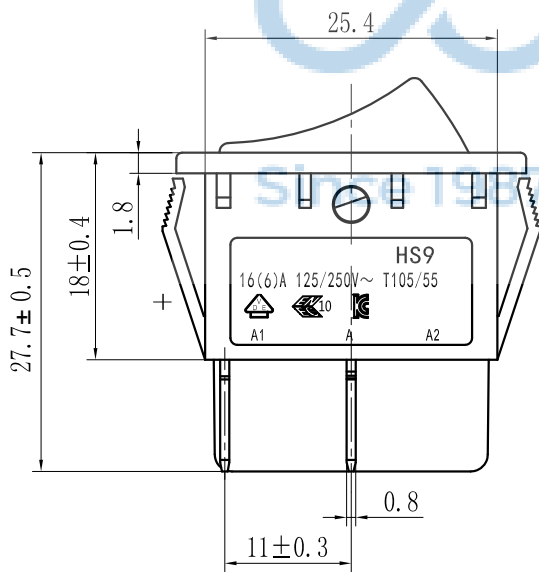
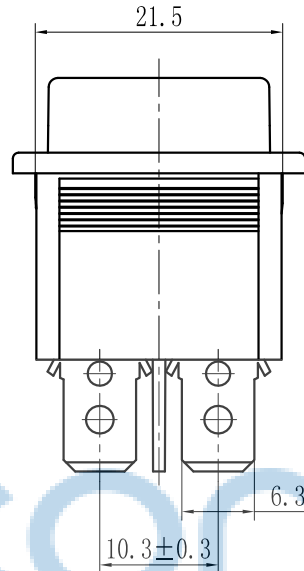
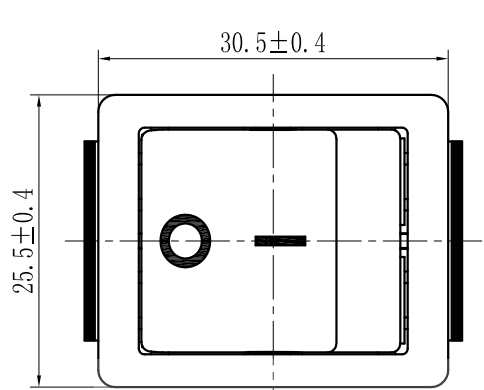


REV.	ECN NO	CONTENT	DATE	ENGINEER
A0		Initial release	/	SGF

Technical requirements:

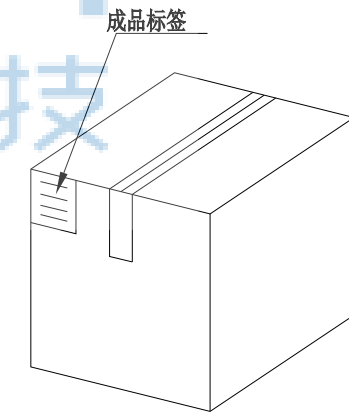
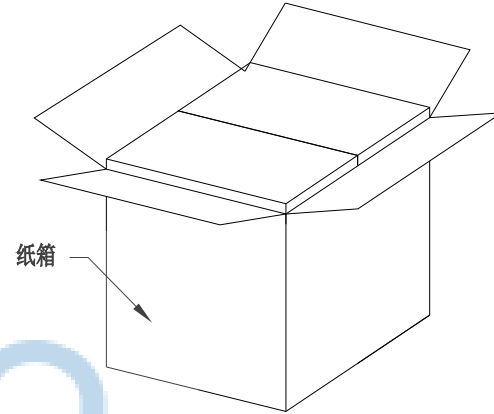
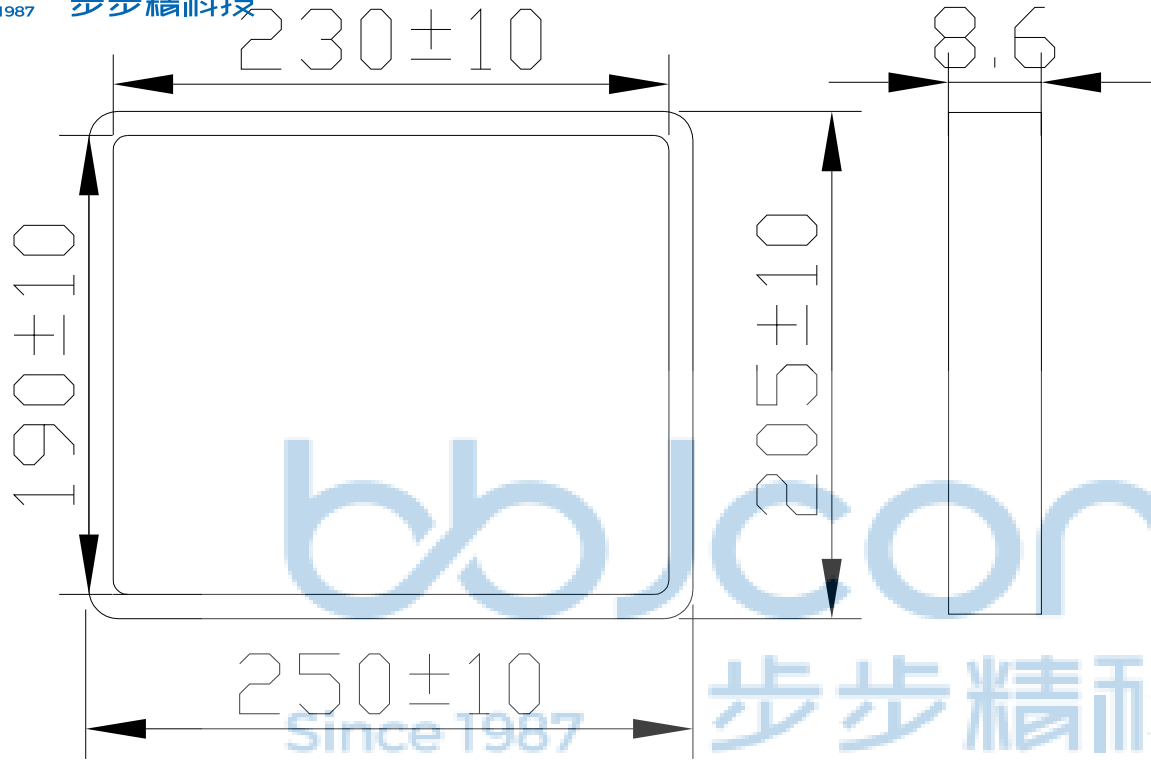
- Rating :
CQC : 16(6) A 125/250V~
/DE,ENEC,KC: 16(6) A 250V~
UL , cUL : 20(8) A 125/250V~
1HP 250V~
3/4HP 125V~
- Operating force: 800±400gf
- Contact resistance: ≤50mΩ
- Electrical life: ≥10000 cycles
- Withstand Voltage :Between all terminals:
1500VAC (50-60Hz)1min
Terminals to Button:
3000V AC (50-60Hz)1min
Leakage Current : 20mA
- Insulation Resistance : ≥100MΩ 500V DC
- Environmental temperature: : -25~+125°C



PANEL THICKNESS	DIM.X	DIM.Y
0.75~1.25	27.5~27.6	21.6
1.25~2.0	27.7~27.9	21.6
2.0~3.0	28.0~28.2	21.6

THIS DOCUMENT IS THE SOLE PROPERTY OF BBJconn Technology Co.,Ltd. Corporation AND SHOULD NOT BE USED IN WHOLE OR IN PART WITHOUT PRIOR WRITTEN PERMISSION.		深圳市步步精科技有限公司 .X: ±0.38 .X': ±3' .XX: ±0.25 .X'': ±2' .XXX: ±0.13 .X''': ±1'	
APPD.	JM_Zheng	NAME: 船型开关 HS9-E1-04Q200-BB03 四脚直插	
CHKD.	LYX	PJ. NO.: RS.17.11-22-2006	
DR.	SGF	SIZE: A4 DRW NO.:	
PDWG.NO:	0004-1	FINISH: SEE NOTES MAT'L.: SEE NOTES	
		SCALE: N/A REV.: A0 UNIT: mm PAGE: 1/2	

REV.	ECN NO	CONTENT	DATE	ENGINEER
A0		Initial release	/	SGF



纸箱规格: 350*210*290

1. 包装要求:
- 1.1 每盒吸塑盒包装 50 pcs;
 - 1.2 每20盘放一箱, 共计 100 PCS;
 - 1.3 纸箱外贴上标签



THIS DOCUMENT IS THE SOLE PROPERTY OF BBJconn Technology Co.,Ltd. Corporation AND SHOULD NOT BE USED IN WHOLE OR IN PART WITHOUT PRIOR WRITTEN PERMISSION.		深圳市步步精科技有限公司 工程管理部 APPROVED		深圳市步步精科技有限公司 NAME: 船型开关 HS9-E1-04Q200-BB03 四脚直插 PJ. NO.: RS.17.11-22-2006 SIZE: A4 DRW NO.: FINISH: SEE NOTES MAT'L.: SEE NOTES SCALE: N/A REV.: A0 UNIT: mm PAGE: 2/2	
PX: ±0.38	PX': ±3"	APPD.	JM_Zheng		
PXX: ±0.25	PXX': ±2"	CHKD.	LYX		
PXXX: ±0.13	PXXX': ±1"	DR.	SGF		
PDWG.NO: 0004-1					