

REV.	ECN NO	CONTENT	DATE	ENGINEER
A0		Initial release	/	TSP

NOTES:

1. MATERIAL:

MOLDING: LCP UL94 V-0

CONTACT: COPPER ALLOY C7025

GOLD PLATING 30u" ALL OVER 50u" Min NICKEL
AND 100u" Min Tin ALL OVER 50u" Min NICKEL
ON SOLDER AREA

SHELL: SUS304-H, T=0.30±0.03mm

50u" NICKEL PLATING OVER ALL.

2. MECHANICAL:

INSERTION: 5~20N.

EXTRACTION: 8~20N AFTER TEST .

DURABILITY: 10000 CYCLES

3. ELECTRICAL:

CURRENT: 5A FOR VBUS;
1.25A FOR GND PIN.

0.25A FOR OTHER.

VOLTAGE: 20 V MAX

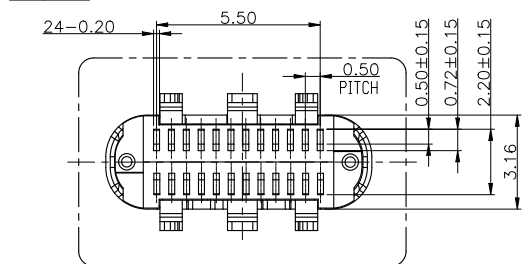
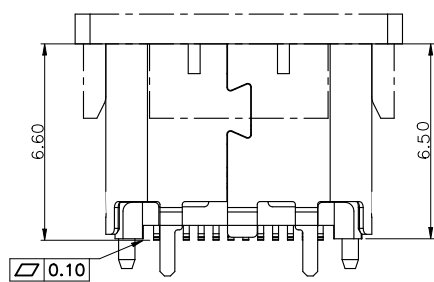
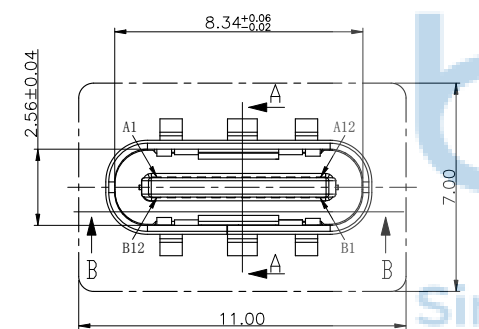
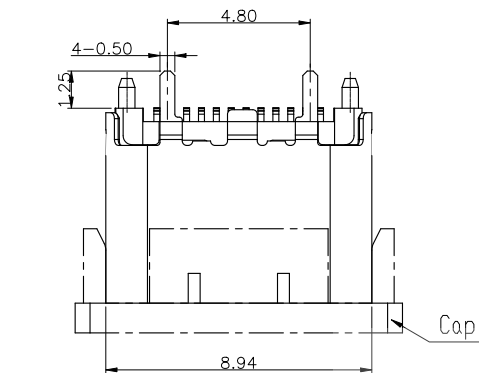
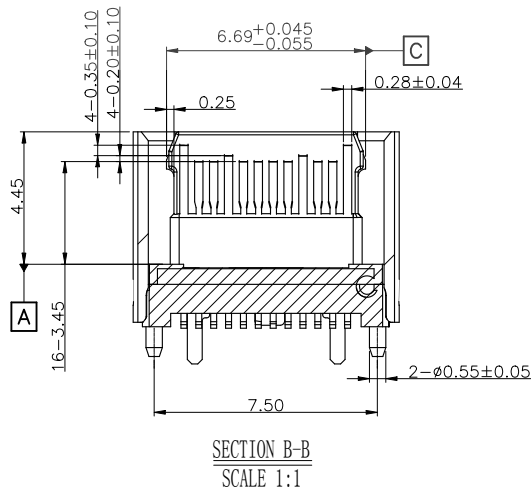
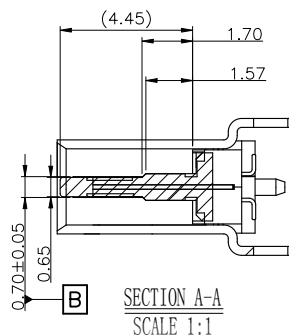
WITHSTANDING VOLTAGE: 100V AC R. M. S

CONTACT RESISTANCE: 40mΩ MAX.

INSULATION RESISTANCE: 100MΩ MIN.

4. ENVIRONMENTAL

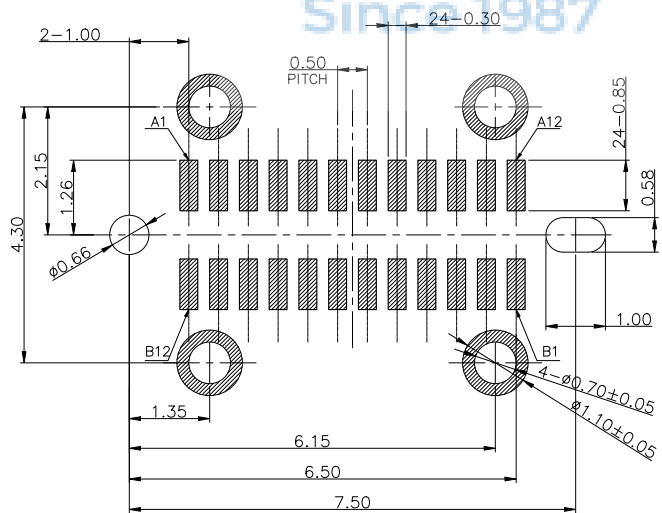
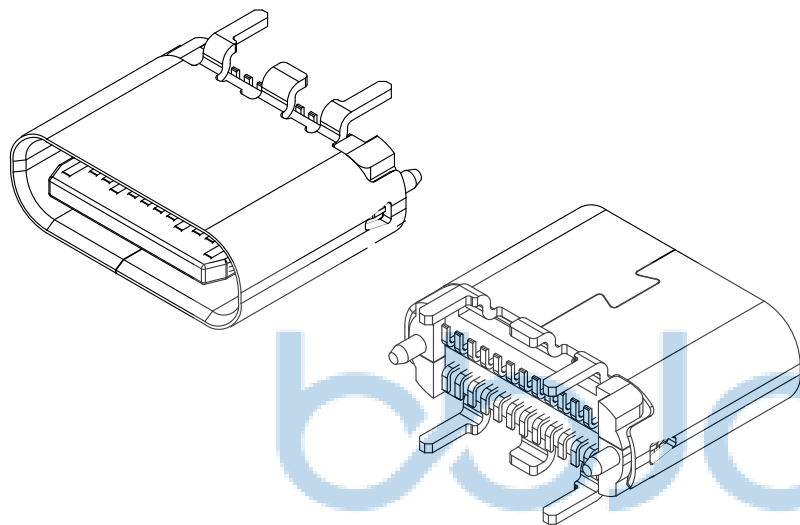
TEMPERATURE RANGE -55° C ~ +85° C



THIS DOCUMENT IS THE SOLE PROPERTY OF BBJconn Technology Co.,Ltd. Corporation AND SHOULD NOT BE USED IN WHOLE OR IN PART WITHOUT PRIOR WRITTEN PERMISSION.		深圳市步步精科技有限公司 NAME: TYPE-C 24P 母座 直立式 SMT 镀金30U 四脚插 带柱 H=6.50 编带 APPD. JM_Zheng CHKD. LYX DR. TSP PDWG.NO: 0285-1	
.X: ±0.38 .XX: ±0.25 .XXX: ±0.13		X': ±3' X'': ±2' XX': ±1'	
PJ. NO.: 126-224-240001-J8G		SIZE: A4 DRW NO.:	
FINISH: SEE NOTES		MAT'L.: SEE NOTES	
SCALE: N/A		REV.: A0 UNIT: mm PAGE: 1/4	

USB TYPE-C 24PIN FULL-FEATURED
RECEPTACLE INTERFACE PIN ASSIGNMENTS

PIN	Signal Name	PIN	Signal Name
A1	GND	B12	GND
A2	SSTXp1	B11	SSRXp1
A3	SSTXn1	B10	SSRXn1
A4	VBUS	B9	VBUS
A5	CC1	B8	SBU2
A6	Dp1	B7	Dn2
A7	Dn1	B6	Dp2
A8	SBU1	B5	CC2
A9	VBUS	B4	VBUS
A10	SSRXn2	B3	SSTXn2
A11	SSRXp2	B2	SSTXp2
A12	GND	B1	GND



RECOMMENDED P.C.B. LAYOUT (T:1.00mm)
TOLERANCE UNSPECIFIED ±0.05mm
SCALE: 2:1

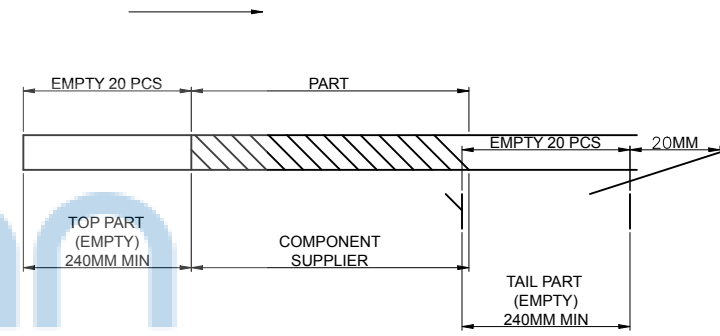
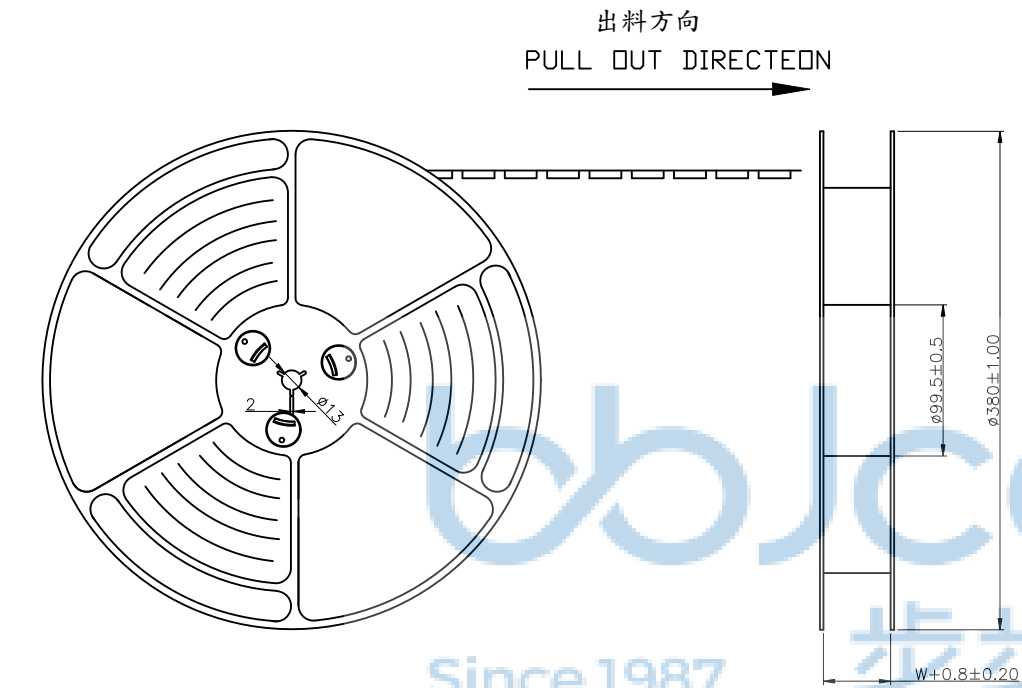


THIS DOCUMENT IS THE SOLE PROPERTY OF BBJconn Technology Co.,Ltd. Corporation AND SHOULD NOT BE USED IN WHOLE OR IN PART WITHOUT PRIOR WRITTEN PERMISSION.		 深圳市步步精科技有限公司	
.X: ±0.38 .XX: ±0.25 .XXX: ±0.13		X': ±3' .X': ±2' .X': ±1'	
APPD.	JM_Zheng	NAME: TYPE-C 24P 母座 直立式 SMT 镀金30U 四脚插 带柱 H=6.50 编带	
CHKD.	LYX	PJ. NO.: 126-224-240001-J8G	
DR.	TSP	SIZE: A4 DRW NO.:	
PDWG.NO:	0285-1	FINISH: SEE NOTES MAT'L.: SEE NOTES	
		SCALE: N/A REV.: A0 UNIT: mm PAGE: 2/4	

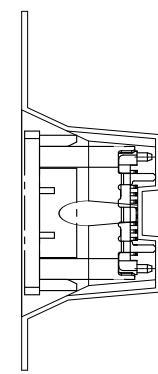
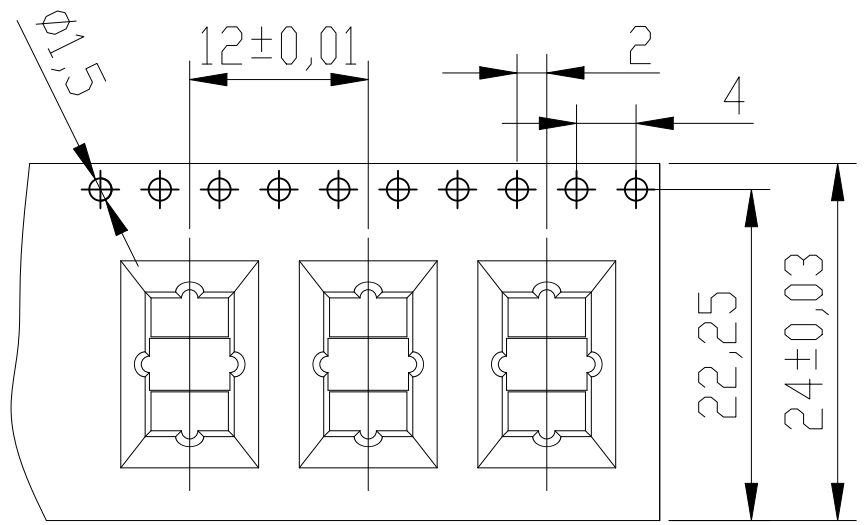
REV.	ECN NO	CONTENT	DATE	ENGINEER
A0		Initial release	/	TSP

NOTES

- 帶子引導長度
LEAD TAPE LENGTH
出料方向
PULL OUT DIRECTEON



- 出貨運輸過程中一定注意：
THIS REQUIREMENT SHOULD BE APPLIED AT SHIPMENT：
卷帶在運輸過程中不能散開
PEELING OFF SHOULD NOT BE ALLOWED DURING TRANSPORTATION

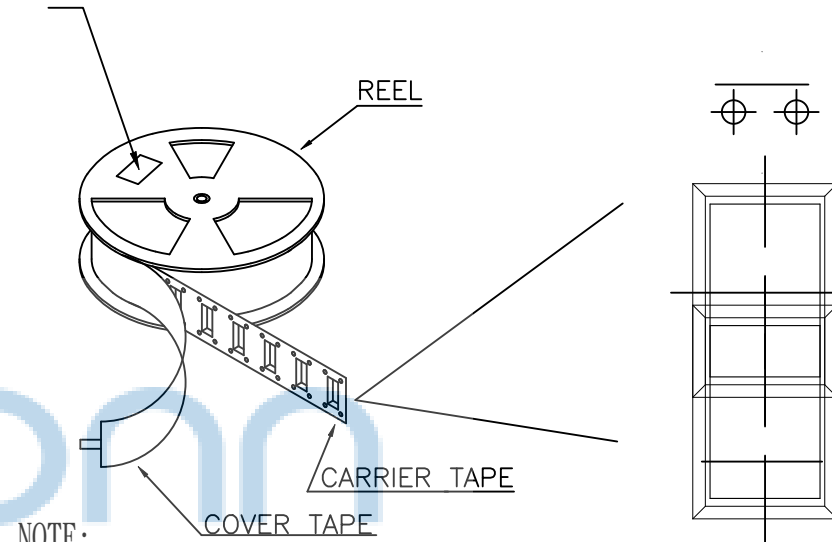
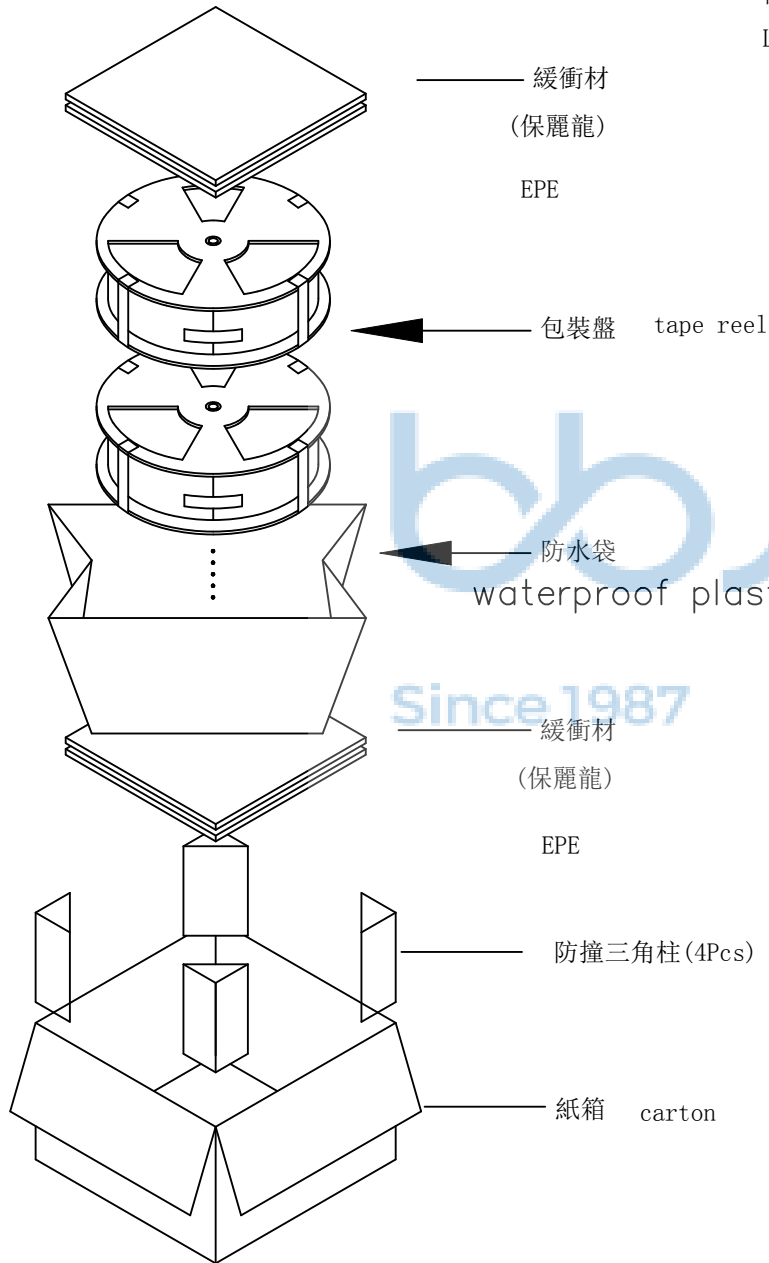


THIS DOCUMENT IS THE SOLE PROPERTY OF BBJconn Technology Co.,Ltd. Corporation AND SHOULD NOT BE USED IN WHOLE OR IN PART WITHOUT PRIOR WRITTEN PERMISSION.		深圳市步步精科技有限公司	
PDWG:NO: 0285-1	APPD. JM_Zheng	NAME: TYPE-C 24P 母座 直立式 SMT 鍍金30U 四脚插 帶柱 H=6.50 編帶	PJ. NO.: 126-224-240001-J8G
	CHKD. LYX	SIZE: A4	DRW NO.:
	DR. TSP	FINISH: SEE NOTES	MAT'L.: SEE NOTES
		SCALE: N/A	REV.: A0 UNIT: mm PAGE: 3/4

at small positioning hole of the carrier tape side).
標簽黏貼處 (朝捲裝包材的小定位孔一側)

Location of label sticking (label

REV.	ECN NO	CONTENT	DATE	ENGINEER
A0		Initial release	/	TSP



- NOTE:
1. 每捲包裝數量及每箱裝箱數量如左下表格。
Packing qty of each reel & carton as below table shown.
 2. 以上膠帶覆蓋下包裝帶經包裝機熱熔包裝
Use cover tape to cover and hot melt machine to seal up.
 3. 每個紙箱放2個珍珠棉
Every carton use 2pcs EPE.
 4. 將裝滿產品的卷盤放入紙箱并以膠帶封口
Put reels in the carton and use adhesive tape to seal up.



產品料號 (PRODUCT No.)	包裝容量 (PACKING CAPACITY)			重量 WEIGHT (Kg)		
	PCS/REEL	REELS/CARTON	PCS/CARTON	N.W./PCS	N.W./BOX	G.W./BOX
	800	8	6400			

THIS DOCUMENT IS THE SOLE PROPERTY OF BBJconn Technology Co.,Ltd. Corporation AND SHOULD NOT BE USED IN WHOLE OR IN PART WITHOUT PRIOR WRITTEN PERMISSION.		深圳市步步精科技有限公司 .X: ±0.38 .X': ±3" .XX: ±0.25 .X'': ±2" .XXX: ±0.13 .X''': ±1"		NAME: TYPE-C 24P 母座 直立式 SMT 鍍金30U 四腳插 帶柱 H=6.50 編帶	
APPD.	JM_Zheng	PJ. NO.: 126-224-240001-J8G			
CHKD.	LYX	SIZE: A4 DRW NO.:			
DR.	TSP	FINISH: SEE NOTES		MAT'L.: SEE NOTES	
PDWG.NO:	0285-1	SCALE: N/A	REV.: A0	UNIT: mm	PAGE: 4/4