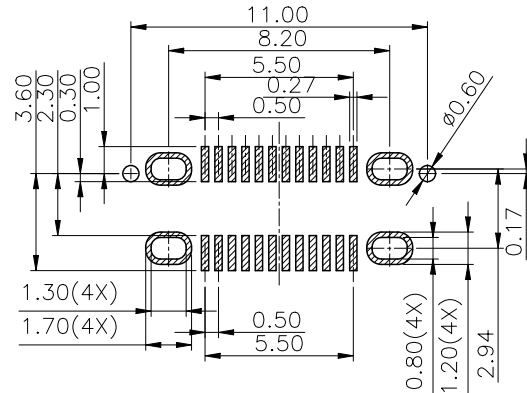
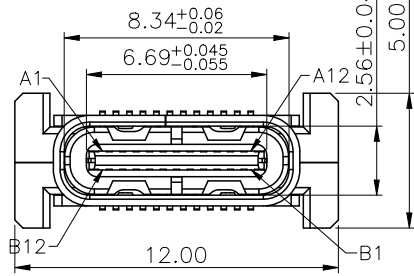
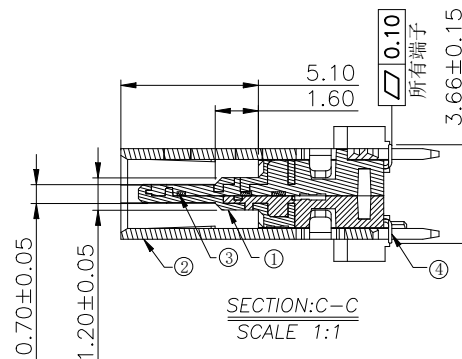
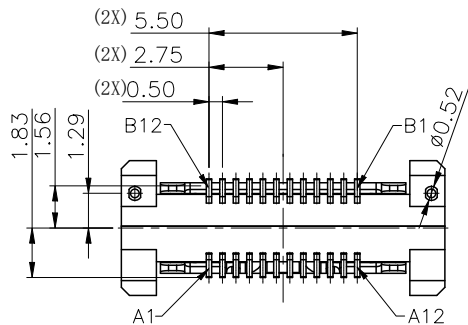
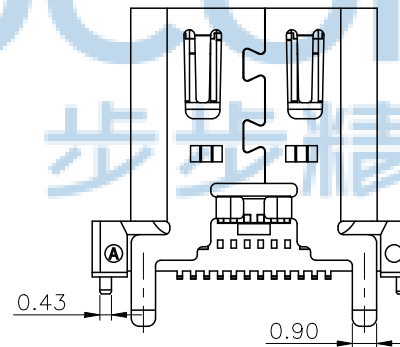
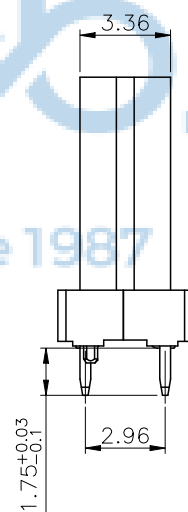
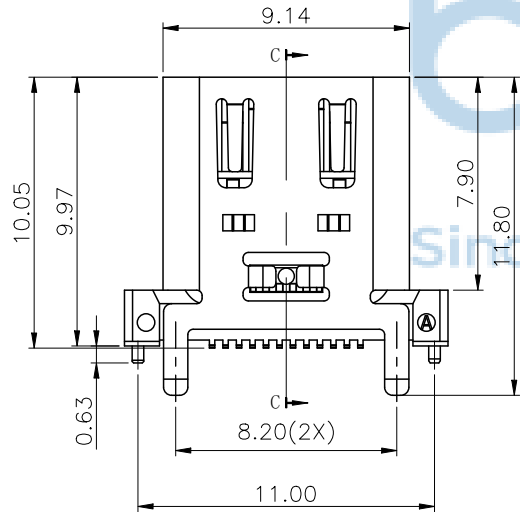


REV	ECN NO	CONTENT	DATE	ENGINEER
A0		INITIAL RELEASE	/	SGF



RECOMMENDED PCB LAYOUT(TOP VIEW)  
THICKNESS 1.0±0.10MM;DEFAULT TOLERANCE:±0.05

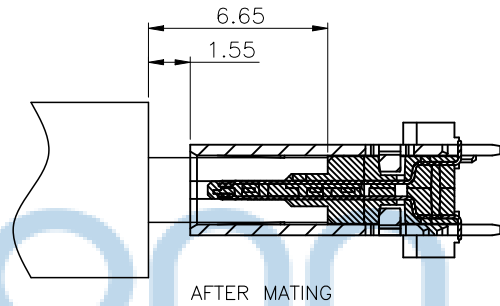
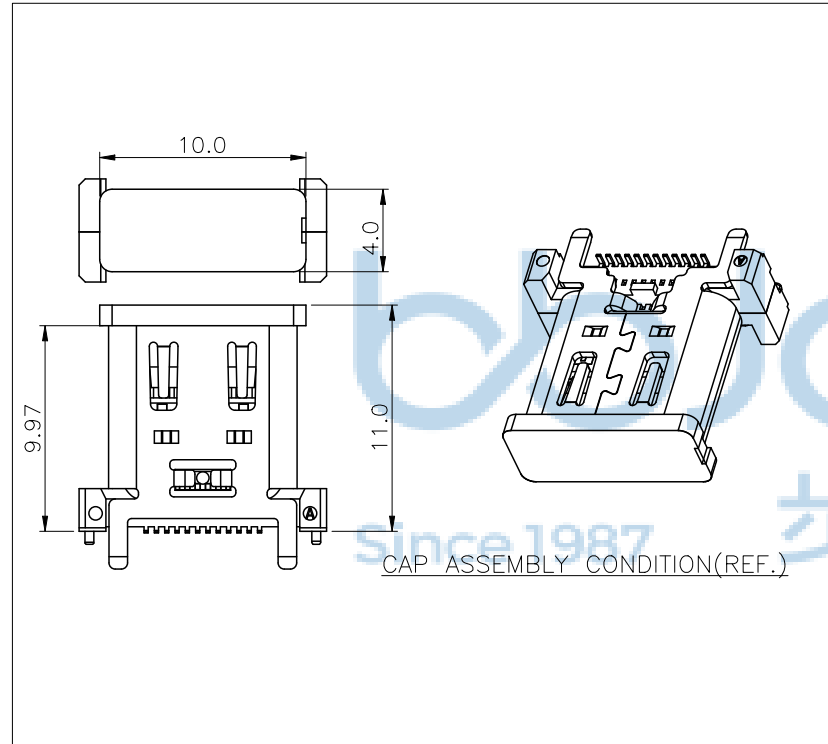


- NOTE:
- MATERIAL SPECIFICATION:
    - HOUSING:PA9T,UL94 V-0.
    - TERMINAL: COPPER ALLOY
    - MID PLATE: STAINLESS STEEL
    - FRONT SHELL: STAINLESS STEEL
  - PLATING SPECIFICATION:
    - TERMINAL:
      - Ni 50u" MIN. UNDER PLATED OVER ALL.
      - Au PLATED ON THE FUNCTIONAL AREA OF CONTACT.
    - SHELL:
      - Ni 30u" MIN. UNDER PLATED OVER ALL.
    - MID PLATE:
      - CLEAR ONLY
  - MECHANICAL PERFORMANCE,
    - INSERTION FORCE: 0.5~2.0kgf.
    - REMOVAL FORCE: 0.8kgf~2.0kgf.
    - DURABILITY: 10000 CYCLES.
  - ELECTRICAL PERFORMANCE,
    - VOLTAGE RATING:5 V DC/AC (RMS. max)  
CURRENT RATING:3A/5AMPS. FOR TOTAL VBUS/GND PINS;  
1.25AMPS FOR CC PIN,0.25 AMPS. FOR ALL OTHER CONTACT.
    - LLCR:
      - VBUS & GND PINS AND OTHER PINS: 40mΩ /PIN MAX.
      - SHIELD: 50mΩ /MAX.
      - LLCR MAX. CHANGE OF ALL PINS: 10mΩ .
    - INSULATION RESISTANCE: 100MΩ MIN
    - DIELECTRIC WITHSTAND VOLTAGE,AC 100V FOR 1 MINUTE.
  - ENVIRONMENTAL PERFORMANCE:
    - OPERATING TEMPERATURE: -25°C~+85°C.
  - IR REFLOW:
    - THE PEAK TEMPERATURE ON THE BOARD SHALL BE MAINTAINED FOR 10 SECONDS AT 260°C.



THIS DOCUMENT IS THE SOLE PROPERTY OF BBJconn Technology Co.,Ltd. Corporation AND SHOULD NOT BE USED IN WHOLE PRIOR WRITTEN PERMISSION.		深圳市步步精科技有限公司 .X: ±0.38 .XX: ±0.25 .XXX: ±0.13 X': ±3' .X': ±2' .XX': ±1'		NAME: TYPE-C 24P 母座 直立式 四脚插 端子SMT 外壳带弹 H=9.97 编带 PJ NO: 126-224-240012-J8G SIZE:A4 DRW NO:	
APPD	JM_Zheng	FINISH:SEE NOTES		MAT'L:SEE NOTES	
CHKD	LYX	SCALE:N/A	REV:A0	UNIT:mm	PAGE:1/3
PDWG NO: 0338-1	DR	SGF			

REV	ECN NO	CONTENT	DATE	ENGINEER
A0		INITIAL RELEASE	/	SGF



USB TYPE-C PIN ASSIGNMENTS

PIN NUMBER	SIGNAL NAME	PIN NUMBER	SIGNAL NAME
A1	GND	B12	GND
A2	SSTXp1	B11	SSRXp1
A3	SSTXn1	B10	SSRXn1
A4	Vbus	B9	Vbus
A5	CC1	B8	SBU2
A6	Dp1	B7	Dn2
A7	Dn1	B6	Dp2
A8	SBU1	B5	CC2
A9	Vbus	B4	Vbus
A10	SSRXn2	B3	SSTXn2
A11	SSRXp2	B2	SSTXp2
A12	GND	B1	GND



THIS DOCUMENT IS THE  
SOLE PROPERTY OF  
BBJconn Technology Co.,Ltd.  
Corporation AND SHOULD  
NOT BE USED IN WHOLE  
PRIOR WRITTEN PERMISSION.  
PDWG NO: 0338-1

**深圳市步步精科技有限公司**

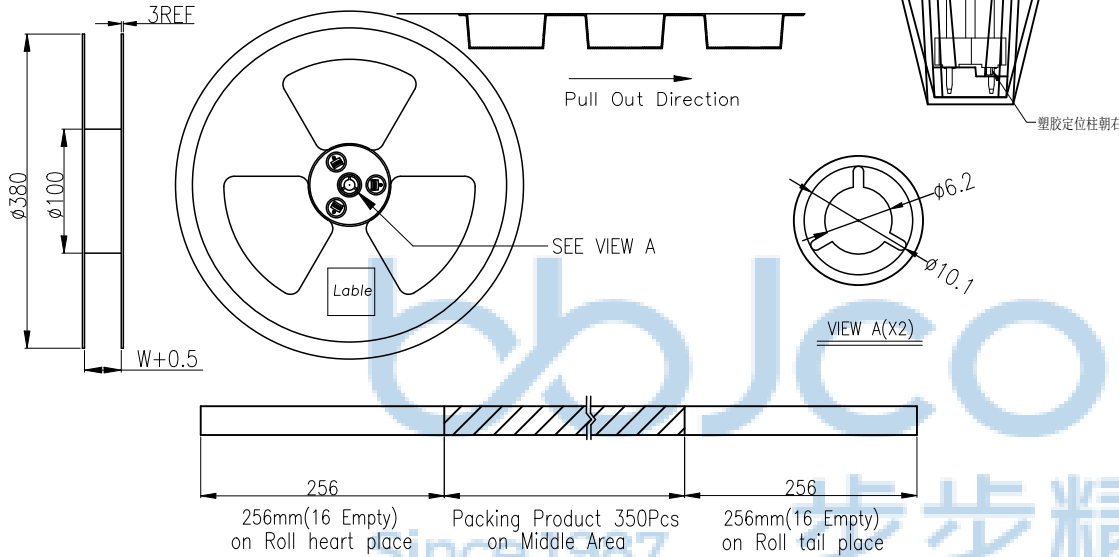
.X: ±0.38	X': ±3'
.XX: ±0.25	.X': ±2'
.XXX: ±0.13	.XX': ±1'
APPD	JM_Zheng
CHKD	LYX
DR	SGF

NAME: TYPE-C 24P 母座 直立式 四脚插 端子SMT 外壳带弹 H=9.97 编带	
PJ NO: 126-224-240012-J8G	SIZE:A4   DRW NO:
FINISH:SEE NOTES	MAT'L:SEE NOTES
SCALE:N/A	REV:A0   UNIT:mm   PAGE:2/3

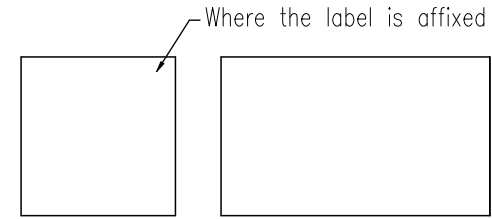
REV	ECN NO	CONTENT	DATE	ENGINEER
AO		INITIAL RELEASE	/	SGF

□ Packing Notes:

1. Reel : 400Pcs/Reel.
2. Carton : 3200Pcs/8 Reel/Carton.

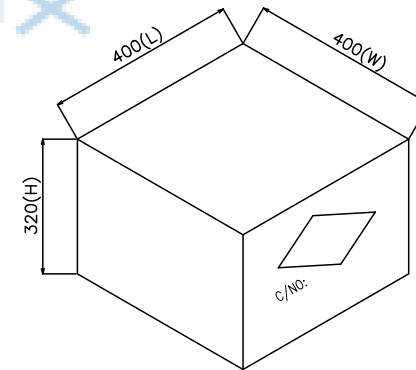
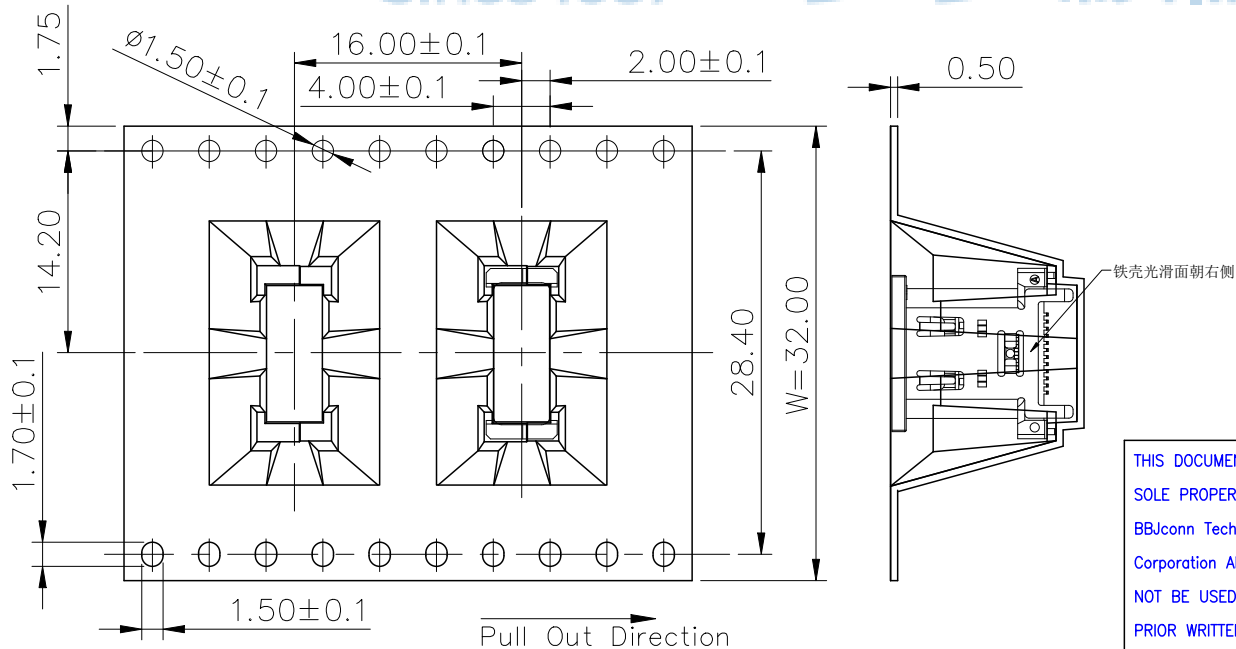


- 1) Seal the carton with TAPE.
- 2) Attach the label to the side of the carton



NOTES: (REMARK)

- 1). If there are any unfilled boxes, they must be filled with buffer material.
- 2). Handle with care during handling.
- 3). Do not pile up too much or have heavy pressure during transportation.
- 4). The upper belt must be smooth when pasting the lower belt, and no bubbles appear at the pasting place.



THIS DOCUMENT IS THE SOLE PROPERTY OF BBJconn Technology Co.,Ltd. Corporation AND SHOULD NOT BE USED IN WHOLE PRIOR WRITTEN PERMISSION.	深圳市步步精科技有限公司		NAME: TYPE-C 24P 母座 直立式 四脚插 端子SMT 外壳带弹 H=9.97 编带	
	APPD	JM_Zheng	PJ NO: 126-224-240012-J8G SIZE:A4 DRW NO:	FINISH:SEE NOTES SCALE:N/A REV:AO UNIT:mm PAGE:3/3
CHKD	LYX	DR		
PDWG NO: 0338-1	DR	SGF		