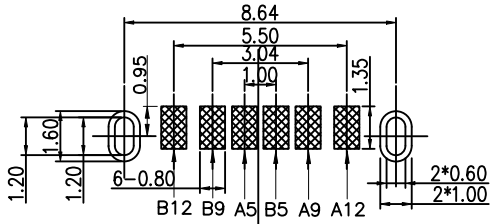
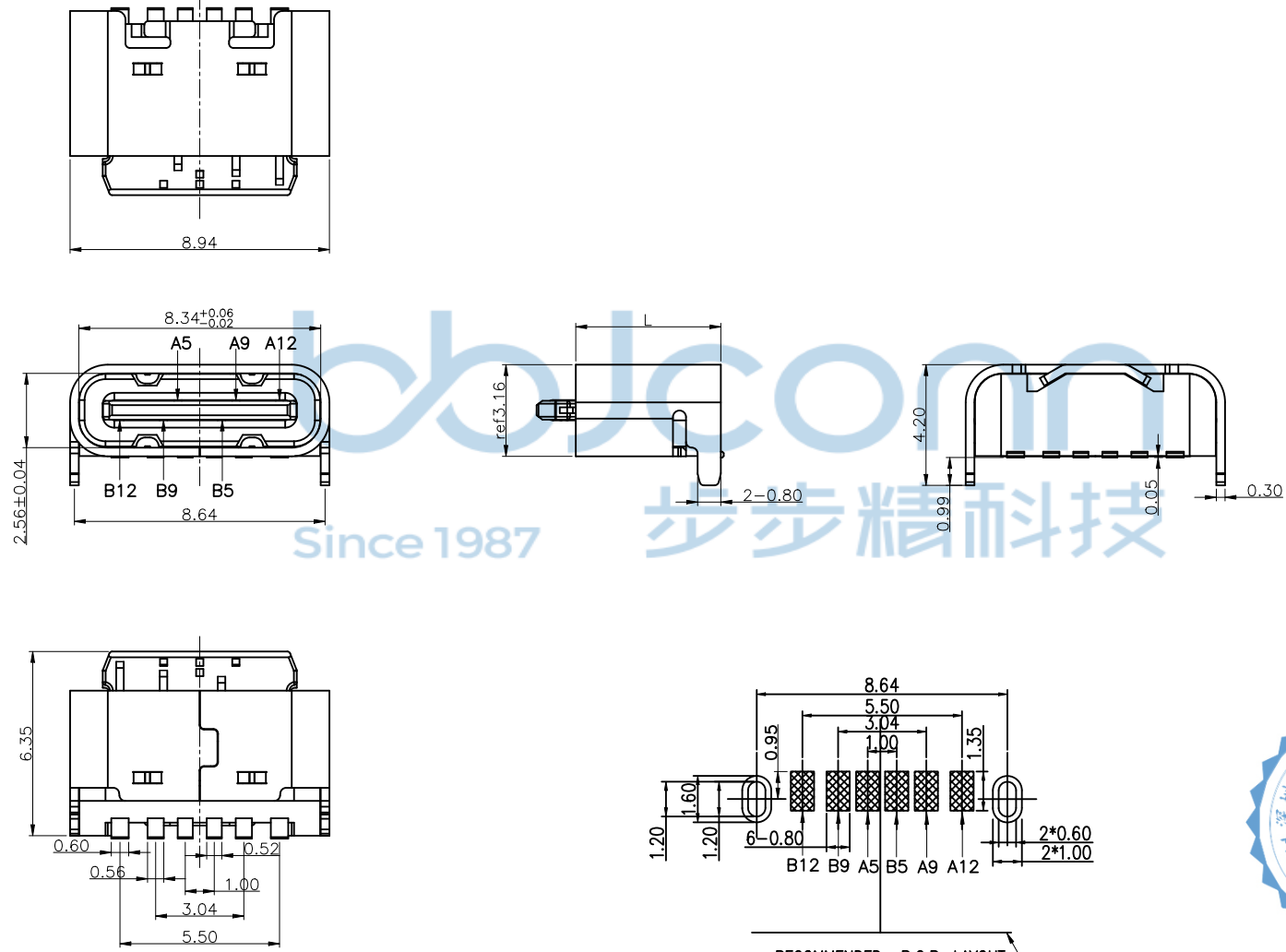


REV	ECN NO	CONTENT	DATE	ENGINEER
A0		INITIAL RELEASE	/	GZY

**NOTE:**

- MATERIAL SPECIFICATION:**
  - 1-1.HOUSING:HIGH TEMPERATURE RESISTANT PLASTIC,UL94 V-0.
  - 1-2.TERMINAL: COPPER ALLOY
  - 1-3.FRONT SHELL: STAINLESS STEEL
  - 1-4.MID PLATE: STAINLESS STEEL
- PLATING SPECIFICATION:**
  - 2-1.TERMINAL:  
Ni 30u" MIN. UNDER PLATED OVER ALL.  
Au PLATED Golden Flash OVER Ni
  - 2-2.FRONT SHELL:  
Ni 30u" MIN. PLATED OVER ALL.
- MECHANICAL PERFORMANCE,**
  - 3-1.INSERTION FORCE: 0.5~2.0kgf.
  - 3-2.REMOVAL FORCE: 0.6kgf~2.0kgf.
  - 3-3.DURABILITY: 10000 CYCLES.
- ELECTRICAL PERFORMANCE,**
  - 4-1. VOLTAGE RATING: 5.0V DC/AC
  - CURRENT RATING: 2.0A
  - 4-2. LLCR: 50mΩ/PIN MAX.
  - 4-3.INSULATION RESISTANCE: 100MΩ MIN
  - 4-4.DIELECTRIC WITHSTAND VOLTAGE,AC 100V FOR 1 MINUTE.
- ENVIRONMENTAL PERFORMANCE:**  
OPERATING TEMPERATURE: -25°C~+85°C.



RECOMMENDED P.C.B. LAYOUT  
TOLERANCE UNSPECIFIED ±0.05mm



L	L = 5.5	H	H = 1.0
L	L = 5.0	H	H = 0.6

**PIN ASSIGNMENTS**

A5	CC1	B12	GND
A9	VBUS	B9	VBUS
A12	GND	B5	CC2
PIN	SIGNAL NAME	PIN	SIGNAL NAME

THIS DOCUMENT IS THE SOLE PROPERTY OF BBJconn Technology Co.,Ltd. Corporation AND SHOULD NOT BE USED IN WHOLE PRIOR WRITTEN PERMISSION.

PDWG NO:0325-2

**深圳市步步精科技有限公司**

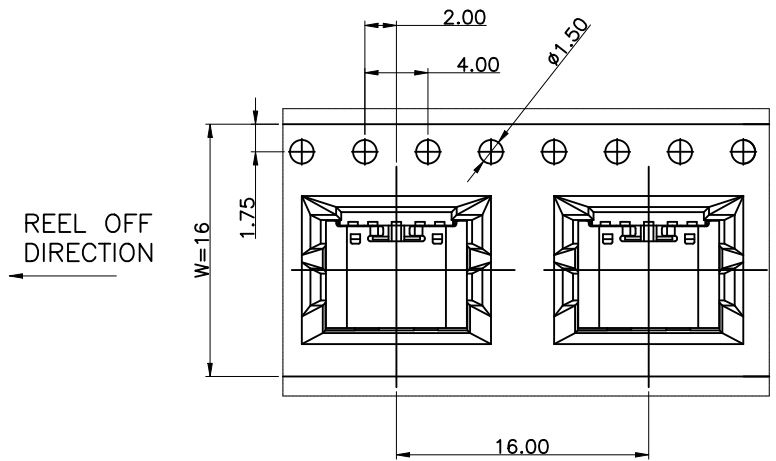
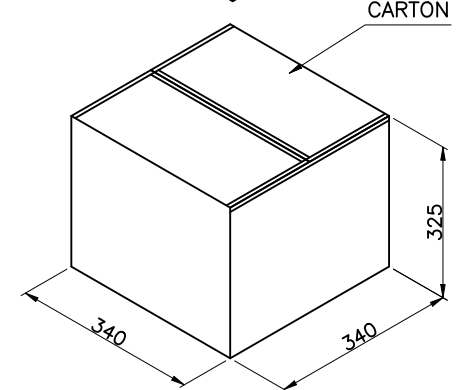
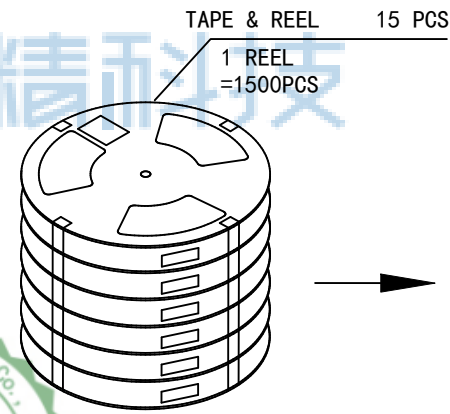
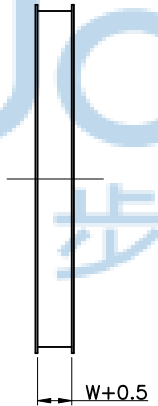
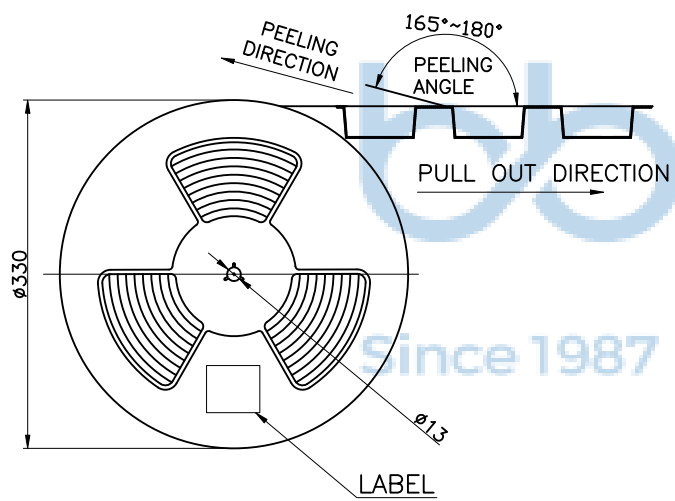
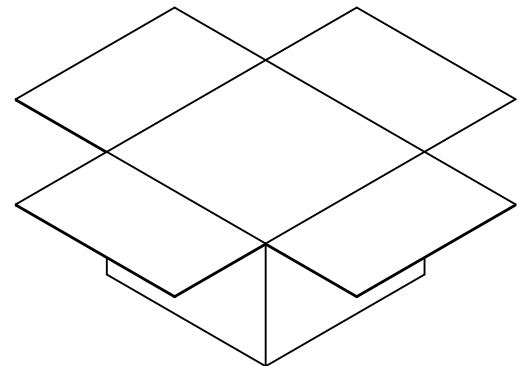
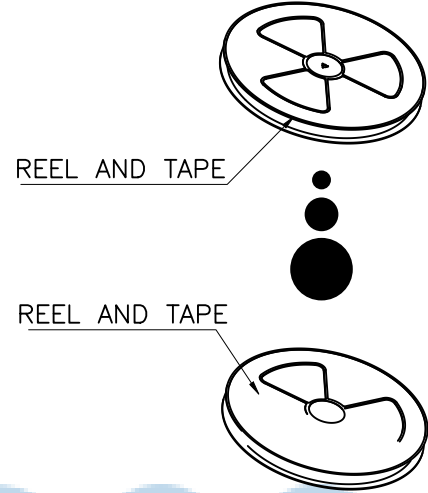
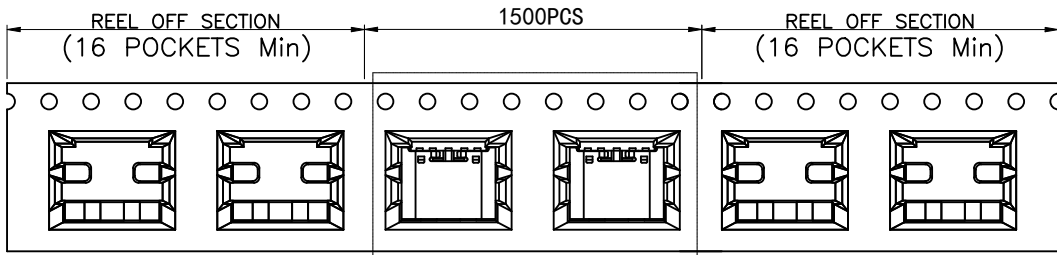
.X: ±0.38 X': ±3'  
.XX: ±0.25 .X': ±2'  
.XXX: ±0.13 .XX': ±1'

NAME:TYPE-C 6P 母座 短体 L=5.0 CH=1.63 舌片外露1.35 板上型 后两脚插 端子SMT 第四代 编带

APPD JM\_Zheng  
CHKD Tang  
DR LYX

PJ NO: 126-221-060008-S8G  
SIZE:A4 DRW NO:  
FINISH:SEE NOTES MAT'L:SEE NOTES  
SCALE:N/A REV:A0 UNIT:mm PAGE:1/2

REV.	ECN NO	CONTENT	DATE	ENGINEER
A0		Initial release	/	TSP



PULL OUT DIRECTION

THIS DOCUMENT IS THE SOLE PROPERTY OF BBJconn Technology Co.,Ltd. Corporation AND SHOULD NOT BE USED IN WHOLE OR IN PART WITHOUT PRIOR WRITTEN PERMISSION. PDWG:NO: 0325-2		<b>深圳市步步精科技有限公司</b>	
.X: ±0.38	.X': ±3"	NAME:TYPE-C 6P 母座 短体 L=5.0 CH=1.63 舌片	
.XX: ±0.25	.X': ±2"	外露1.35 板上型 后两脚插 端子SMT 第四代 编带	
.XXX: ±0.13	.XX': ±1"	APPD. JM_Zheng	PJ. NO.:126-221-060008-S8G
CHKD. Tang	DR. LYX	SIZE: A4	DRW NO.:
FINISH: SEE NOTES		MAT'L.: SEE NOTES	
SCALE: N/A		REV.: A0	UNIT: mm
PAGE: 2/2			