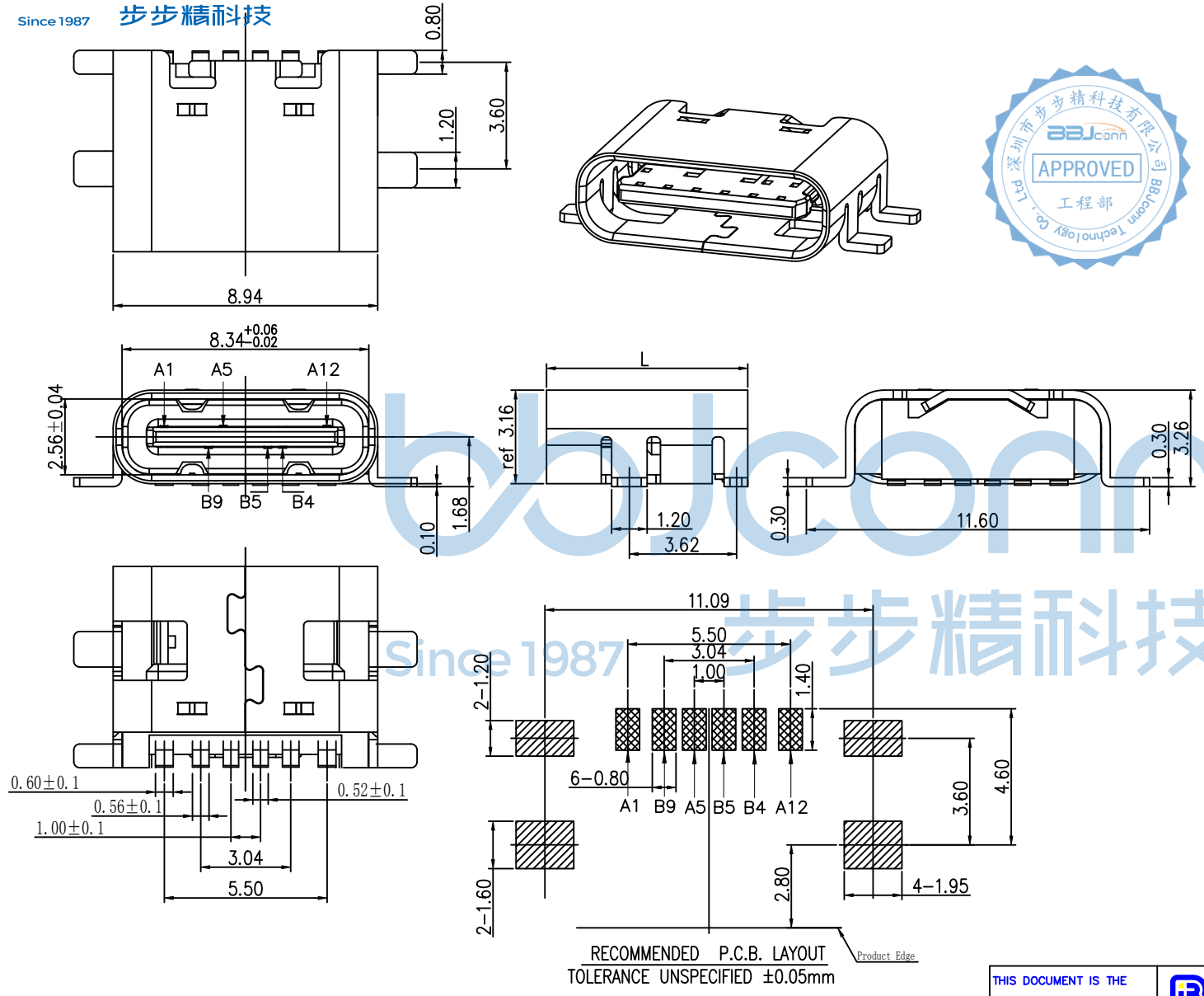


REV.	ECN NO	CONTENT	DATE	ENGINEER
A0				

NOTE:

- MATERIAL SPECIFICATION:
 - HOUSING: HIGH TEMPERATURE RESISTANT PLASTIC, UL94 V-0.
 - CONTACTS: COPPER ALLOY
 - MID PLATE: STAINLESS STEEL
 - FRONT SHELL: STAINLESS STEEL
- PLATING SPECIFICATION:
 - CONTACTS:
 - Ni 50u" MIN. UNDER PLATED OVER ALL.
 - Au 1u" PLATED ON THE FUNCTIONAL AREA OF CONTACT. (GOLD PLATING THICKNESS FOLLOW)
 - PLATING SPECIFICATIONS OF THE SOLDER AREA FOLLOW
 - FRONT SHELL:
 - Ni 50u" MIN. PLATED OVER ALL.
 - SHIELD PLATE&EMI PLATE:
 - CLEAR ONLY
- MECHANICAL PERFORMANCE,
 - INSERTION FORCE: 0.5~2.0kgf.
 - REMOVAL FORCE: 0.8kgf~2.0kgf.
 - DURABILITY: 10000 CYCLES.
- ELECTRICAL PERFORMANCE,
 - CURRENT RATING: 3.0A
VOLTAGE RATING: 5.0V
 - LLCR:
 - VBUS & GND PINS AND OTHER PINS: 40mΩ/PIN MAX.
 - SHIELD: 50mΩ/MAX.
 - LLCR MAX. CHANGE OF ALL PINS: 10mΩ.
 - INSULATION RESISTANCE: 100MΩ MIN
 - DIELECTRIC WITHSTAND VOLTAGE, AC 100V FOR 1 MINUTE.
- ENVIRONMENTAL PERFORMANCE:
 - OPERATING TEMPERATURE: -25° C~+85° C.
- IR REFLOW:
 - THE PEAK TEMPERATURE ON THE BOARD SHALL BE MAINTAINED FOR 10 SECONDS AT 260° C.



PIN ASSIGNMENTS

A1	GND	B9	VBUS
A5	CC1	B5	CC2
A12	GND	B4	VBUS
PIN	SIGNAL NAME	PIN	SIGNAL NAME

L	L = 6.8
L	L = 6.5

THIS DOCUMENT IS THE SOLE PROPERTY OF BBJconn Technology Co., Ltd. Corporation AND SHOULD NOT BE USED IN WHOLE OR IN PART WITHOUT PRIOR WRITTEN PERMISSION.

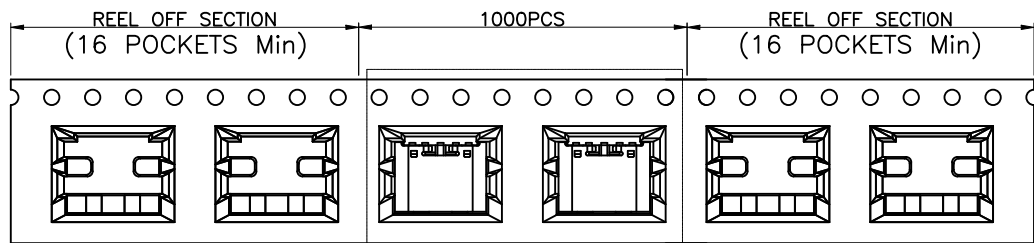
PDWG.NO: 0325-2

深圳市步步精科技有限公司

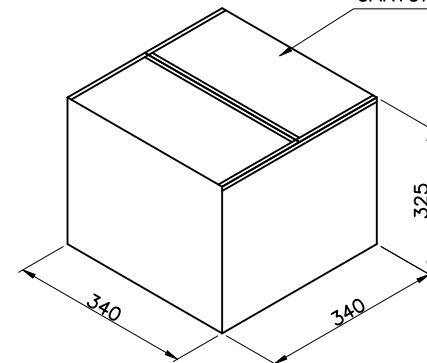
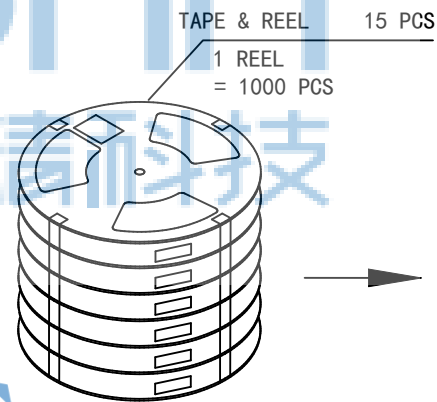
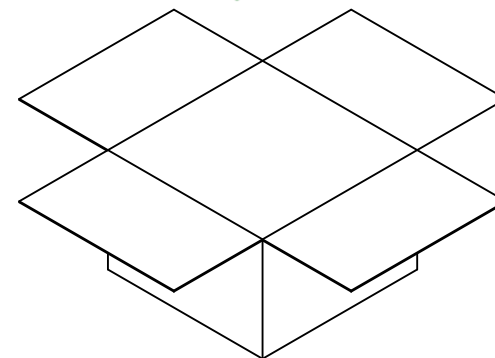
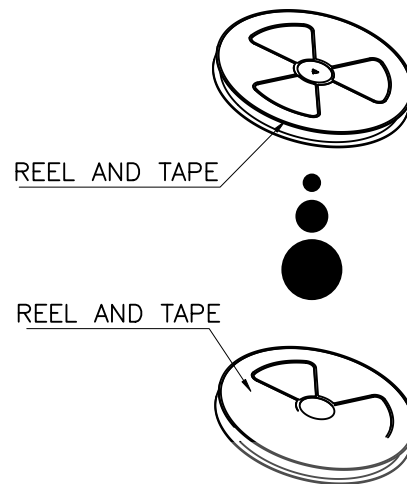
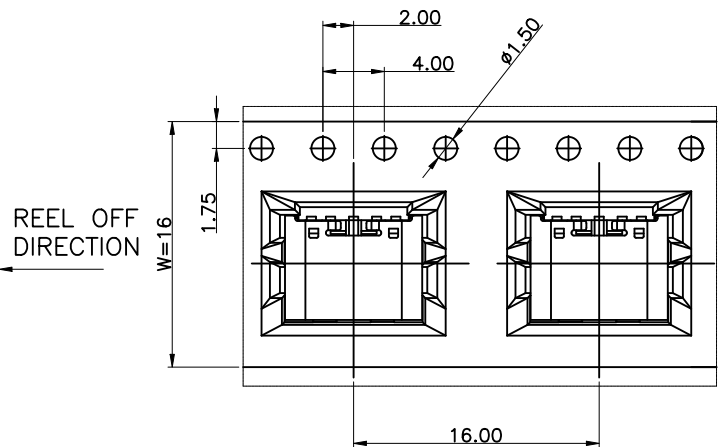
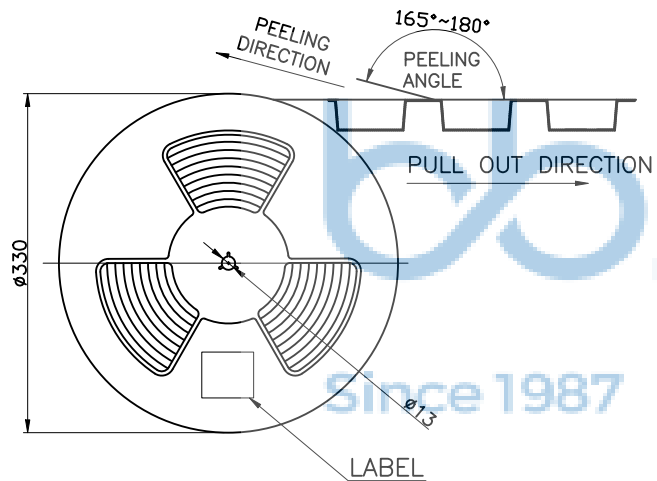
.X: ±0.38	X*: ±3*	NAME: TYPE-C 6P 母座 板上四脚全贴 L=6.80
.XX: ±0.25	.X*: ±2*	CH=1.68 端子SMT 端子镀金足1u 带中夹片
.XXX: ±0.13	.XX*: ±1*	
APPD. JM_Zheng		PJ. NO.: 126-221-060012-S8G
CHKD. LYX		SIZE: A4 DRW NO.:
DR. TSP		FINISH: SEE NOTES MAT'L.: SEE NOTES
		SCALE: N/A REV.: A0 UNIT: mm PAGE: 1/2



REV.	ECN NO	CONTENT	DATE	ENGINEER
A0				



SEE DETAIL X



THIS DOCUMENT IS THE SOLE PROPERTY OF BBJconn Technology Co., Ltd. Corporation AND SHOULD NOT BE USED IN WHOLE OR IN PART WITHOUT PRIOR WRITTEN PERMISSION.
PDWG.NO: 0325-2

	REEL	CARTON
CONNECTOR (PCS)	1000	10000

深圳市步步精科技有限公司

.X: ±0.38	X*: ±3'	NAME: TYPE-C 6P 母座 板上四脚全贴 L=6.80
.XX: ±0.25	.X*: ±2'	CH=1.68 端子SMT 端子镀金足1u 带中夹片
.XXX: ±0.13	.XX*: ±1'	
APPD. JM_Zheng		PJ. NO.: 126-221-060012-S8G
CHKD. LYX		SIZE: A4 DRW NO.:
DR. TSP		FINISH: SEE NOTES MAT'L.: SEE NOTES
		SCALE: N/A REV.: A0 UNIT: mm PAGE: 2/2