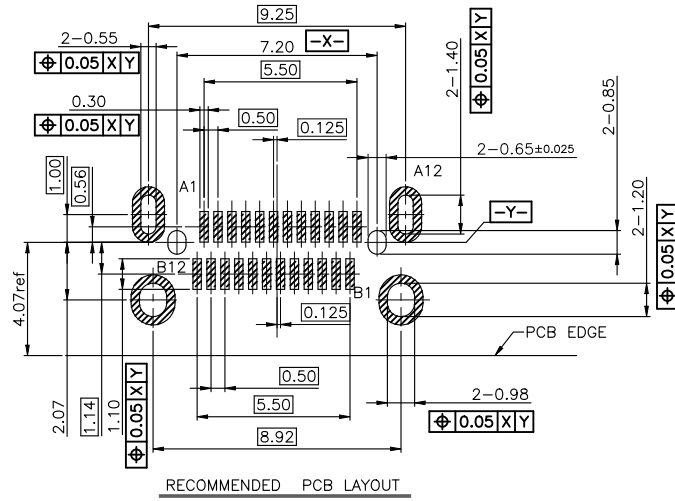
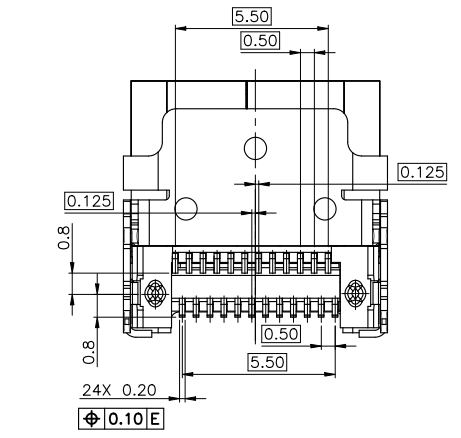
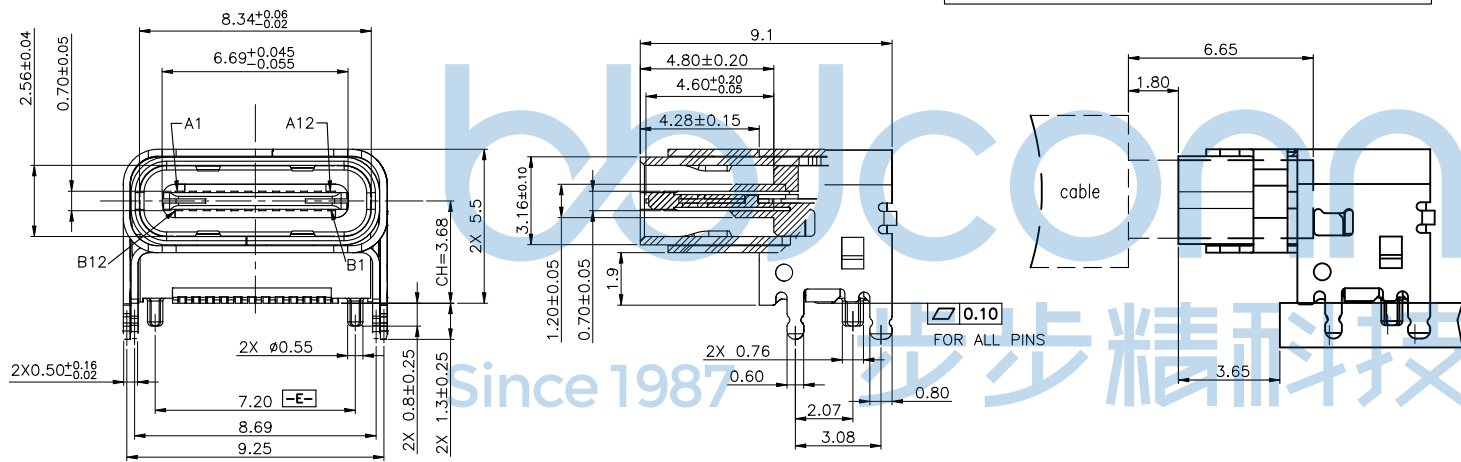
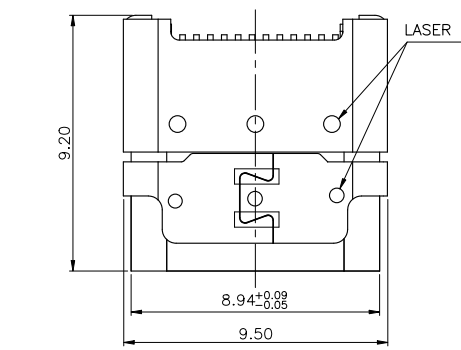
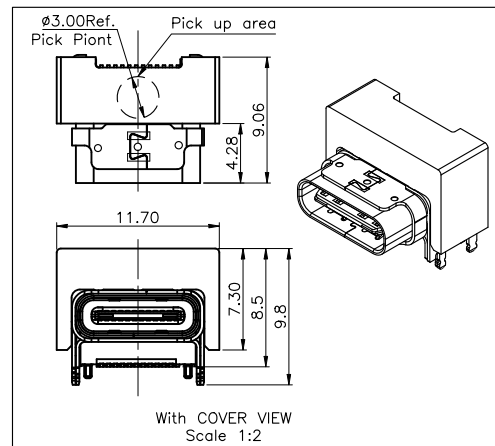


REV.	ECN NO	CONTENT	DATE	ENGINEER
A0		Initial release	/	TSP

- NOTE:
- MATERIAL:
SEE TABLE 1
 - ELECTRICAL CHARACTERISTICS:
 - CONTACT RESISTANCE:
40mΩ Max FOR VBUS ,GNA AND OTHER CONTACTS
50mΩ CHANGE AFTER ENVIRONMENT TEST
 - CONTACT CURRENT RATING:
COLLECTIVELY VBUS PIN (A4, A9, B4, B9) , TOTAL 5A
VCCON PIN, (B5) THROUGH GND PIN (A1, A12, B1, B12) , 1.25A
OTHERS PIN, 0.25A
 - DIELECTRIC WITHSTANDING VOLTAGE: 100V AC (R. M. S).
 - INSULATION RESISTANCE 100MΩ Min.
 - MECHANICAL CHARACTERISTICS:
 - MATING FORCE: 5~20 N.
 - UNMATED FORCE: INITIAL 8~20N; 6~20N AFTER 10000 CYCLES
 - OPERATING TEMPERATURE: -40° C ~ 120° C
 - DURABILITY: 10,000 CYCLES
 - DIMENSIONS ARE IN MILLIMETERS
 - RECOMMENED PROCESS: IR REFLOW 260°C, 5 ~ 10 SECONDS.
 - THE CONNECTOR IS ROHS/HALOGEN COMPLIANT.
 - THE PACKAGE IS TAPE & REEL
 - THE PART CONFORMS TO USB TYPE C SPEC UNLESS SPECIFIED



RECOMMENDED PCB LAYOUT
PCB THICKNESS :1.20±0.05
DEFAULT TOLERANCE:±0.05

TYPE C INTERFACE (FRONT VIEW)

A1	A2	A3	A4	A5	A6	A7	A8	A9	A10	A11	A12
GND	TX1+	TX1-	Vbus	CC1	D+	D-	SBU1	Vbus	RX2-	RX2+	GND
GND	RX1+	RX1-	Vbus	SBU2	D-	D+	CC2	Vbus	TX2-	TX2+	GND
B12	B11	B10	B9	B8	B7	B6	B5	B4	B3	B2	B1

NO.	VARIETY	MATERIAL	QT,Y	REMARK
08	COVER	LCP	1	Black, UL94 V-0
07	UNDER SHELL	SUS304	1	T=0.25,Solder area Plating Au 1U"
06	OUTER SHELL	SUS304	1	T=0.25,Solder area Plating Au 1U"
05	INNER SHELL	SUS304	1	T=0.30,Plating nickel
04	MOLDING	LCP	1	Black, UL94 V-0
03	SHIELDING PLATE	SUS301	1	T=0.15 ,Plating nickel
02	BOTTOM CONTACT	Copper alloy	12	T=0.12 ,Au Fu", Plated at contact area,1U" MIN plated at solder area.
01	TOP CONTACT	Copper alloy	12	T=0.12 Au Fu", Platedat at contact area,1U" MIN plated at solder area.

THIS DOCUMENT IS THE SOLE PROPERTY OF **BBJconn Technology Co.,Ltd.** Corporation AND SHOULD NOT BE USED IN WHOLE OR IN PART WITHOUT PRIOR WRITTEN PERMISSION.

PDWG,NO: 0470-1

DR. TSP

APPD. JM_Zheng

CHKD. LYX

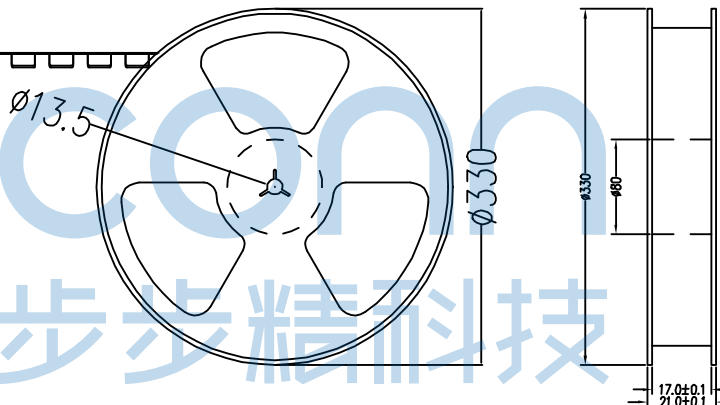
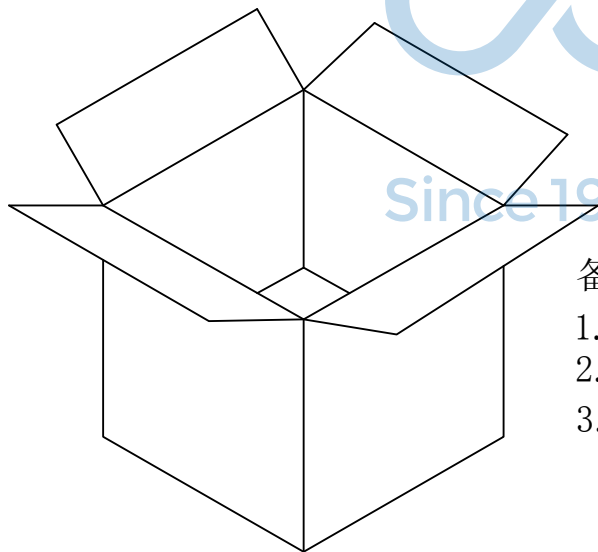
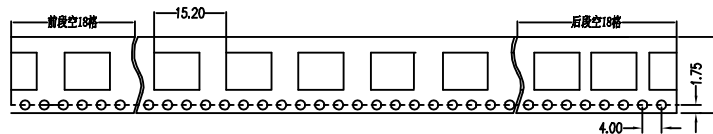
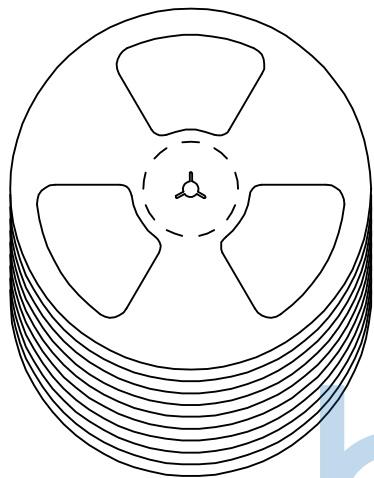
NAME: TYPE-C 24P 母座 双壳 板上四脚插 带柱 端子双排MT L=9.20 CH=3.68 垫高1.90 带带

PJ. NO.: 126-221-240022-U4G

SIZE: A4 DRW NO.:

FINISH: SEE NOTES MAT'L.: SEE NOTES

SCALE: N/A REV.: A0 UNIT: mm PAGE: 1/2



备注:

1. 包装数量: 400/PCS/卷, 10卷/箱。
2. 包装袋长度: 每卷前后各空10-20个空格, 中间包装。
3. 材质:
载体: 聚丙烯 (PS),
上带: 聚乙烯 (PET),
卷盘: 聚苯乙烯。

纸箱规格: 345*345*230MM

纸箱规格: 345*345*350MM

THIS DOCUMENT IS THE SOLE PROPERTY OF BBJconn Technology Co.,Ltd. Corporation AND SHOULD NOT BE USED IN WHOLE OR IN PART WITHOUT PRIOR WRITTEN PERMISSION.		深圳市步步精科技有限公司	
PDWG.NO: 0470-1		APPD. JM_Zheng CHKD. LYX DR. TSP	NAME: TYPE-C 24P 母座 双壳 板上四脚插 带柱 端子双排SMT L=9.20 CH=3.68 垫高1.90 绑带 PJ. NO.: 126-221-240022-U4G SIZE: A4 DRW NO.: FINISH: SEE NOTES MAT'L.: SEE NOTES SCALE: N/A REV.: A0 UNIT: mm PAGE: 2/2