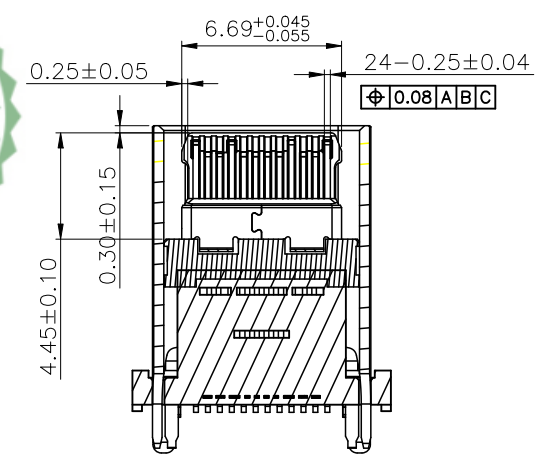
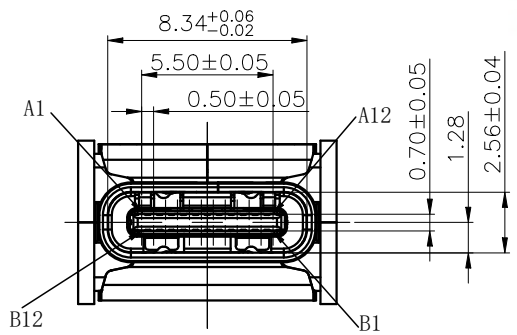
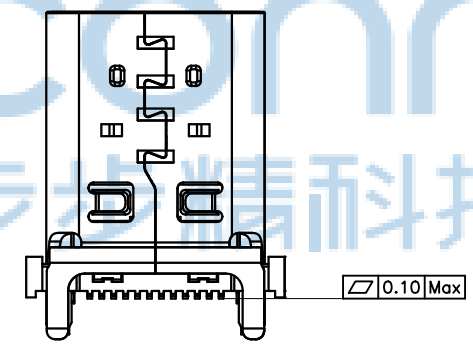
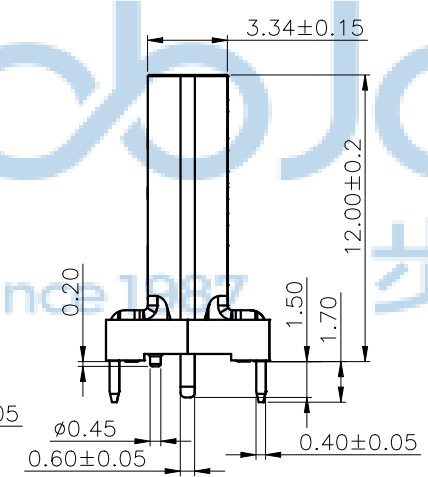
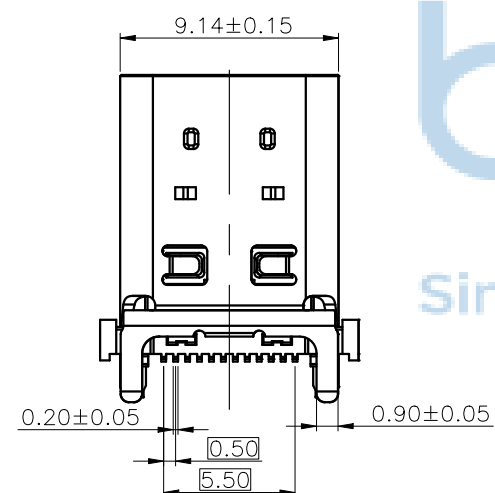




REV	ECN NO	CONTENT	DATE	ENGINEER
A0		INITIAL RELEASE	/	SGF



SECTION A-A
SCALE 1:1

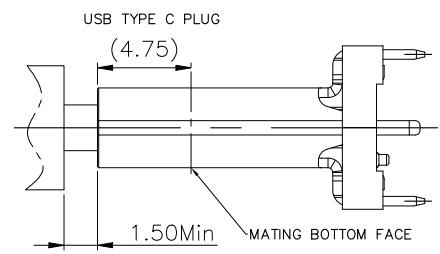
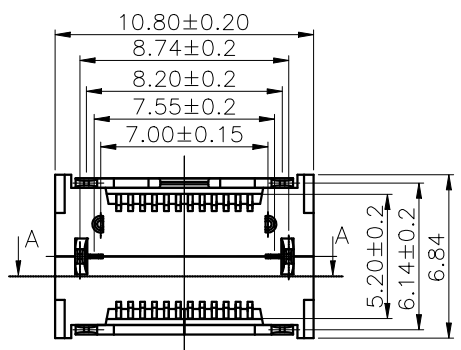


- 备注:
1. 材质:
 - 1.1 胶芯: LCP S475 UL94V-0 黑色
 - 1.2 端子: C7025 T=0.1mm; 镀底50U" MIN, 接触区域镀金 (SEE PART NO.) 焊接区镀金1u"
 - 1.3 外壳: SUS304, T=0.40mm; 表面镀镍50U" MIN;
 - 1.4 中夹片: SUS301, T=0.15mm; 表面镀镍50U" MIN;
 - 1.5 EMI片: SUS304, T=0.10mm;
 2. 主要特性:
 - 2.1 额定电流: 5.0A (GND/VBUS) ; 1.25A (VCONN)
 - 2.2 额定电压: 5.0V
 - 2.3 接触阻抗: 端子 40mΩ MAX ; 外壳 50mΩ MAX (初始值) 10mΩ MAX (测试后变化量)
 - 2.4 绝缘阻抗: 100MΩ MIN
 - 2.5 耐压测试: 100V AC R.M.S.
 - 2.6 整体插入力: 5-20N 整体插入力: 5-20N (耐久后) 整体拔出力: 8-20N 整体拔出力: 6-20N (耐久后)
 - 2.7 耐久: 10000次
 - 2.8 耐高温: SMT回流焊 (峰值260° ±5°), 塑胶不能有起泡, 融胶等不良, 变色, 翘曲变形在公差范围以内;
 3. 产品须做焊锡测试, 粘锡面积达到95%以上;
 - 3.2 工作温度: -30°C ~ +85°C
 - 3.3 盐雾测试: 48H



PIN DEFINE:

PIN ASSIGNMENT											
A1	A2	A3	A4	A5	A6	A7	A8	A9	A10	A11	A12
GND	TX1+	TX1-	VBUS	CC1	D+	D-	SBU1	VBUS	RX2-	RX2+	GND
GND	RX1+	RX1-	VBUS	SBU2	D-	D+	CC2	VBUS	TX2-	TX2+	GND
B12	B11	B10	B9	B8	B7	B6	B5	B4	B3	B2	B1



THIS DOCUMENT IS THE
SOLE PROPERTY OF
BBJconn Technology Co., Ltd.
Corporation AND SHOULD
NOT BE USED IN WHOLE
PRIOR WRITTEN PERMISSION.
PDWG NO: 0470-1

深圳市步步精科技有限公司

NAME: TYPE-C 24P 母座 直立式 H=12.0 四脚插 端子SMT 带柱 LCP黑胶 编带

PJ NO: 126-224-240001-U4G

SIZE:A4 DRW NO:

FINISH:SEE NOTES MAT'L:SEE NOTES

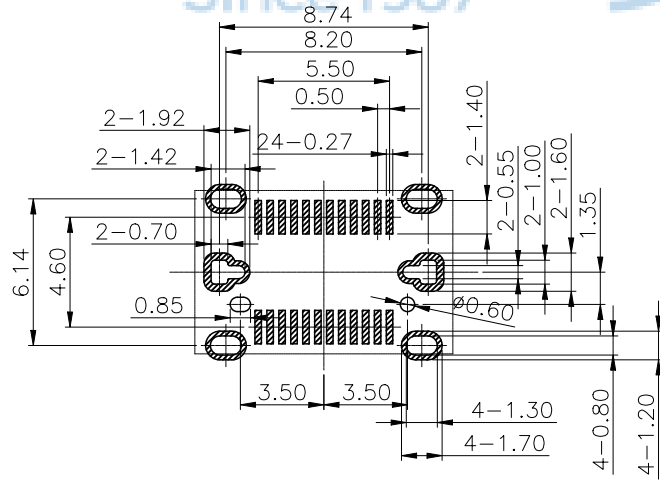
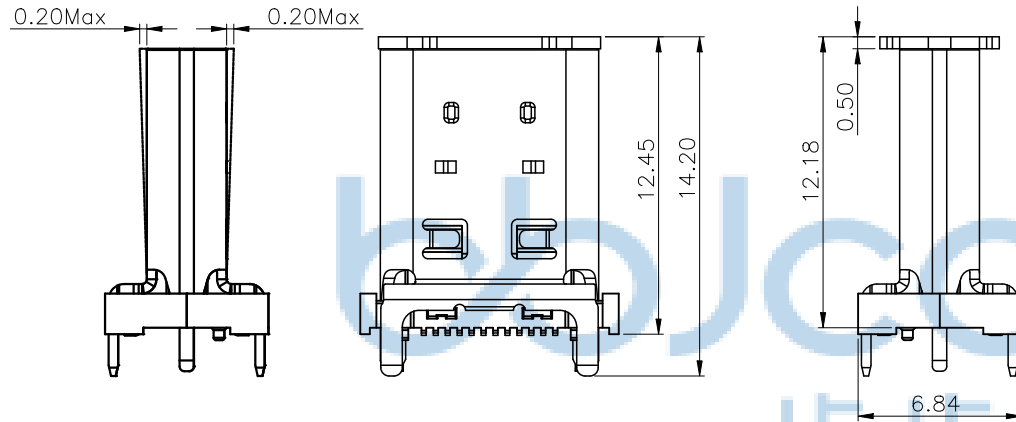
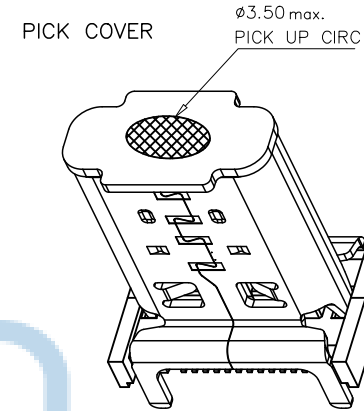
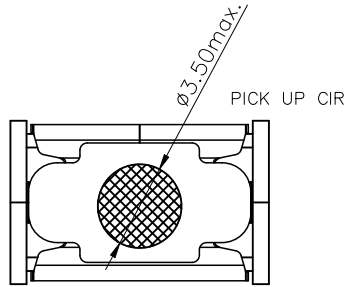
SCALE:N/A REV:A0 UNIT:mm PAGE:1/3

APPD: JM_Zheng

CHKD: LYX

DR: SGF

REV	ECN NO	CONTENT	DATE	ENGINEER
A0		INITIAL RELEASE	/	SGF



RECOMENDED PCB LAYOUT
PCB T=1.60mm
TOL: ±0.05



THIS DOCUMENT IS THE
SOLE PROPERTY OF
BBJconn Technology Co.,Ltd.
Corporation AND SHOULD
NOT BE USED IN WHOLE
PRIOR WRITTEN PERMISSION.

深圳市步步精科技有限公司

.X: ±0.38 X': ±3'
.XX: ±0.25 .X': ±2'
.XXX: ±0.13 .XX': ±1'

NAME: TYPE-C 24P 母座 直立式 H=12.0 四脚插
端子SMT 带柱 LCP黑胶 编带

APPD JM_Zheng

PJ NO: 126-224-240001-U4G

CHKD LYX

SIZE:A4 DRW NO:

DR SGF

FINISH:SEE NOTES MAT'L:SEE NOTES

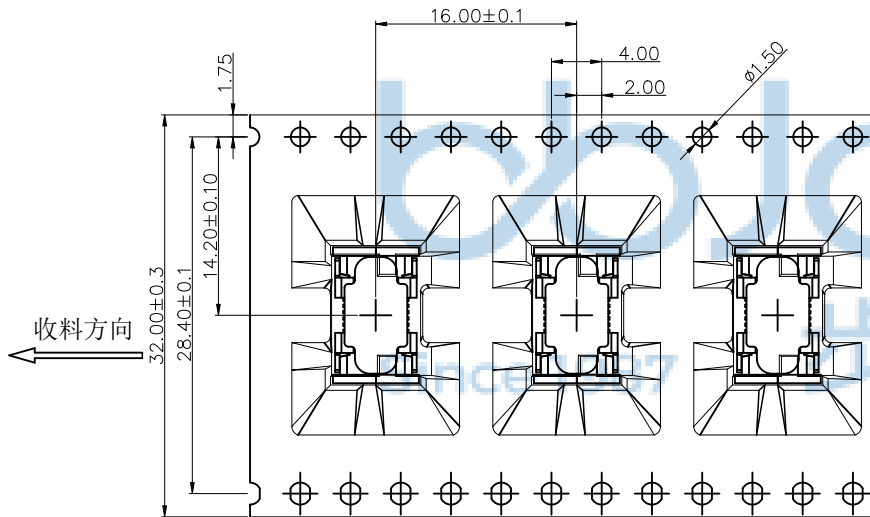
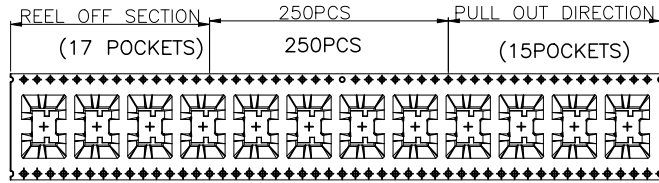
PDWG NO: 0470-1

SCALE:N/A REV:A0 UNIT:mm PAGE:2/3

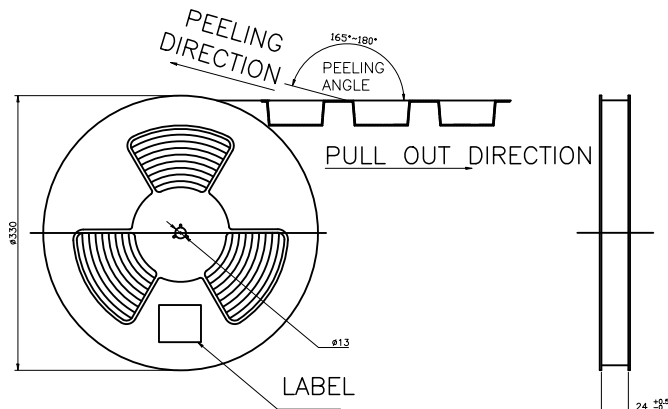
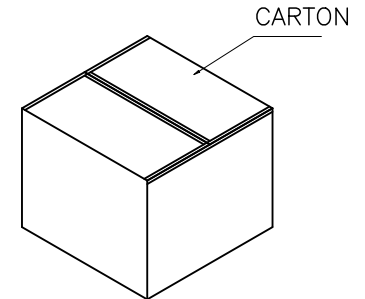
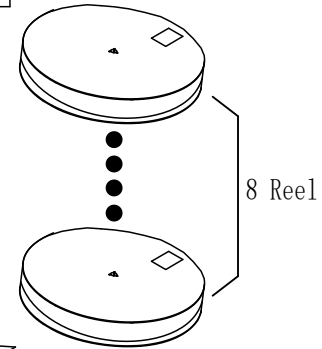
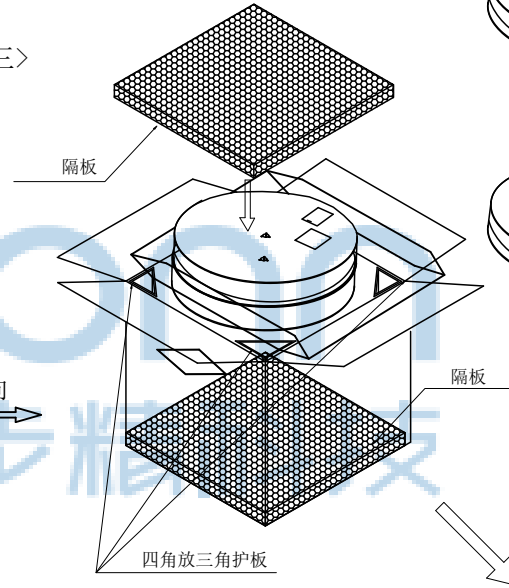
REV	ECN NO	CONTENT	DATE	ENGINEER
A0		INITIAL RELEASE	/	SGF

<TABLE 1> PACKAGING QUANTITY

QTY/REEL	REEL/CARTON	QTY/CARTON
250	8	2000



<图三>



放料方向

备注:

1. 依<图一>示放置产品于Carrier tape中, 每穴放置1PCS产品, Carrier tape卷绕时, 前端和尾端各需预留15PCS空格.
2. Cover tape覆盖Carrier tape前端需超出240mmMIN, 后端需留出240mmMIN, 两端都以美文胶贴固.
3. 包装机包好后, 在Reel的个等分点贴上胶带, 以防止REEL张开, 每REEL贴1PCS标签, 如<图二>示
4. 包装数量见如<TABLE 1>示
5. 包装成箱见如<图三>示
箱底放隔板, 8个 REEL盘, 放入箱内, 四角各放一个三角护板, 最上层再放上保丽龙板.
6. 封箱, 在封好的纸箱侧面中间位置贴上出货标签.



THIS DOCUMENT IS THE
SOLE PROPERTY OF
BBJconn Technology Co.,Ltd.
Corporation AND SHOULD
NOT BE USED IN WHOLE
PRIOR WRITTEN PERMISSION.

深圳市步步精科技有限公司

.X: ±0.38 X': ±3"
.XX: ±0.25 .X': ±2"
.XXX: ±0.13 .XX': ±1"

NAME: TYPE-C 24P 母座 直立式 H=12.0 四脚插
端子SMT 带柱 LCP黑胶 编带

APPD JM_Zheng

PJ NO: 126-224-240001-U4G

CHKD LYX

SIZE:A4 DRW NO:

PDWG NO: 0470-1 DR SGF

FINISH:SEE NOTES MAT'L:SEE NOTES
SCALE:N/A REV:A0 UNIT:mm PAGE:3/3