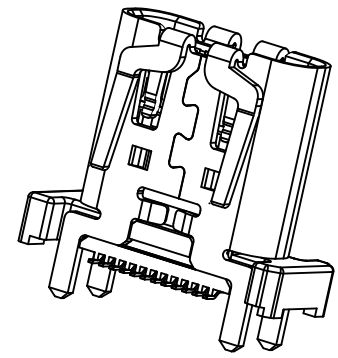
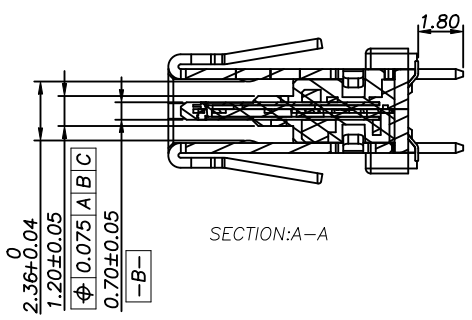
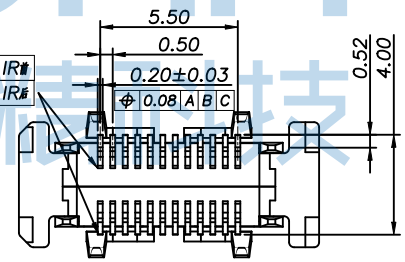
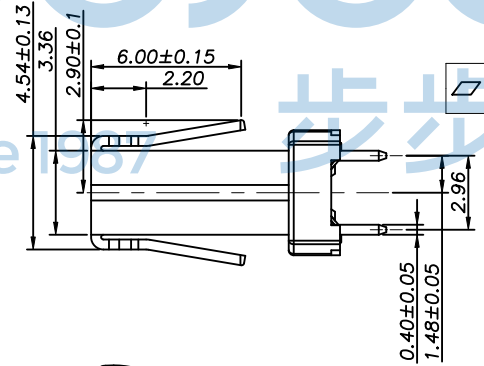
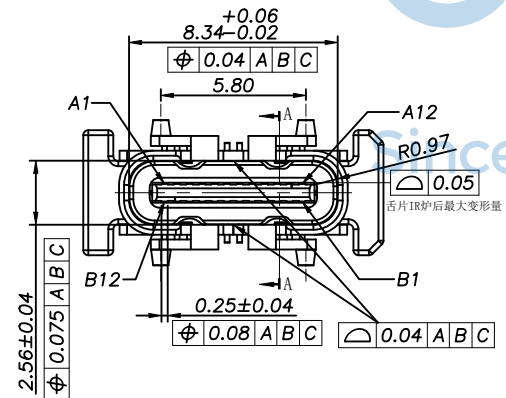
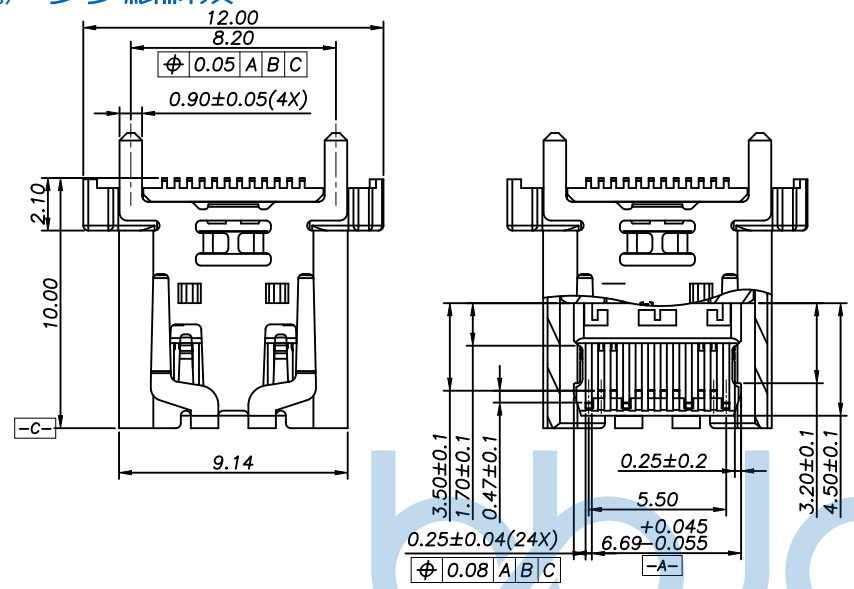


REV.	ECN NO	CONTENT	DATE	ENGINEER
A0		Initial release	/	TSP

NOTES:

- ELECTRICAL CHARACTERISTICS
 - CURRENT RATING:VBUS AND GND CONTACTS RATED AT1.25A, PARALLELED FOR A TOTAL OF 5A;
 - INITIAL CONTACT RESISTANCE:40mΩ Max.;
 - INSULATION RESISTANCE:100MΩ Min. AT 500V DC
 - DIELECTRIC WITHSTANDING VOLTAGE:100V AC ONE MINUTE.
- MECHANICAL CHARACTERISTICS:
 - MATING FORCE:6~20N;
 - UNMATING FORCE:8~20N (INITIAL) 6~20N (AFTER1000CYCLES)
 - FREQUENCY:200±50CYCLES/HOUR10000 CYCLES;
- ENVIRONMENTAL:
 - OPERATING TEMPERATURE:-55℃TO+85℃
- HARMFUL MATERIAL AND PROCESS CONTROL,PLEASE FOLLOW DOC. NO. "QW-Q-043"&RoHS 2.0&HF;
- Salt Sptry:48H

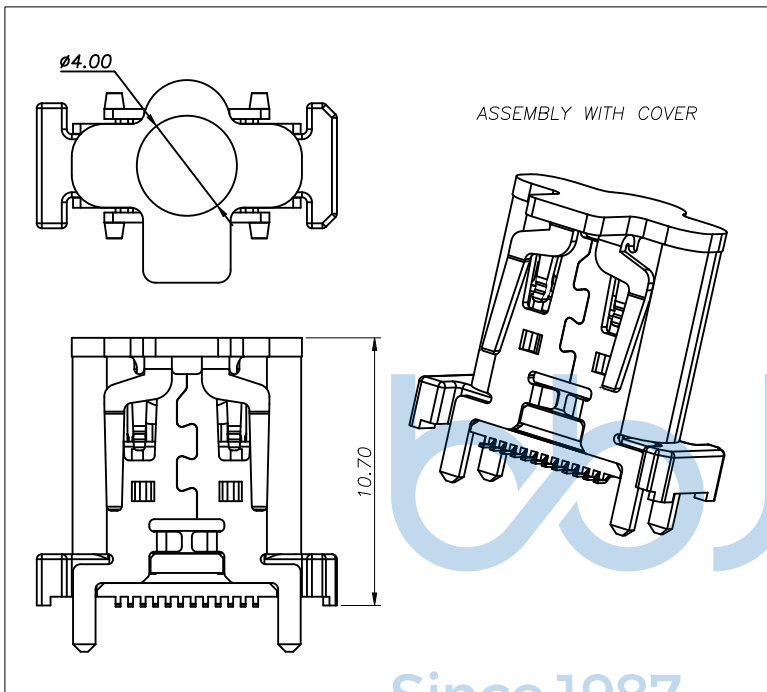


THIS DOCUMENT IS THE SOLE PROPERTY OF BBJconn Technology Co.,Ltd. Corporation AND SHOULD NOT BE USED IN WHOLE OR IN PART WITHOUT PRIOR WRITTEN PERMISSION.		深圳市步步精科技有限公司 .X: ±0.38 .X': ±3" .XX: ±0.25 .X': ±2" .XXX: ±0.13 .XX': ±1"		NAME:USB 3.2 TYPE-C 24P 母座 直立式 四脚插 外壳带外弹 端子SMT H=10.0 编带	
APPD.	JM_Zheng	PJ. NO.: 126-226-240005-U4G SIZE: A4 DRW NO.:		FINISH: SEE NOTES MAT'L.: SEE NOTES	
CHKD.	LYX	SCALE: N/A		REV.: A0	UNIT: mm
PDWG.NO:	0470-1	DR.	TSP	PAGE:	1/3

REV.	ECN NO	CONTENT	DATE	ENGINEER
A0		Initial release	/	TSP

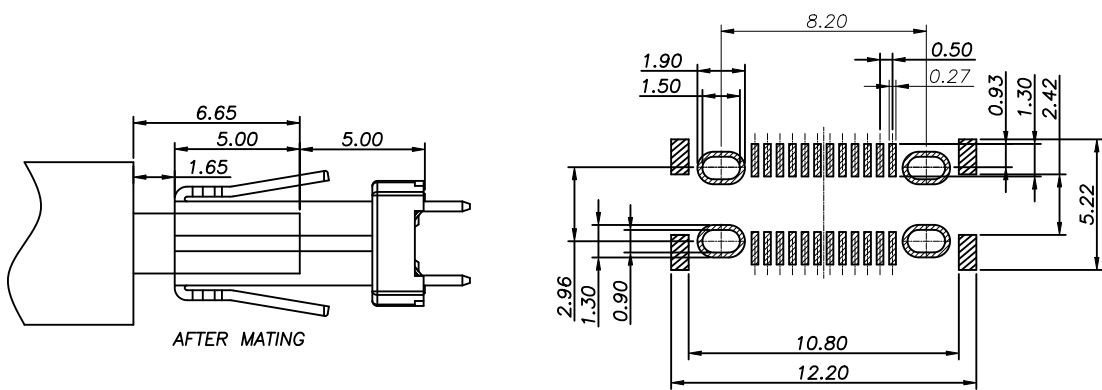
NOTES:

1. HOUSING MATERIAL: PA9T BLACK
2. SHELL MATERIAL H:SUS304 1/2H
3. SHELL PLATING:NI
4. CONTACT FUNCTIONAL AREA PLATED: Au 15u"
5. CONTACT SOLDER AREA PLATED: Au 1u"
6. CONTACT MATERIAL: C18150



USB TYPE-C PIN ASSIGNMENTS

PIN NUMBER	SIGNAL NAME	PIN NUMBER	SIGNAL NAME
A1	GND	B12	GND
A2	SSTXp1	B11	SSRXp1
A3	SSTXn1	B10	SSRXn1
A4	VBUS	B9	VBUS
A5	CC1	B8	SBU2
A6	Dp1	B7	Dn2
A7	Dn1	B6	Dp2
A8	SBU1	B5	CC2
A9	VBus	B4	VBUS
A10	SSRXn2	B3	SSTXn2
A11	SSRXp2	B2	SSTXp2
A12	GND	B1	GND



RECOMMENDED PCB LAYOUT(TOP VIEW)
THICKNESS 1.0±0.10MM;DEFAULT TOLERANCE:±0.05

THIS DOCUMENT IS THE SOLE PROPERTY OF BBJconn Technology Co.,Ltd. Corporation AND SHOULD NOT BE USED IN WHOLE OR IN PART WITHOUT PRIOR WRITTEN PERMISSION.

PDWG.NO: 0470-1

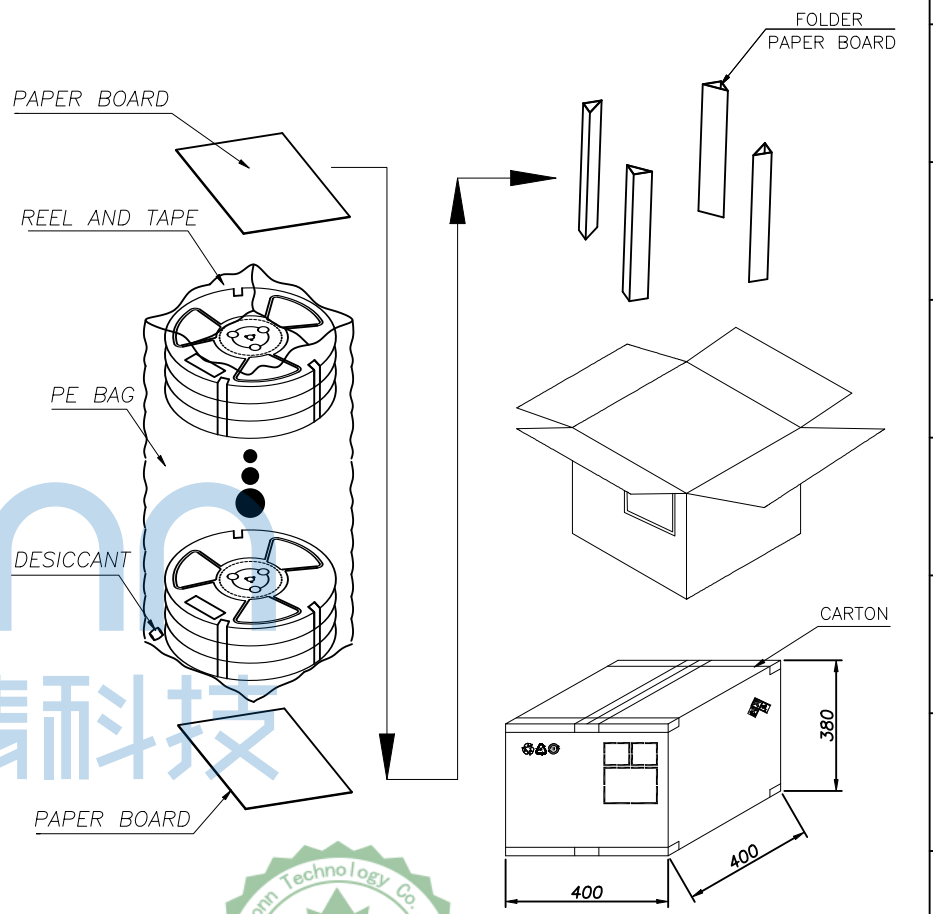
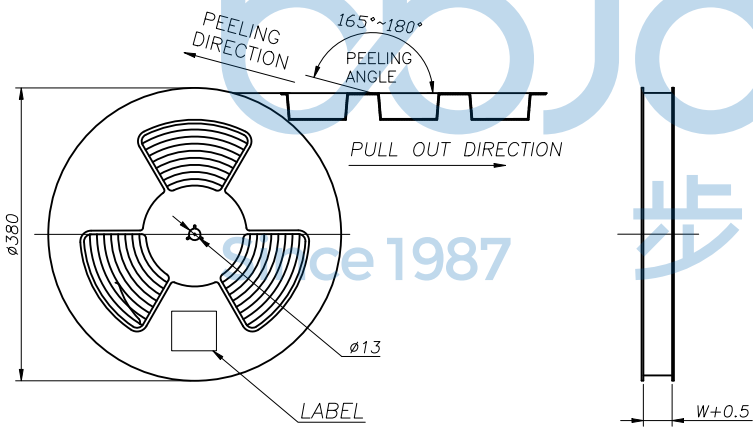
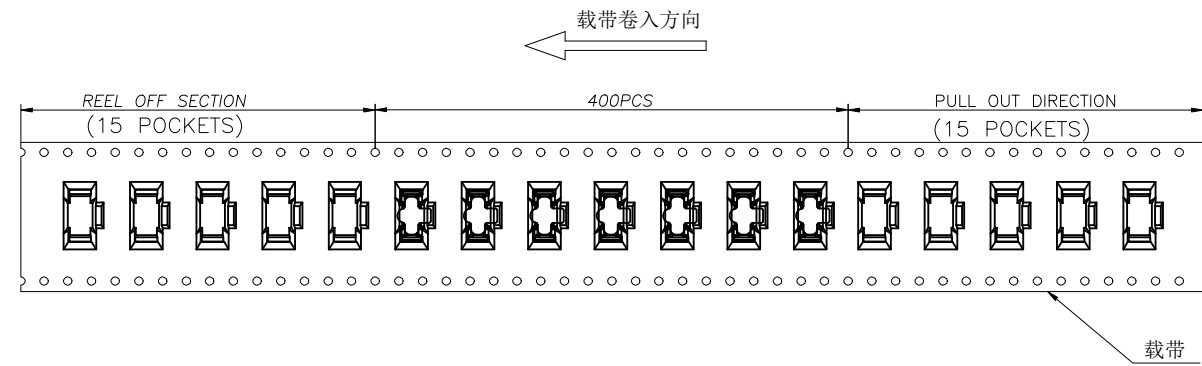
APPD. JM_Zheng
CHKD. LYX
DR. TSP

NAME:USB 3.2 TYPE-C 24P 母座 直立式 四脚插 外壳带外弹 端子SMT H=10.0 编带

PJ. NO.: 126-226-240005-U4G
SIZE: A4 DRW NO.:

FINISH: SEE NOTES MAT'L.: SEE NOTES
SCALE: N/A REV.: A0 UNIT: mm PAGE: 2/3

REV.	ECN NO	CONTENT	DATE	ENGINEER
A0		Initial release	/	TSP



	REEL	CARTON
CONNECTOR (PCS)	400	3200

THIS DOCUMENT IS THE SOLE PROPERTY OF BBJconn Technology Co.,Ltd. Corporation AND SHOULD NOT BE USED IN WHOLE OR IN PART WITHOUT PRIOR WRITTEN PERMISSION.		深圳市步步精科技有限公司 .X: ±0.38 .X': ±3" .XX: ±0.25 .X": ±2" .XXX: ±0.13 .XX': ±1"		NAME: USB 3.2 TYPE-C 24P 母座 直立式 四脚插 外壳带外弹 端子SMT H=10.0 编带 PJ. NO.: 126-226-240005-U4G SIZE: A4 DRW NO.: FINISH: SEE NOTES MAT'L.: SEE NOTES SCALE: N/A REV.: A0 UNIT: mm PAGE: 3/3	
APPD.	JM_Zheng				
CHKD.	LYX				
PDWG.NO:	0470-1	DR.	TSP		