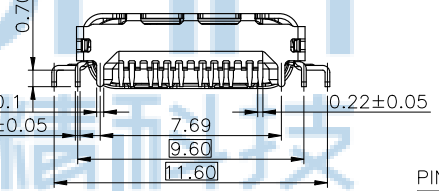
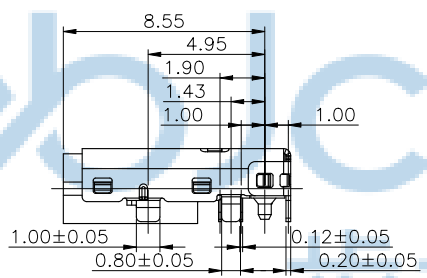
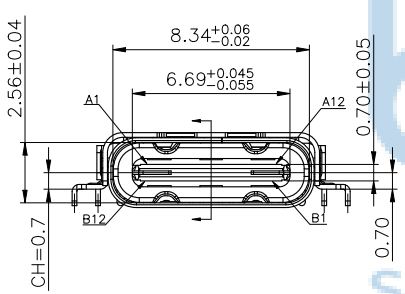
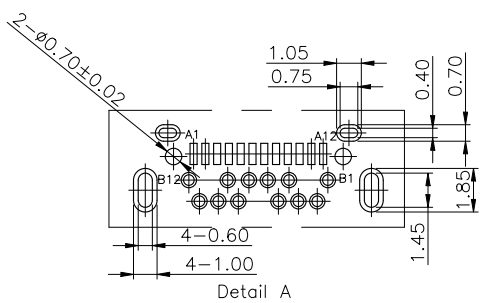
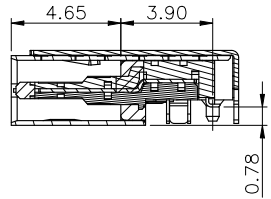
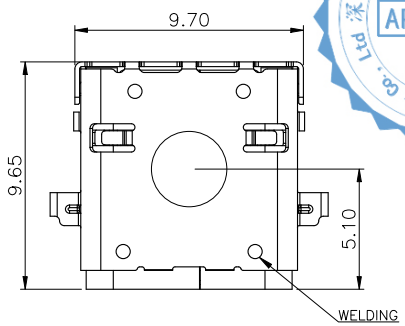
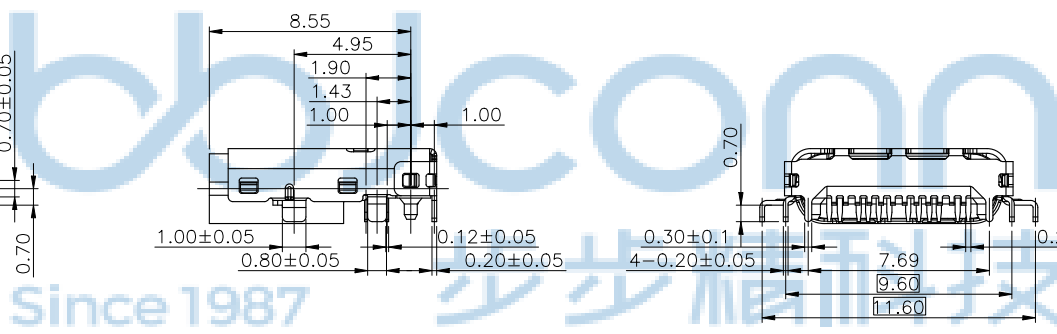




REV	ECN NO	CONTENT	DATE	ENGINEER
A0		INITIAL RELEASE	/	SGF

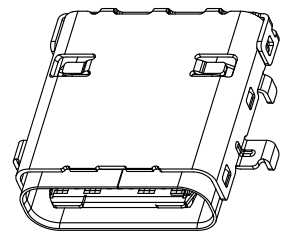
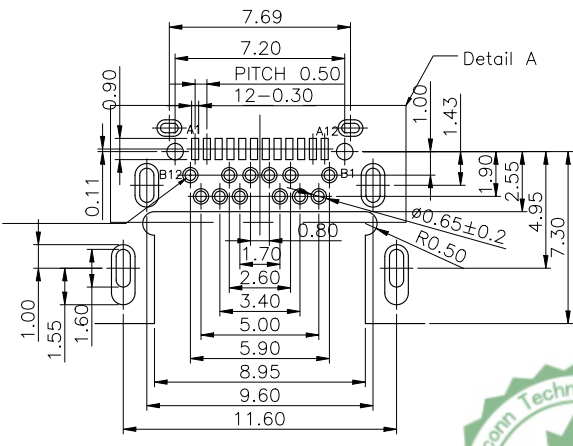
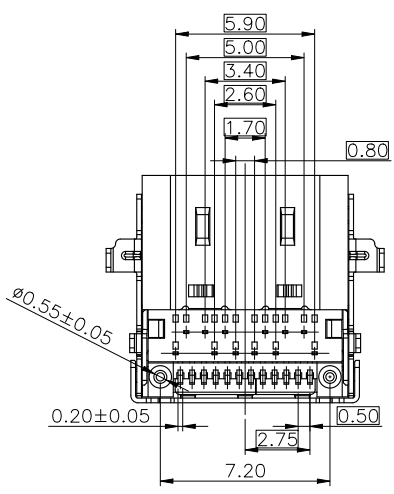


- 备注:
- 材质:
    - 1.1 外壳: SUS301
    - 1.2 内壳: SUS301
    - 1.3 中节片: SUS301
    - 1.4 屏蔽片: SUS316
    - 1.5 主体: PA9T 黑色
    - 1.6 端子: C19400
  - 电镀规格:
    - 2.1 端子:接触区:GOLD FLASH
    - 2.2 外壳: 镀镍 60u"以上.
  - 电气特性:
    - 3.1 额定电流: 5.0 A  
额定电压: 20.0 V
    - 3.2 接触阻抗: VBUS& GND PINS: 40mΩ/PIN MAX  
OTHER PINS : 40mΩ/PIN MAX  
CHANGE OF ALL PINS: 10mΩ
    - 3.3 绝缘电阻: 100MΩ 以上.
  - 机械特性:
    - 4.1 插入力: 0.5~2.0kg.
    - 4.2 拔出力: 0.8~2.0kg. (测试前) 0.6~2.0kg. (测试后)
  - 寿命试验: 10000次



PIN 定义:

PIN NUMBER	SIGNAL NAME	PIN NUMBER	SIGNAL NAME
A1	GND	B12	GND
A2	SSTXp1	B11	SSRXp1
A3	SSTXn1	B10	SSRXn1
A4	Vbus	B9	Vbus
A5	CC1	B8	SBU2
A6	Dp1	B7	Dn2
A7	Dn1	B6	Dp2
A8	SBU1	B5	CC2
A9	Vbus	B4	Vbus
A10	SSRXn2	B3	SSTXn2
A11	SSRXp2	B2	SSTXp2
A12	GND	B1	GND



RECOMMENDED PCB LAYOUT(TOP VIEW)  
(TOLERANCE=±0.05mm)



THIS DOCUMENT IS THE  
SOLE PROPERTY OF  
BBJconn Technology Co.,Ltd.  
Corporation AND SHOULD  
NOT BE USED IN WHOLE  
PRIOR WRITTEN PERMISSION.  
PDWG NO: 0470-1

**深圳市步步精科技有限公司**

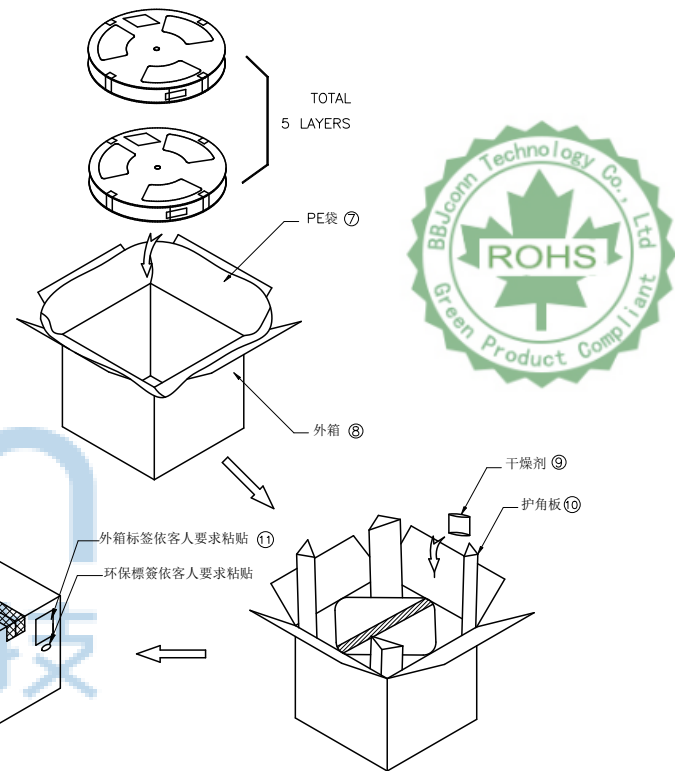
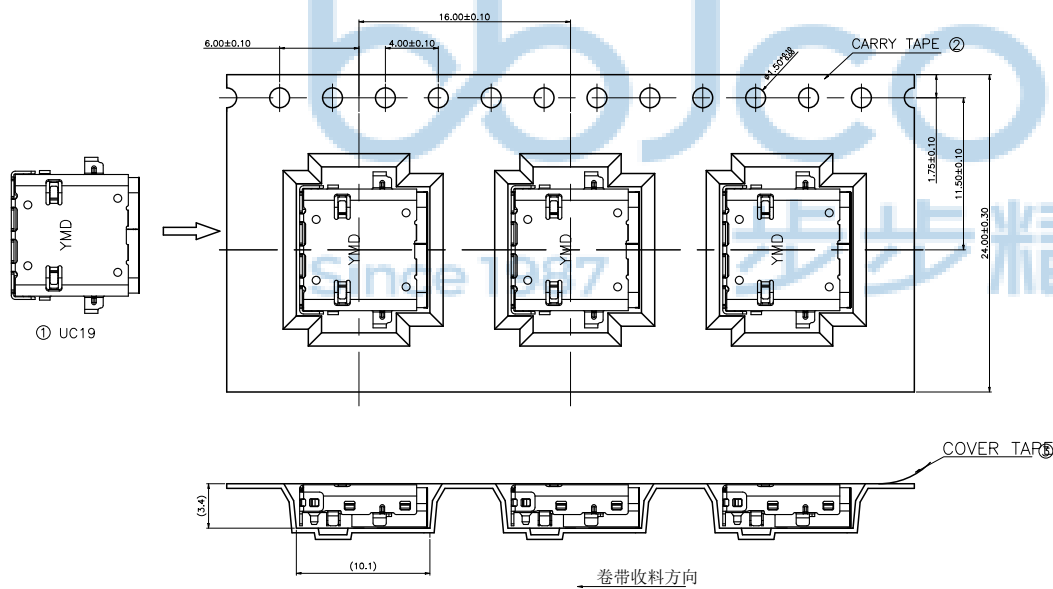
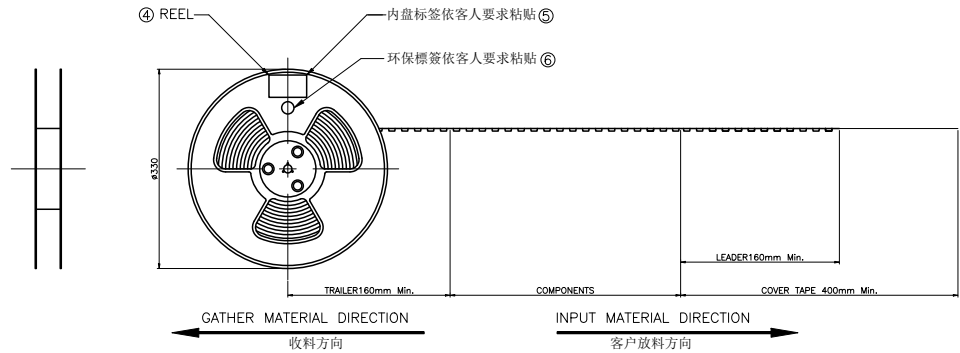
NAME: TYPE-C 24P 母座 有后盖 双壳 六脚插 端  
子SMT+DIP 沉板 0.78 L=9.65 CH=0.70 编带

APPD: JM\_Zheng  
CHKD: LYX  
DR: SGF

FINISH:SEE NOTES  
SCALE:N/A  
REV:A0  
UNIT:mm  
PAGE:1/2

PJ NO: 126-223-240015-U4G  
SIZE:A4  
DRW NO:  
MAT'L:SEE NOTES

REV	ECN NO	CONTENT	DATE	ENGINEER
A0		INITIAL RELEASE	/	SGF



项目品名	规格	数量
① UC19	USB TYPE C母座	4500PCS
② CARRY TAPE	W=24mm P=16mm L=14.9M	5SET
③ COVER TAPE	W=20.7mm	155m
④ REEL	D=φ13" x24mm	5PCS
⑤ 内盘标签	—	5PCS
⑥ 环保标签	—	5PCS
⑦ PE袋	(400+250)x500x0.06mm	1PCS
⑧ 外箱	350x350x155mm K=K	1PCS
⑨ 干燥剂	—	2PCS
⑩ 护角板	100X100X140mm B=B	4PCS
⑪ 外箱标签	—	1PCS

- Notes:
- 每卷卷带的开始端留160mm以上空格不装产品（参考值：15PCS），以实际包装数量装满后，结束端预留160mm以上空格不装产品（参考值：15PCS）
  - 卷带用自封胶带封口，1个卷盘放置900PCS产品；
  - 再绕一圈环保带，环保带最后重量约50mm，每个卷盘须贴一张条码标签和无齿标签（或依客人要求粘贴）；
  - 将PE袋套入外箱后，将5盘装好产品的卷盘依次放入纸箱，并在纸箱封角各放入干燥剂一袋；
  - 外箱外侧用胶带封口，每个外箱外侧图示位置贴一张条码标签和无齿标签（或依客人要求粘贴）；
  - COVER TAPE与CARRY TAPE剥离力：20g~120g；剥离角度：165°~175°；剥离速度：250~300mm/min；
  - 包装数量：900PCS/REEL，5REEL/CARTON，共4500PCS/CARTON；



THIS DOCUMENT IS THE SOLE PROPERTY OF BBJconn Technology Co.,Ltd. Corporation AND SHOULD NOT BE USED IN WHOLE PRIOR WRITTEN PERMISSION.

PDWG NO: 0470-1

DR SGF

深圳市步步精科技有限公司

NAME: TYPE-C 24P 母座 有后盖 双壳 六脚插 端子SMT+DIP 沉板0.78 L=9.65 CH=0.70 编带

PJ NO: 126-223-240015-U4G

SIZE:A4 DRW NO:

FINISH:SEE NOTES MAT'L:SEE NOTES

SCALE:N/A REV:A0 UNIT:mm PAGE:2/2