

REV.	ECN NO.	CONTENT	DATE	ENGINEER
A0		Initial release	/	SGF

备注:
 1. 材质:
 1.1 胶芯: PA46
 1.2 端子: 高导电SEE TABLE 1, T=0.25mm; 镍底40U" MIN, 接触区域镀金 (SEE TABLE 1) 焊接区镀金G/F
 1.3 外壳: SUS304, T=0.20mm; 表面镀镍50U" MIN; 焊接区镀金G/F
 1.4 中夹片: SUS301, T=0.20mm;
 2. 主要特性:
 2.1 额定电流: 5A/8A
 2.2 接触阻抗: 40mΩ MAX (初始值)
 50mΩ MAX (测试后)
 2.3 绝缘阻抗: 100MΩ MIN
 2.4 耐压测试: 100V AC R. M. S.
 2.6 整体插入力: 5-20N 整体插入力: 5-20N (耐久后)
 整体拔出力: 8-20N 整体拔出力: 6-20N (耐久后)
 2.7 耐久: 10000次
 2.8 耐高温: SMT回流焊 (峰值260° ±5°), 塑胶不能有起泡, 融胶等不良, 变色, 翘曲变形在公差范围以内;
 2.9 产品须做锡焊测试, 粘锡面积达到95%以上;
 3.0 盐雾测试: 48H MIN
 3.1 工作温度: -30°C ~ +85°C

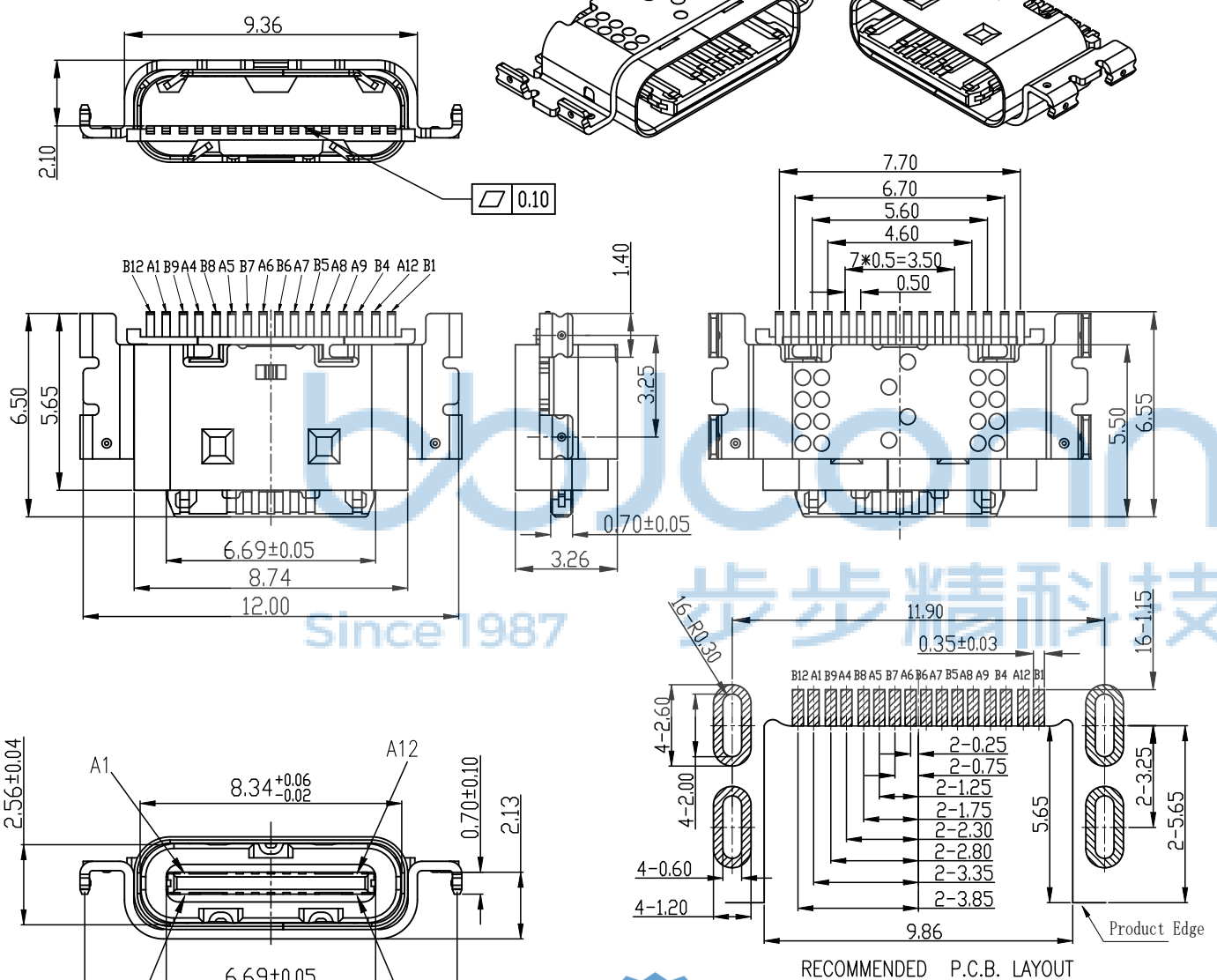


TABLE 1

端子材质	镀金规格
C2680	1u"
C18400	1u"
C18400	3u"
C2680	15u"
C2680	30u"
C2680	3 u"
C2680	5 u"



A1	GND	B12	GND
A4	VBUS	B9	VBUS
A5	CC1	B8	SBU2
A6	DP1	B7	DN2
A7	DN1	B6	DP2
A8	SBU1	B5	CC2
A9	VBUS	B4	VBUS
A12	GND	B1	GND
PIN	SIGNAL NAME	PIN	SIGNAL NAME

RECOMMENDED P.C.B. LAYOUT



THIS DOCUMENT IS THE SOLE PROPERTY OF BBJconn Technology Co., Ltd. Corporation AND SHOULD NOT BE USED IN WHOLE OR IN PART WITHOUT PRIOR WRITTEN PERMISSION. PDWG.NO: 0851-1

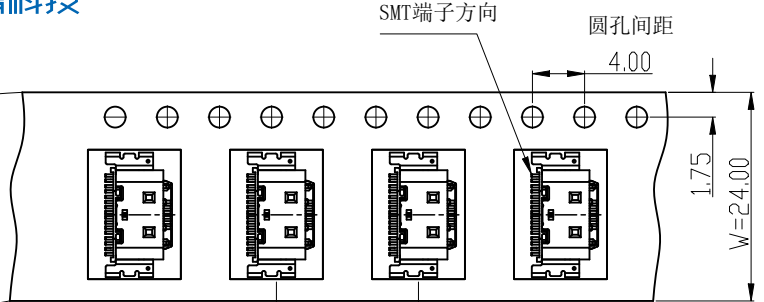
深圳市步步精科技有限公司

NAME: TYPE-C 16P 母座 四脚插 端子SMT 舌片外漏0.85 沉板2.10 L=5.65 端子电镀1U 不锈钢外壳 PA46 编带

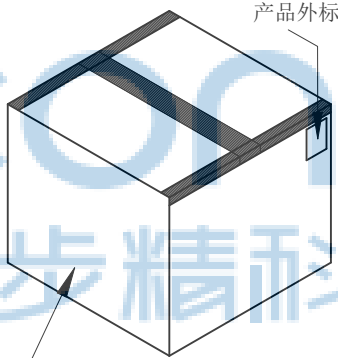
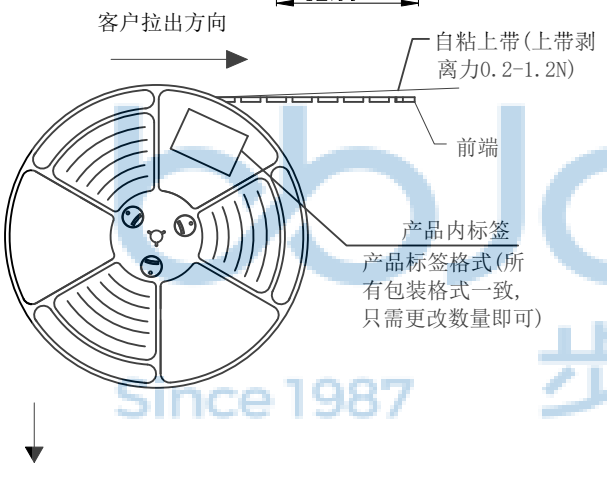
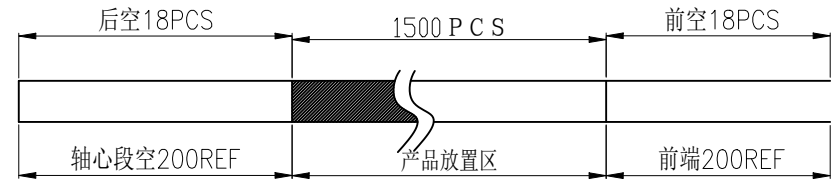
APPD: JM_Zheng
 CHKD: LYX
 DR: SGF

PJ. NO.:
 SIZE: A4 DRW NO.:

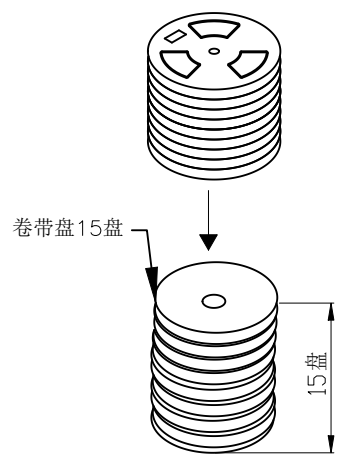
FINISH: SEE NOTES MAT'L: SEE NOTES
 SCALE: N/A REV.: A0 UNIT: mm PAGE: 1/2



包装示意图:



- 备注:
- 1.把上下载带送入载带机进行调整,然后将产品按照指定的方式摆入下载带中,开动卷带机进行卷装(每卷包1500PCS),卷装完成后需用上带缠绕最少20CM;
 - 2.在卷装OK的每卷盘面的指定位置上贴物料和RoHS标签装入纸箱内;每箱装15盘
 - 3.纸箱用封箱带将其封好,胶带要求工字型,不可遮住标签;
 - 4.如果客户对包装标签另有要求,请按客户要求作业;有未满足之零数箱需用缓冲材料填充;
 - 5.上载带剥离力:0.2-1.2N.;



将15盘产品放入纸箱内



名称	料号	用量/箱	规格
连接器		15.0KPCS	

THIS DOCUMENT IS THE SOLE PROPERTY OF BBJconn Technology Co.,Ltd. Corporation AND SHOULD NOT BE USED IN WHOLE OR IN PART WITHOUT PRIOR WRITTEN PERMISSION. PDWG:NO: 0851-1

深圳市步步精科技有限公司

NAME: TYPE-C 16P 母座 四脚插 端子SMT 舌片外漏0.85 沉板2.10 L=5.65 端子电镀IU 不锈钢外壳 PA46 编带

APPD: JM_Zheng

CHKD: LYX

DR: SGF

PJ. NO.:
SIZE: A4 | DRW NO.:
FINISH: SEE NOTES | MAT'L.: SEE NOTES
SCALE: N/A | REV.: AO | UNIT: mm | PAGE: 2/2