

| REV. | ECN NO. | CONTENT | DATE | ENGINEER |
|------|---------|-----------------|------|----------|
| A0 | | Initial release | / | LYL |

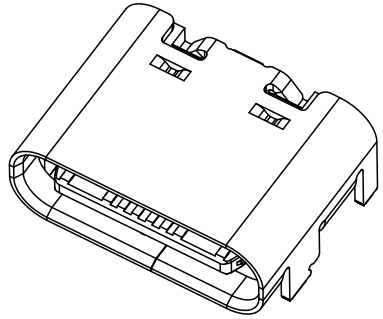
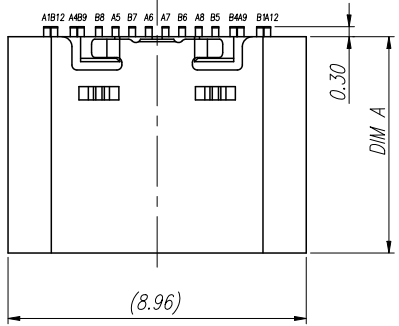
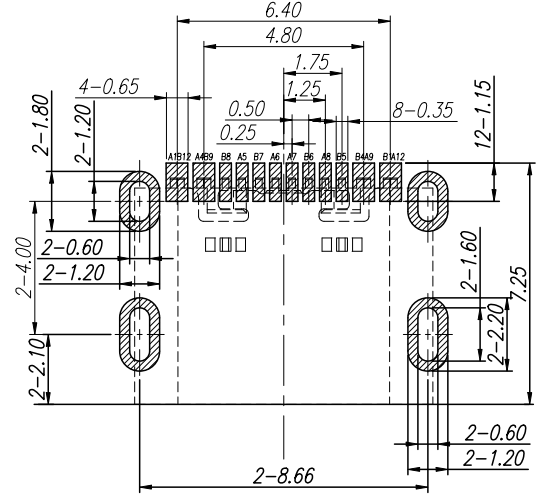
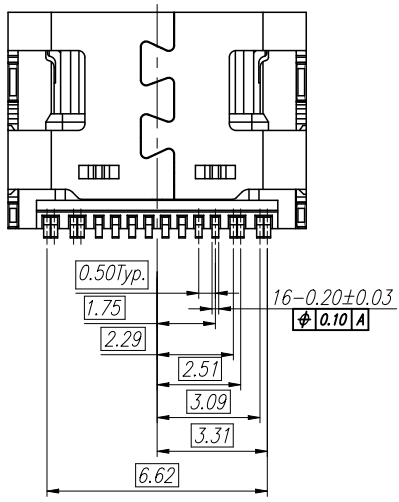
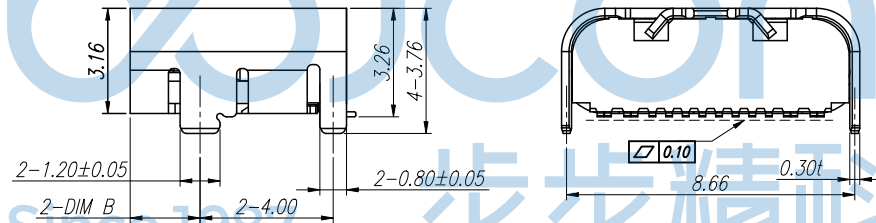
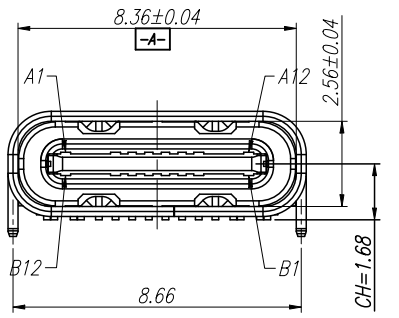


TABLE A

| DIM A | DIM B |
|-------|-------|
| 6.50 | 2.10 |
| 6.90 | 2.50 |

SPECIFICATION:

- 1.ELECTRICAL CHARACTERISTICS:
 - 1.1 CURRENT RATING: 7 A
 - 1.2 TEMPERATURE RANGE: -40 °C ~ 85 °C
 - 1.3 CONTACT RESISTANCE: 30 MILLIONHM MAX.
 - 1.4 DIELECTRIC WITHSTANDING VOLTAGE: 100 VAC r.m.s
 - 1.5 INSULATION RESISTNACE: 100 MEGOHMS MIN.
- 2.MECHANICAL CHARACTERISTICS
 - 2.1 INSERTION FORCE: 5~20N
 - 2.2 EXTRACTION FORCE: Initial:8~20N,ATER TEST 6~20N
 - 2.3 DURABILITY:10,000CYCLES
- 3THE SHELL LENTH IS LESS THAN THE MINIMUM SPECIFIED BY THE USB TYPE C STANDARD.AS SUCH IS CANNOT INDENOENDENTLY BE GUARANTEED TO MEET ALL TYPE C MECHANICAL REQUIREMENTS.



P.C.B LAYOUT VIEW TOLERANCE ±0.05

| PIN ASSIGNMENT | | | | | | | | | | | | BLADE | SHELL |
|----------------|------|------|------|------|----|----|------|------|------|------|-----|-------|-------|
| A1 | A2 | A3 | A4 | A5 | A6 | A7 | A8 | A9 | A10 | A11 | A12 | GND | GND |
| GND | TX1+ | TX1- | VBUS | CC1 | D+ | D- | SBU1 | VBUS | RX2- | RX2+ | GND | | |
| GND | RX1+ | RX1- | VBUS | SBU2 | D- | D+ | CC2 | VBUS | TX2- | TX2+ | GND | GND | GND |
| B12 | B11 | B10 | B9 | B8 | B7 | B6 | B5 | B4 | B3 | B2 | B1 | | |

| NO. | DESCRIPTION | QTY. | MATERIAL | FINISHED |
|-----|-------------|-------|--------------------|---|
| 5 | MID PLATE | 1 PCS | SUS301 T=0.15 | None |
| 4 | CONTACT 2 | 1 SET | C2680 T=0.15 | Ni 50~100u" Plated; After Au G/F Plated On Contact Area And Solder Area |
| 3 | CONTACT 1 | 1 SET | C2680 T=0.15 | |
| 2 | IM HOUSING | 1 PCS | PA46 BLACK UL94V-0 | None |
| 1 | SHELL | 1 PCS | SUS304 T=0.30 | Ni 50~120u" Plated |

THIS DOCUMENT IS THE SOLE PROPERTY OF **BBJconn Technology Co.,Ltd.** Corporation AND SHOULD NOT BE USED IN WHOLE OR IN PART WITHOUT PRIOR WRITTEN PERMISSION.

PDWG.NO: 0851-1

DR. LYL

APPD. JM_Zheng

CHKD. LYX

NAME: TYPE-C 16P 母座 板上四脚插 SMT 端子 C2680 镀金G-F PA46黑胶 L=6.50 CH=1.68 绑带 脚长0.5

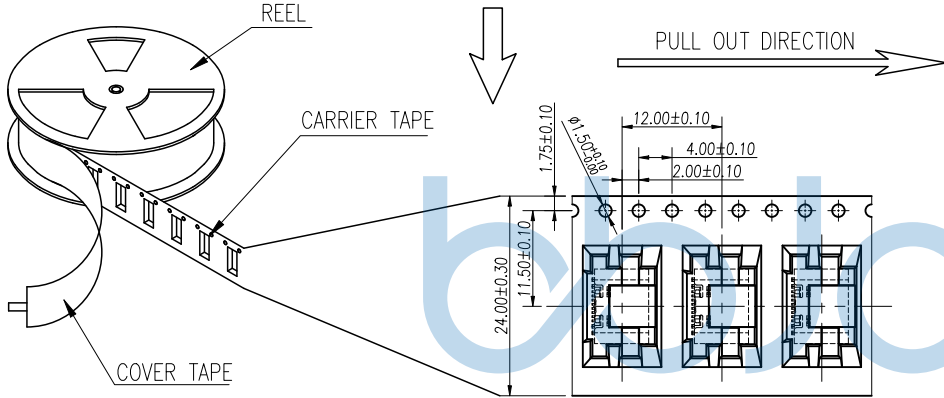
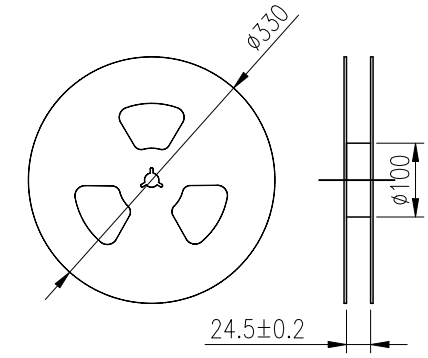
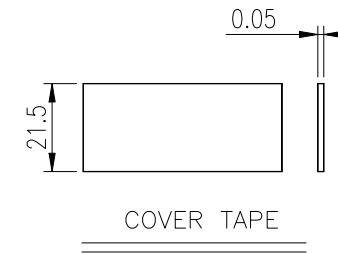
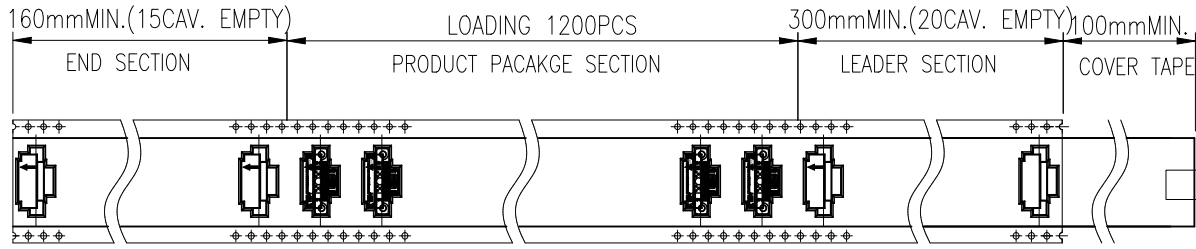
PJ. NO.: 126-221-160044-M3G

SIZE: A4 DRW NO.:

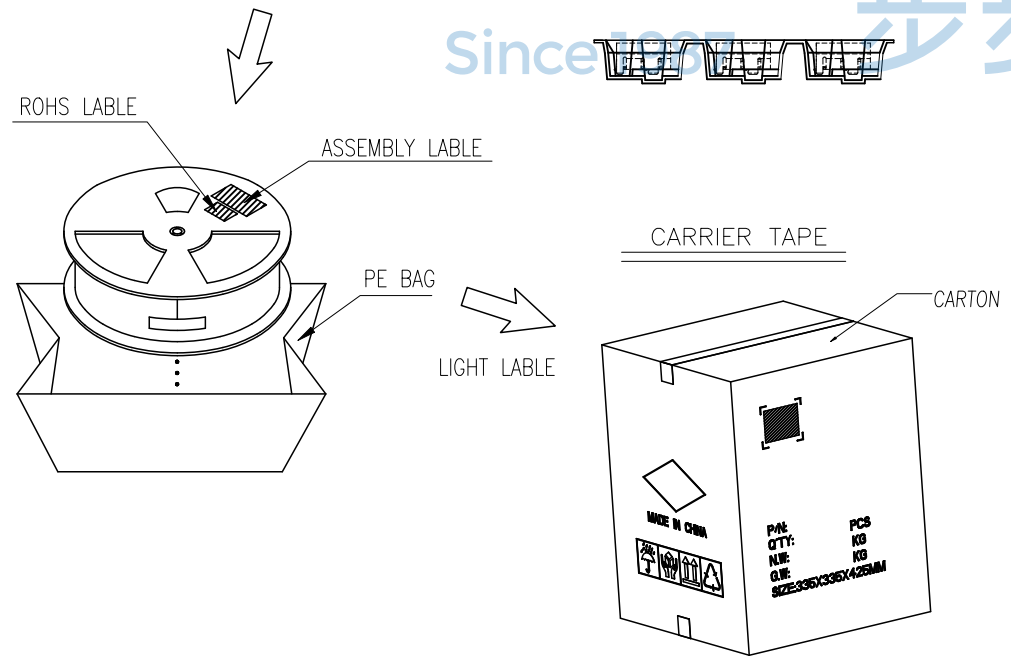
FINISH: SEE NOTES MAT'L.: SEE NOTES

SCALE: N/A REV.: AO UNIT: mm PAGE: 1/2

| REV. | ECN NO | CONTENT | DATE | ENGINEER |
|------|--------|-----------------|------|----------|
| AO | | Initial release | / | LYL |



- NOTES 2:
- MATERIAL:
 - REEL AND AXLE: PS,BLUE
 - CARRIER TAPE: PET, LUCID
 - COVER TAPE: PS,TRANSPARENT
 - SHIPPING CARTON: CORRUGATED FIBER
 - DIMENSION:
 - REEL: W=24.5, φA=330
 - CARRIER TAPE: T=0.30 W=24.0
 - COVER TAPE: T=0.05 W=21.5
 - SHIPPING CARTON: L=335mm, W=335mm, H=425mm
 - QUANTITY :
 - PRIMAY PACKING: 1200PCS/REEL
 - SECONARY PACKING: 12 REELS/CARTON(14400PCS/CARTON)
 - PEELING RESISTANCE: 0.1~1.3N
 - PEELING SPEED: 300mm/minutes
 - PEELING ANGLE: 165° ~180°



| | | | |
|--|--|---|--|
| THIS DOCUMENT IS THE SOLE PROPERTY OF BBJconn Technology Co.,Ltd. Corporation AND SHOULD NOT BE USED IN WHOLE OR IN PART WITHOUT PRIOR WRITTEN PERMISSION. | | 深圳市步步精科技有限公司 | |
| P/N: .X: ±0.38 .XX: ±0.25 .XXX: ±0.13 | | NAME: TYPE-C 16P 母座 板上四脚插 SMT 端子 C2680 镀金G-F PA46黑胶 L=6.50 CH=1.68 编带 脚长0.5 | |
| APPD. JM_Zheng | | P.J. NO.: 126-221-160044-M3G | |
| CHKD. LYX | | SIZE: A4 DRW NO.: | |
| PDWG.NO: 0851-1 | | FINISH: SEE NOTES MAT'L.: SEE NOTES | |
| DR. LYL | | SCALE: N/A REV.: AO UNIT: mm PAGE: 2/2 | |