

REV.	ECN NO	CONTENT	DATE	ENGINEER
A0		Initial release	/	GZY

NOTES:

1.MATERIAL:

MOLDING: LCP UL94 V-0

CONTACT: COPPER ALLOY.

PLATED GOLD ON CONTACT AREA,
G/F GOLD ON SOLDER AREA,
50u" NICKEL PLATING OVER ALL.

OUTER SHELL: SUS304,T=0.20±0.03mm
50u" NICKEL PLATING OVER ALL.

INNER SHELL: SUS304,T=0.20±0.03mm

EMI SHILD: SUS304-H,T=0.12±0.03mm

LATCH: SUS301,T=0.15±0.03mm

2.MECHANICAL:

INSERTION: 5~20N.

EXTRACTION: 8~20N.

DURABILITY: 10000 CYCLES

3.ELECTRICAL:

CURRENT: 5A MAX FOR VBUS;

1.25A FOR GND,0.25A FOR OTHER OTHER.

VOLTAGE: 20VDC MAX

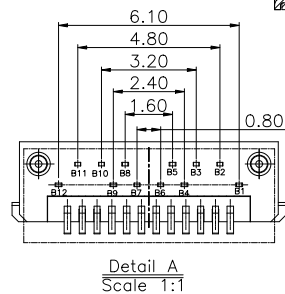
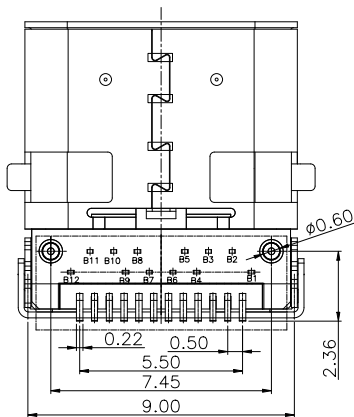
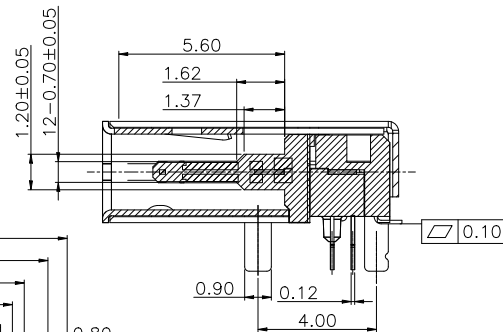
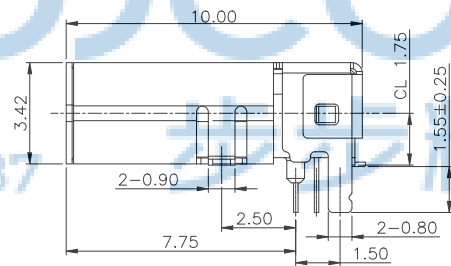
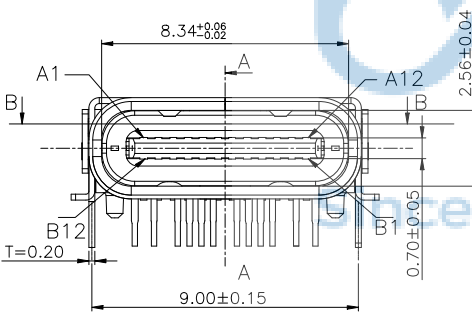
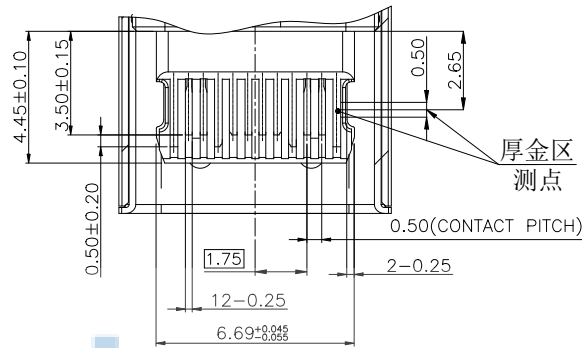
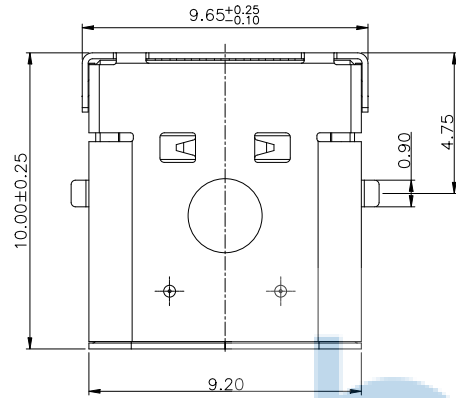
WITHSTANDING VOLTAGE: 100V AC.

CONTACT RESISTANCE: 40mΩ MAX.

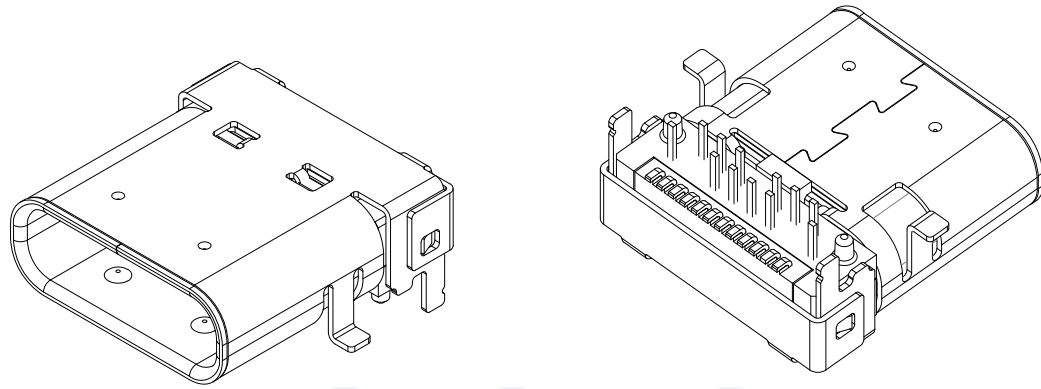
INSULATION RESISTANCE: 100MΩ MIN.

4.ENVIRONMENTAL

TEMPERATURE RANGE -40°C ~ +85°C

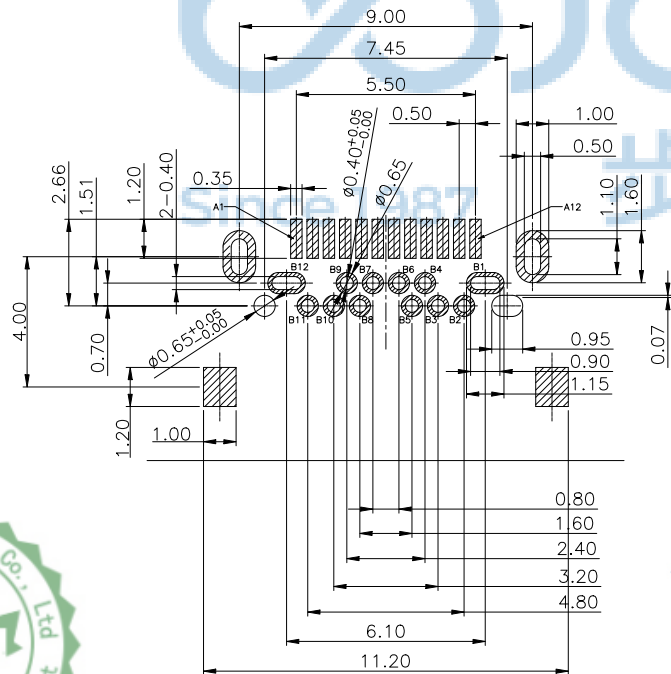


THIS DOCUMENT IS THE SOLE PROPERTY OF BBJconn Technology Co., Ltd. Corporation AND SHOULD NOT BE USED IN WHOLE OR IN PART WITHOUT PRIOR WRITTEN PERMISSION.		深圳市步步精科技有限公司	
APPD.	JM_Zheng	NAME:	TYPE-C 母座 24P 板上型 双壳 外壳前两脚SMT后两脚DIP 端子DIP+SMT L=10.0 带柱 端子SMT加长0.30 镀金IU 不锈钢外壳 LCP黑胶 编带
CHKD.	LYX	PJ. NO.:	126-223-240037-T7G
DR.	GZY	SIZE:	A4 DRW NO.:
PDWG.NO:	0228-1	FINISH:	SEE NOTES
		MAT'L.:	SEE NOTES
		SCALE:	N/A
		REV.:	A0
		UNIT:	mm
		PAGE:	1/4



USB TYPE-C FULL-FEATURED RECEPTACLE INTERFACE PIN ASSIGNMENTS

PIN	Signal Name	Description	PIN	Signal Name	Description
A1	GND	Ground return	B12	GND	Ground return
A2	SSTXp1	Positive half of first SuperSpeed TX differential pair	B11	SSRXp1	Positive half of first SuperSpeed RX differential pair
A3	SSTXn1	Negative half of first SuperSpeed TX differential pair	B10	SSRXn1	Negative half of first SuperSpeed RX differential pair
A4	VBUS	Bus Power	B9	VBUS	Bus Power
A5	CC1	Configuration Channel	B8	SBU2	Sideband Use (SBU)
A6	Dp1	Positive half of the USB 2.0 differential pair-Position 1	B7	Dn2	Negative half of the USB 2.0 differential pair-Position 2
A7	Dn1	Negative half of the USB 2.0 differential pair-Position 1	B6	Dp2	Positive half of the USB 2.0 differential pair-Position 2
A8	SBU1	Sideband Use (SBU)	B5	CC2	Configuraation Channel
A9	VBUS	Bus Power	B4	VBUS	Bus Power
A10	SSRXn2	Negative half of second SuperSpeed RX differential pair	B3	SSTXn2	Negative half of second SuperSpeed TX differential pair
A11	SSRXp2	Positive half of second SuperSpeed RX differential pair	B2	SSTXp2	Positive half of second SuperSpeed TX differential pair
A12	GND	Ground return	B1	GND	Ground return



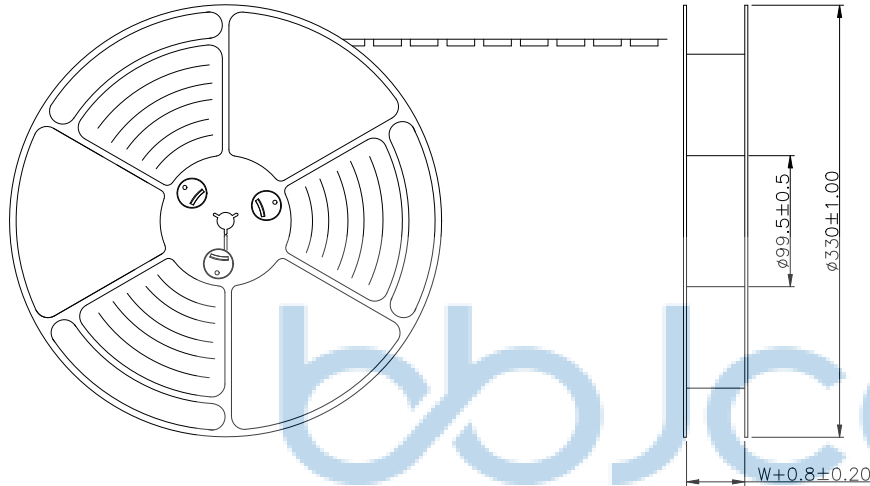
RECOMMEND P.C.B LAYOUT(COMPONENT SIDE)
TOLERANCE FOR PCB LAYOUT IS ± 0.05



THIS DOCUMENT IS THE SOLE PROPERTY OF BBJconn Technology Co., Ltd. Corporation AND SHOULD NOT BE USED IN WHOLE OR IN PART WITHOUT PRIOR WRITTEN PERMISSION.		深圳市步步精科技有限公司 工程管理部	
PDWG.NO: 0228-1	APPD. JM_Zheng	NAME: TYPE-C 母座 24P 板上型 双壳 外壳前两脚SMT后两脚DIP 端子DIP+SMT L=10.0 带柱 端子SMT加长0.30 镀金IU 不锈钢外壳 LCP黑胶 编带	PJ. NO.: 126-223-240037-T7G
DR. GZY	CHKD. LYX	FINISH: SEE NOTES	MAT'L.: SEE NOTES
		SCALE: N/A	REV.: A0 UNIT: mm PAGE: 2/4

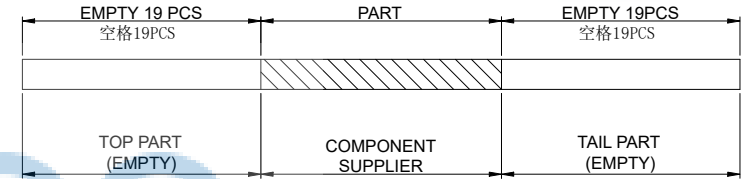
REV.	ECN NO.	CONTENT	DATE	ENGINEER
A0		Initial release	/	GZY

出料方向
PULL OUT DIRECTEON



NOTES

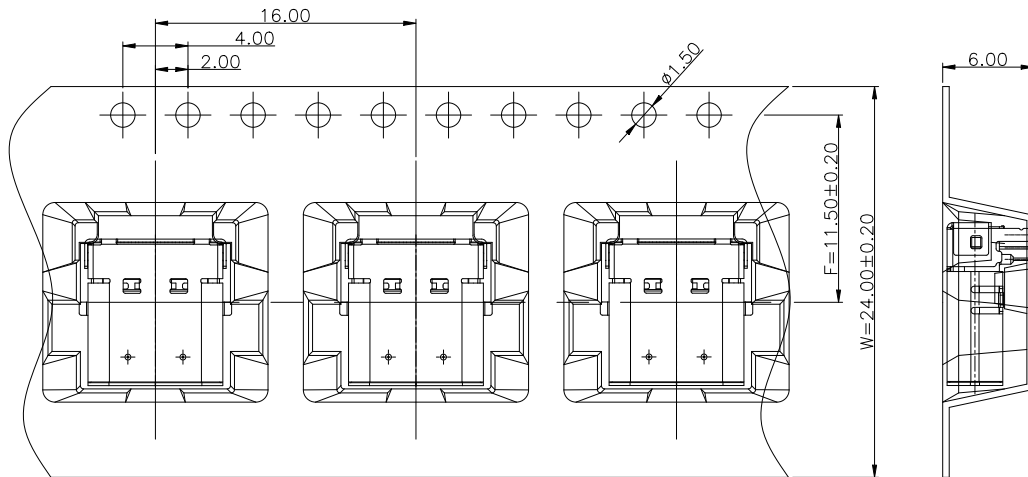
- 帶子引導長度
LEAD TAPE LENGTH
出料方向
PULL OUT DIRECTEON



- 出貨運輸過程中一定注意：
THIS REQUIREMENT SHOULD BE APPLIED AT SHIPMENT：
卷帶在運輸過程中不能散開
PEELING OFF SHOULD NOT BE ALLOWED DURING TRANSPORTATION

Since 1987

步步精科技



THIS DOCUMENT IS THE SOLE PROPERTY OF BBJconn Technology Co., Ltd. Corporation AND SHOULD NOT BE USED IN WHOLE OR IN PART WITHOUT PRIOR WRITTEN PERMISSION.		深圳市步步精科技有限公司 .X: ±0.38 X': ±3" .XX: ±0.25 .X': ±2" .XXX: ±0.13 .XX': ±1"		NAME: TYPE-C 母座 24P 板上型 双壳 外壳前两脚SMT后两脚DIP 端子DIP-SMT L=10.0 带柱 端子SMT加长0.30 镀金1U 不锈钢外壳 LCP黑胶 编带		
APPD.	JM_Zheng	P.J. NO.: 126-223-240037-T7G SIZE: A4 DRW NO.:	FINISH: SEE NOTES MAT'L.: SEE NOTES			
CHKD.	LYX		SCALE: N/A	REV.: A0	UNIT: mm	PAGE: 3/4
PDWG.NO:	0228-1	DR.	GZY			



REV.	ECN NO.	CONTENT	DATE	ENGINEER
A0		Initial release	/	GZY

Label pasting location (facing the back of the circular hole on the roll)

标签粘贴处 (朝卷带圆孔反面)

Location of label sticking (label

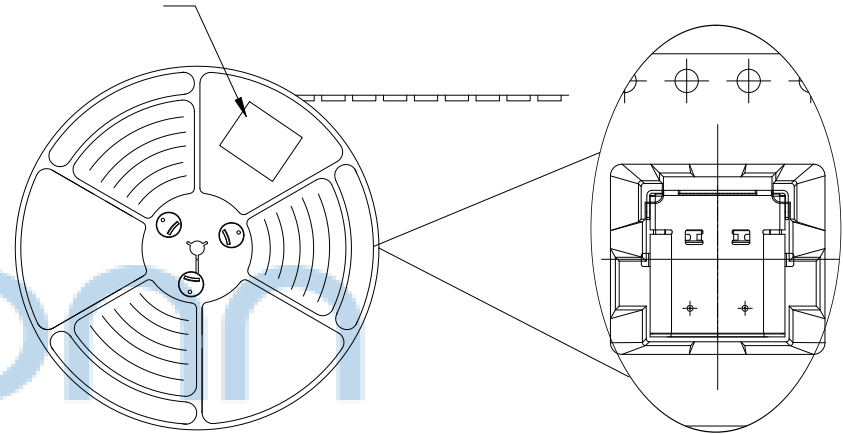
干燥剂
Desiccant

包装盘
Tape Reel

防水袋
waterproof plastic bag

防撞三角柱 (4Pcs)
carton

纸箱
Cartons



一盘700PCS, 10卷每箱

NOTE:

1. 每捲包裝數量及每箱裝箱數量如左下表格。

Packing q'ty of each reel & carton as below table shown.

2. 以上膠帶覆蓋下包裝帶經包裝冷封方式封口

The above tape under the cover of the package by the package of cold-sealed way sealed.

3. 將裝滿產品的卷盤放入紙箱並以膠帶封口

Put reels in the carton and use adhesive tape to seal up.



THIS DOCUMENT IS THE SOLE PROPERTY OF BBJconn Technology Co., Ltd. Corporation AND SHOULD NOT BE USED IN WHOLE OR IN PART WITHOUT PRIOR WRITTEN PERMISSION.		深圳市步步精科技有限公司 工程部	
.X: ±0.38 .XX: ±0.25 .XXX: ±0.13		X': ±3" .X': ±2" .XX': ±1"	
APPD.	JM_Zheng	NAME: TYPE-C 母座 24P 板上型 双壳 外壳前两脚SMT后两脚DIP 端子DIP+SMT L=10.0 带柱 端子SMT加长0.30 镀金IU 不锈钢外壳 LCP黑胶 编带	
CHKD.	LYX	P.J. NO.: 126-223-240037-T7G	
PDWG.NO:	0228-1	SIZE: A4 DRW NO.:	
DR.	GZY	FINISH: SEE NOTES MAT'L.: SEE NOTES	
		SCALE: N/A REV.: A0 UNIT: mm PAGE: 4/4	