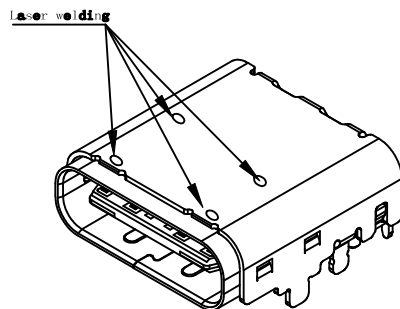
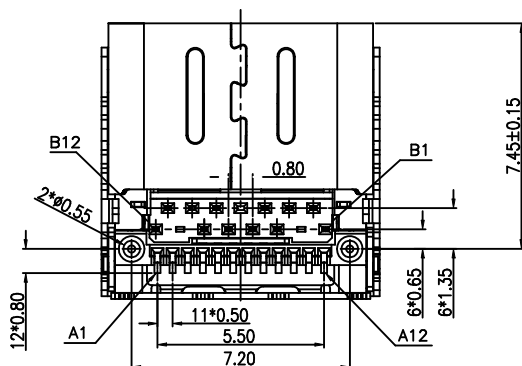
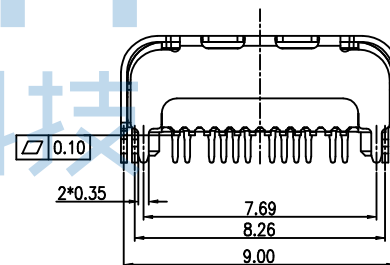
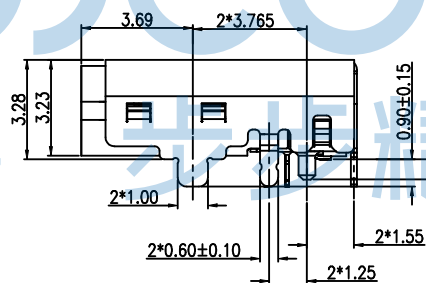
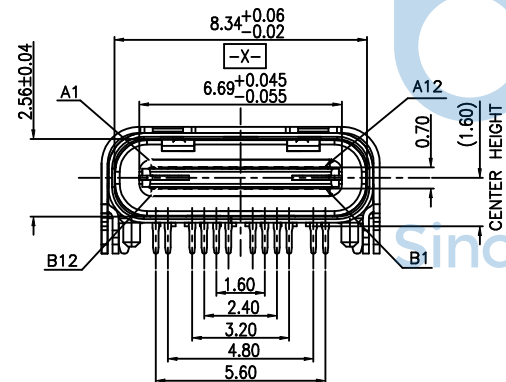
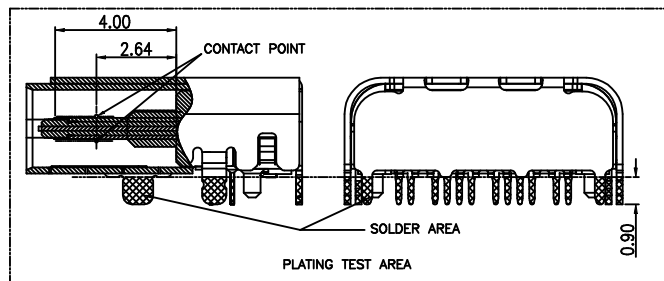
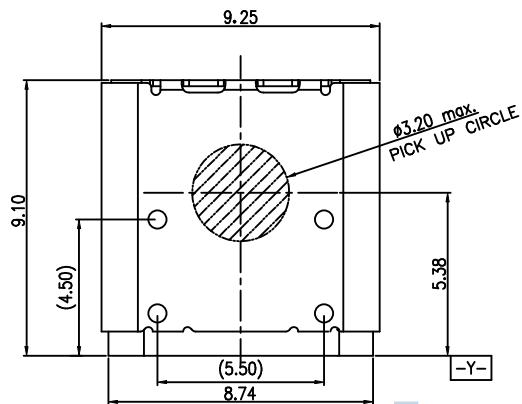


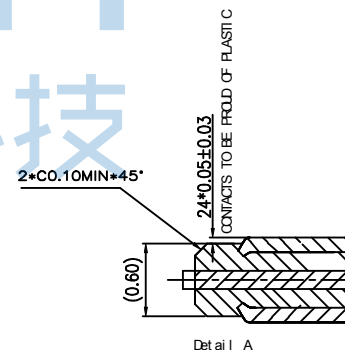
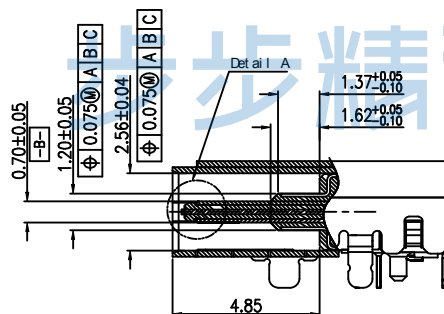
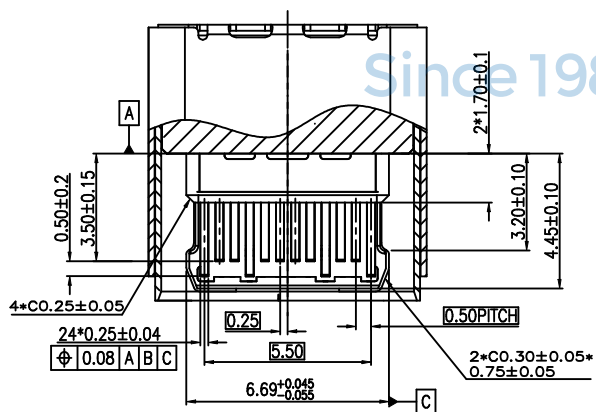
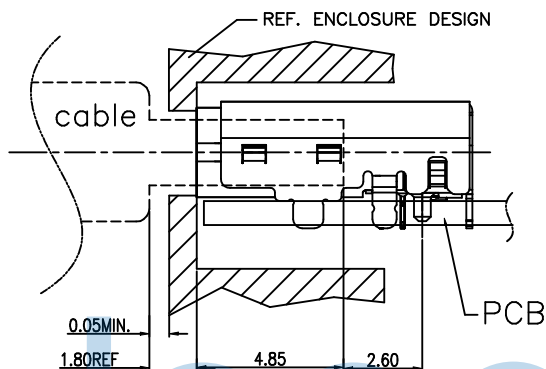
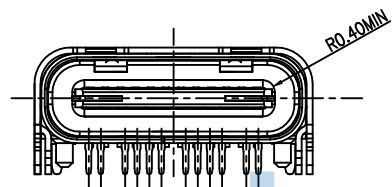
REV.	ECN NO.	CONTENT	DATE	ENGINEER
AO		Initial Release	/	LHC

NOTES:

- ELECTRICAL CHARACTERISTICS :
  - CONTACT CURRENT RATING:  
5.0 A FOR VBUS PIN AND ITS CORRESPONDING GND PIN.  
0.25 A MIN FOR ALL OTHER CONTACTS.
  - CONTACT RESISTANCE: INITIAL 40 mΩ Max.  
AFTER 50 mΩ Max.
  - DIELECTRIC WITHSTANDING VOLTAGE : 100 VRMS AC MIN.
  - INSULATION RESISTANCE: 100 MEGOHMS MIN.
- MECHANICAL CHARACTERISTICS:
  - CONNECTOR INSERTION FORCE: 5~20N.  
AT A MAXIMUM RATE OF 12.5MM PER SECOND.
  - CONNECTOR EXTRACTION FORCE: 8~20N FORM 1000 CYCLES  
6~20N FORM 1000 to 10000 CYCLES
  - DURABILITY: 10000 CYCLES.
  - OPERATING TEMPERATURE: -55°C TO +85°C
- DIMENSIONS ARE IN MILLIMETERS, BRACKETED DIMENSIONS ARE INCHES EQUIVALENTS.
- RECOMMENDED PROCESS: IR REFLOW 260°C, 10 SECONDS.
- THE CONNECTOR IS ROHS COMPLIANT.



THIS DOCUMENT IS THE SOLE PROPERTY OF BBJconn Technology Co.,Ltd. Corporation AND SHOULD NOT BE USED IN WHOLE OR IN PART WITHOUT PRIOR WRITTEN PERMISSION.		深圳市步步精科技有限公司 .X: ±0.38    .X': ±3" .XX: ±0.25    .X'': ±2" .XXX: ±0.13    .X''': ±1"		NAME: TYPE-C 24P 母座 L=9.10 CH=1.60 脚长0.9 板上六脚插 带柱 双壳 端子SMT+DIP	
APPD.	JM_Zheng	PJ. NO.: 126-223-240001-J6G SIZE: A4   DRW NO.:		FINISH: SEE NOTES    MAT'L.: SEE NOTES	
CHKD.	LYX	SCALE: N/A		REV.: AO	UNIT: mm
PDWG.NO:	0469-2	DR.	LHC	PAGE: 1/4	



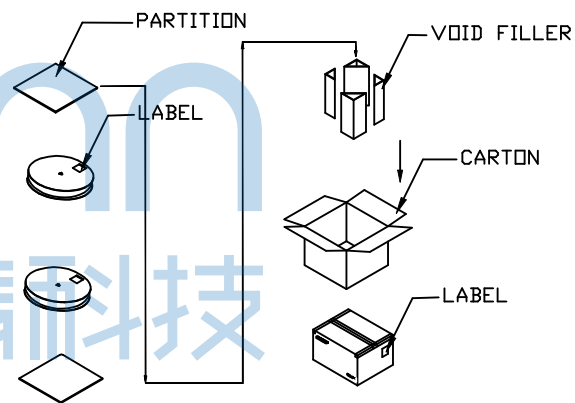
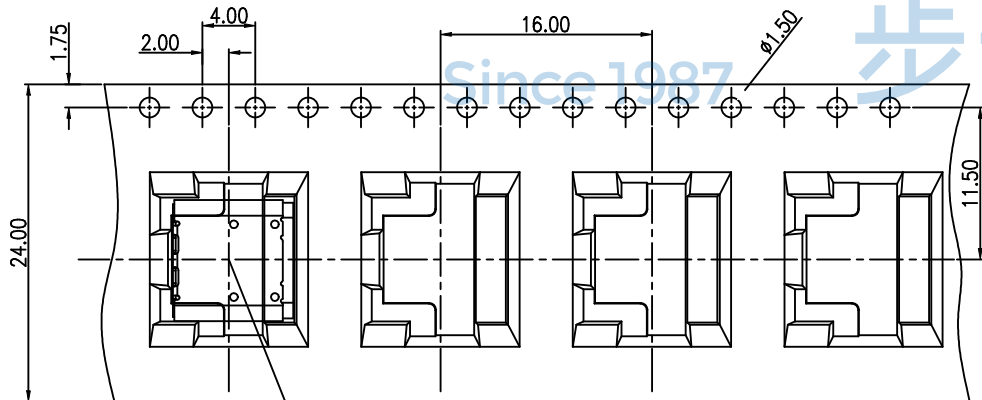
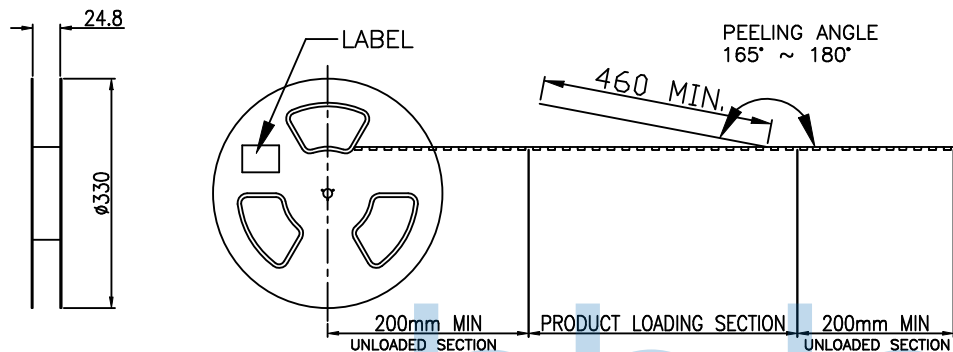
THIS DOCUMENT IS THE SOLE PROPERTY OF BBJconn Technology Co., Ltd. CORPORATION AND SHOULD NOT BE USED IN WHOLE OR IN PART WITHOUT PRIOR WRITTEN PERMISSION.  
PDWG.NO: 0469-2

深圳市步步精科技有限公司	
.X: ±0.38 .XX: ±0.25 .XXX: ±0.13	X': ±3" X'': ±2" X'X': ±1"
APPD. JM_Zheng CHKD. LYX DR. LHC	NAME: TYPE-C 24P 母座 L=9.10 CH=1.60 脚长0.9 板上六脚插 带柱 双壳 端子SMT+DIP PJ. NO.: 126-223-240001-J6G SIZE: A4 DRW NO.: FINISH: SEE NOTES MAT'L.: SEE NOTES SCALE: N/A REV.: AO UNIT: mm PAGE: 2/4



REV.	ECN NO.	CONTENT	DATE	ENGINEER
AO		Initial Release	/	LHC

- NOTES :
- MATERIAL :  
COVER TAPE : P.S T=0.05mm  
CARRIER TAPE : P.S T=0.40mm  
CARTON: CORRUGATED FIBER
  - DIMENSION :  
REEL : SEE DRAWING  
SHIPPING BOX: 350X350X300mm
  - QUANTITY : SEE TABLE
  - PEELING RESISTANCE : 10gf~130gf (for 12~56mm)
  - PEELING SPEED : 300mm/MINUTES



800	9	7200
PCS/REEL	REEL/BOX	TOTAL Q'TY

THIS DOCUMENT IS THE SOLE PROPERTY OF BBJconn Technology Co.,Ltd. Corporation AND SHOULD NOT BE USED IN WHOLE OR IN PART WITHOUT PRIOR WRITTEN PERMISSION.		深圳市步步精科技有限公司 .X: $\pm 0.38$ .X': $\pm 3'$ .XX: $\pm 0.25$ .X': $\pm 2'$ .XXX: $\pm 0.13$ .XX': $\pm 1'$		NAME: TYPE-C 24P 母座 L=9.10 CH=1.60 脚长0.9 板上六脚插 带柱 双壳 端子SMT+DIP	
APPD.	JM_Zheng	PJ. NO.: 126-223-240001-J6G SIZE: A4 DRW NO.:	FINISH: SEE NOTES    MAT'L.: SEE NOTES		
CHKD.	LYX		SCALE: N/A    REV.: AO    UNIT: mm    PAGE: 4/4		
PDWG.NO:	0469-2	DR.	LHC		