

1. 电气性能

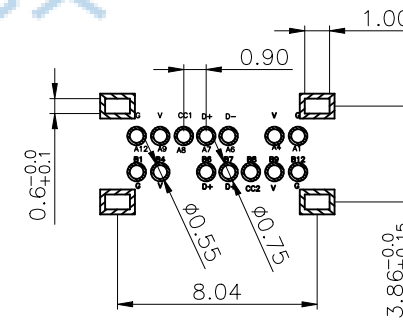
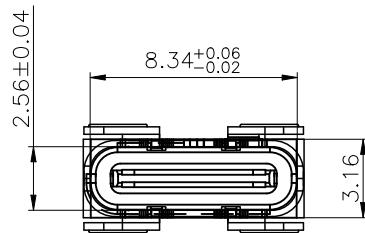
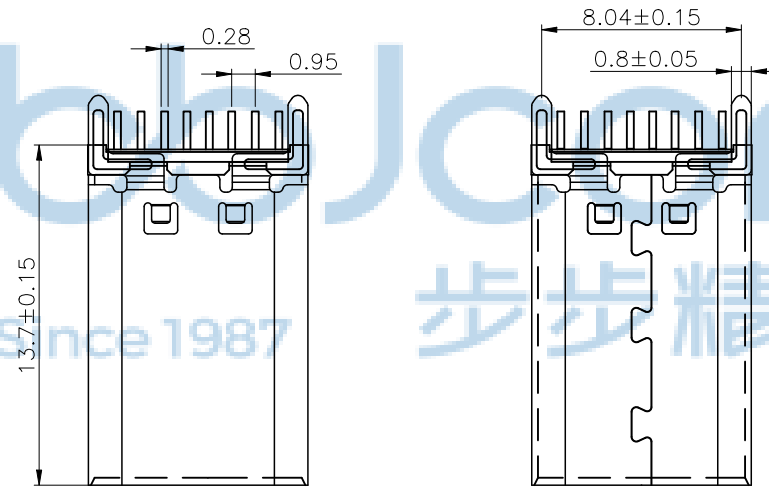
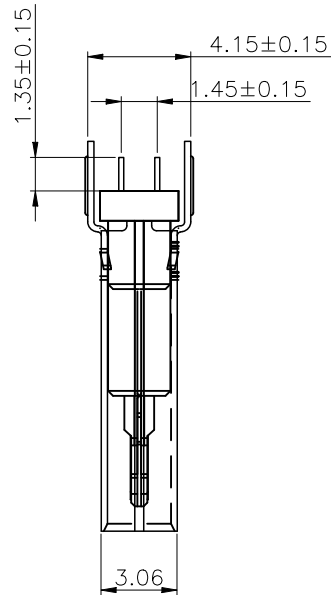
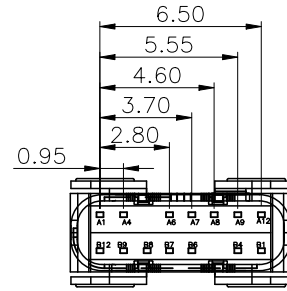
- 1.1. 额定电流 3A
- 1.2. 额定电压: 5V.
- 1.2. 耐电压: 150 V(AC) for 1 min.
- 1.3. 接触阻抗: 40mΩ Max.
可靠性测试后阻抗变化不得超过10mΩ.
- 1.4. 绝缘阻抗: 10 MΩMin.

2. 机械性能

- 2.1 插入力: 5-20N. 拔出力: 6-20N.
- 2.2 寿命测试 10000 Max.

3. 材料要求

- 4.1 胶芯材料: LCP
- 4.2 外壳材料: SUS201
- 4.3 端子材料: C2680
- 4. 盐雾要求: 24H(外壳)
- 5. 工作温度: -20° C~85° C
- 6. 端子四周镀镍30-50U", 镀金区域镀半金镀1U"
- 7. 201外壳四周镀镍50-80U"



P.C.B LAYOUT

USB TYPE-C 16PIN PIN ASSIGNMENTS

PIN NUMBER	A1	A2	A3	A4	A5	A6	A7	A8	A9	A10	A11	A12
SIGNAL NAME	GND			Vbus	CC1	Dp1	Dn1		Vbus			GND
PIN NUMBER	B12	B11	B10	B9	B8	B7	B6	B5	B4	B3	B2	B1
SIGNAL NAME	GND			Vbus		Dn2	Dp2	CC2	Vbus			GND

THIS DOCUMENT IS THE
SOLE PROPERTY OF
BBJconn Technology Co.,Ltd.
Corporation AND SHOULD
NOT BE USED IN WHOLE
PRIOR WRITTEN PERMISSION.

深圳市步步精科技有限公司

.X: ±0.38 X': ±3"
.XX: ±0.25 .X': ±2"
.XXX: ±0.13 .XX': ±1"

NAME: TYPE-C 14P 母座 直立式 四脚插 H=13.7
端子DIP 不锈钢外壳 LCP黑胶 编带

APPD JM_Zheng

PJ NO: 126-225-14001-H8G

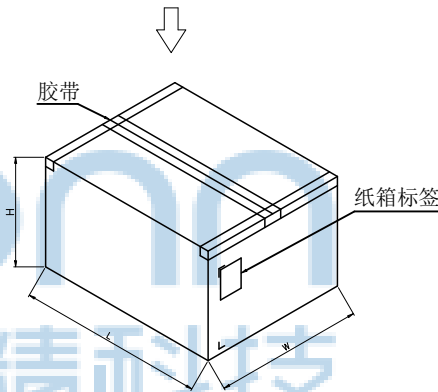
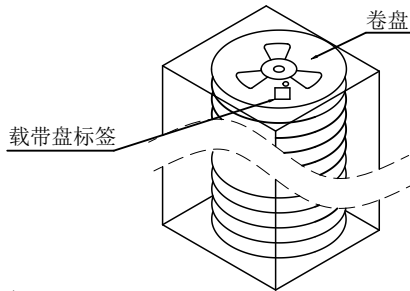
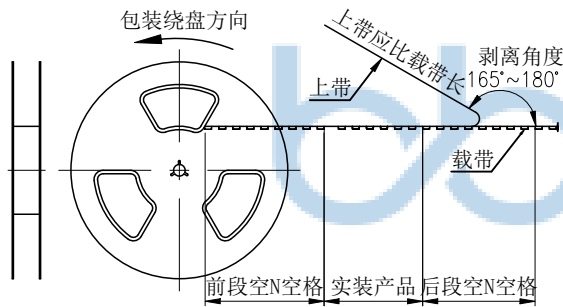
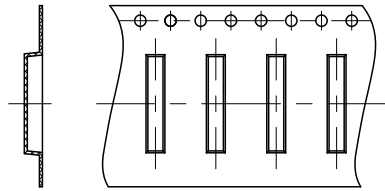
CHKD LYX

SIZE:A4 DRW NO:

PDWG NO: 0482-1

FINISH:SEE NOTES MAT'L:SEE NOTES
SCALE:N/A REV:A0 UNIT:mm PAGE:1/2

DR SGF



纸箱规格: W390*L390*H315MM



备注:

- 1、包装数量: 400/PCS/卷, 10卷/箱。
- 2、包装袋长度: 每卷前后各空10-20个空格, 中间包装。
- 3、材质:
载体: 聚丙烯 (PS), 阻抗 $10^{6-9} \Omega$
上带: 聚乙烯 (PET), 阻抗 $10^{6-11} \Omega$
卷盘: 聚苯乙烯。

THIS DOCUMENT IS THE SOLE PROPERTY OF BBJconn Technology Co.,Ltd. Corporation AND SHOULD NOT BE USED IN WHOLE PRIOR WRITTEN PERMISSION.	.X: ± 0.38 .XX: ± 0.25 .XXX: ± 0.13		X': $\pm 3'$.X': $\pm 2'$.XX': $\pm 1'$		深圳市步步精科技有限公司 NAME: TYPE-C 14P 母座 直立式 四脚插 H=13.7 端子DIP 不锈钢外壳 LCP黑胶 编带			
	APPD	JM_Zheng		PJ NO: 126-225-14001-H8G SIZE:A4 DRW NO:	FINISH:SEE NOTES		MAT'L:SEE NOTES	
CHKD	LYX		DR		SGF	SCALE:N/A	REV:A0	UNIT:mm
PDWG NO: 0482-1								