



REV.	DESCRIPTION	NAME	DATE
A	NEWS ISSUE		

特性:

- 一、电气性能: ELECTRICAL
1. 额定电流: 5.0A
  2. 接触阻抗: 40 MILLIOHMS MAX
  3. 耐电压: 150V AC / 1 mA MAX
  4. 绝缘阻抗: 150V DC/100 MEGA OHMS MIN

二、机械性能:

1. 插入力: 5~20N
2. 拨出力: 8~20N
3. 使用寿命: 10000次、拨出力 5N MIN

三、材料: MATERIAL

1. 塑胶: LCP UL94V-0
2. 端子: C7025 T=0.15MM
3. 外壳: SUS304 T=0.30MM
4. 卡勾: SUS304 T=0.15MM

四、电镀: FINISH

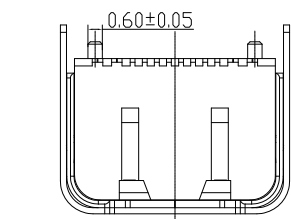
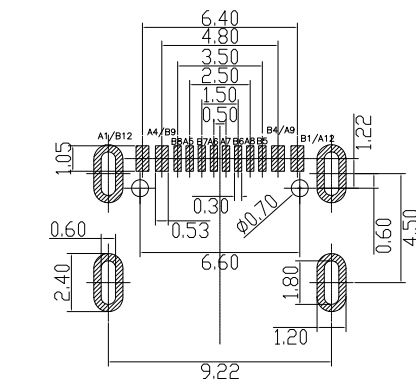
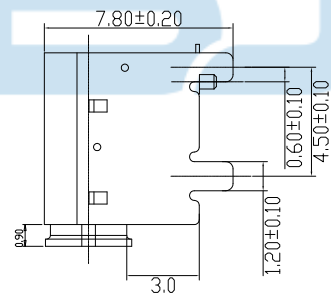
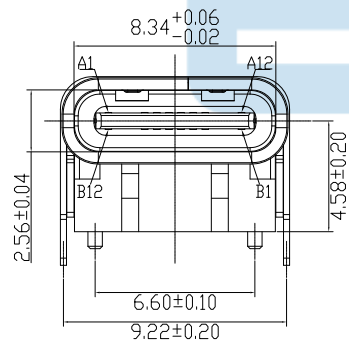
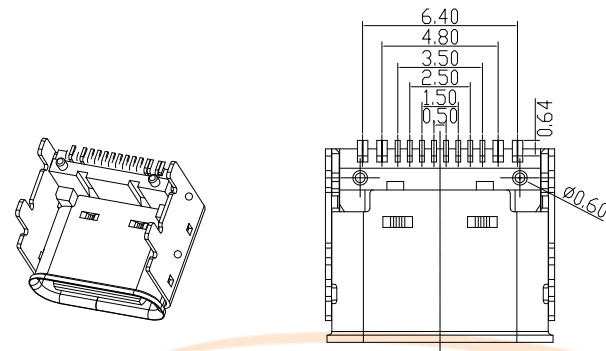
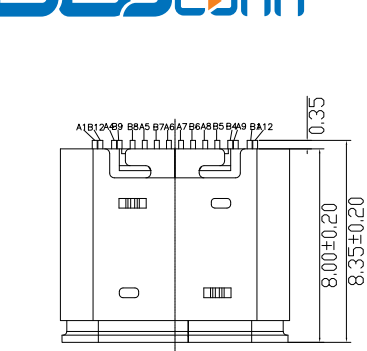
1. 端子: 接触点镀金1U"MIN  
PIN脚焊接区域镀金1U"MIN.
2. 外壳: 镀镍50U"MIN (盐雾48H)

五、电镀品需做粘锡测试: 粘锡面积达到95%以上。

六、SMT回流焊 (峰值260° C±5° C) 不能起泡、熔胶、变色不良 (变形在公差范围以内)

七、工作温度: -30° C~+80° C

八、盐雾测试: 通过24H在浓度为5±1%盐水的盐雾测试无生锈现象



TOLERANCE UNSPECIFIED

.0	±0.35
.00	±0.25
.000	±0.15
X.*	±2.00*

CUSTOMER DRAWING

PIN NUMBER	A1	A2	A3	A4	A5	A6	A7	A8	A9	A10	A11	A12
SIGNAL NAME	GND	/	/	V <sub>bus</sub>	CC1	Dp1	Dn1	SBU1	V <sub>bus</sub>	/	/	GND
PIN NUMBER	B12	B11	B10	B9	B8	B7	B6	B5	B4	B3	B2	B1
SIGNAL NAME	GND	/	/	V <sub>bus</sub>	SBU2	Dn2	Dp2	CC2	V <sub>bus</sub>	/	/	GND



深圳市步步精科技有限公司

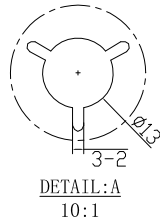
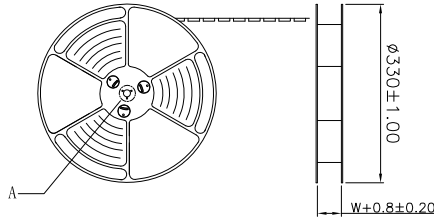
TITLE: TYPE-C 16P 母座 板上四脚插 L=8.0 SMT 垫高3.0mm CH4.58mm 带柱 双外壳

DRAWN/ DATE	设计 HMY	SIZE: A4	UNIT: MM	PART. NO:	UC.01.51-1W-0007
CHECKED/ DATE	审核 LYX	SCALE: 1:1	PROJECTION		REV.: 版本
APPROVED/ DATE	核准 LJP	DWG. PATH	0482-1	SHEET: 页码	

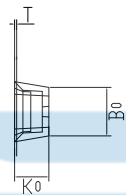
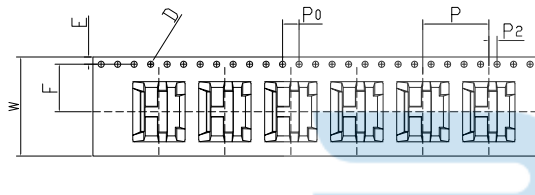
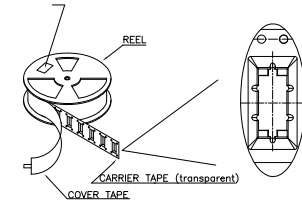
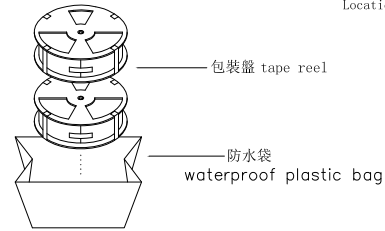
RECOMMENDED P.C.B. LAYOUT (T:1.00mm)  
TOLERANCE UNSPECIFIED ±0.05mm



出料方向  
PULL OUT DIRECTEON

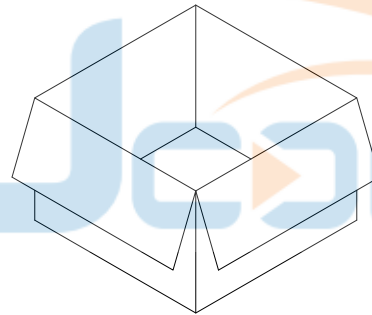
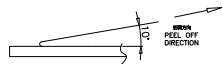


(at small positioning hole of the carrier tape side).  
標簽黏貼處 (朝捲裝包材的小定位孔一側)  
Location of label sticking (label)



NOTES

1. 帶子引導長度  
LEAD TAPE LENGTH  
出料方向  
PULL OUT DIRECTEON



NOTE:

1. 每捲包裝數量及每箱裝箱數量如左下表格。  
Packing q'ty of each reel & carton as below table shown.
2. 將裝滿產品的卷盤放入紙箱並以膠帶封口  
Put reels in the carton and use adhesive tape to seal up.

紙箱: 345mmX345mmX295mm

W	24.00±0.3
A0	8.30±0.1
B0	11.80±0.1
K0	8.30±0.1
P	16.00±0.1
F	11.50±0.1
E	1.75±0.1
D0	1.50±0.1
P0	4.00±0.1
P2	2.00±0.1
T	0.50±0.05

技术要求:

1. 圆孔十个孔距离累计允许公差为±0.20mm.
2. 带长250mm内容许弯曲度1mm.
3. A0/B0尺寸由槽底0.30mm高处定义之.
4. K0尺寸由槽底内表面处至成型上表面处定义之.
5. 所有尺寸定义依循EIA-481-C系准则定义之.
6. 材料: PET材质.
7. 材料厚度: 0.35±0.05MM.
8. 13"单卷可装长度: Meter
9. 13"单卷可装颗数: +24 psc (前后共空24格).
10. 未注明拔模斜度为5°.
11. 重点检验尺寸代号: W、P0、P、P2、E、F、T、A0、B0、K0.



卷带	规格: Ø330mm	包装数量: 500PCS
纸箱	规格: 345mmX345mmX310mm	包装数量: 10盘(5000PCS)

TOLERANCE UNSPECIFIED		深圳市步步精科技有限公司 TITLE: TYPE-C 16P 母座 板上四脚插 L=8.0 SMT 垫高3.0mm CH4.58mm 带柱 双外壳	
·0	±0.35	SIZE:A4	UNIT:MM.
·00	±0.25	PART. NO:	UC.01.51-1W-0007
·000	±0.15	SCALE: 1:1	PROJECTION
X. °	±2.00°	DWG. PATH	0482-1
CUSTOMER DRAWING		REV.:	版本
DRAWN/ DATE	设计 HMY	SHEET:	页码
CHECKED/ DATE	审核 LYX		
APPROVED/ DATE	核准 LJP		