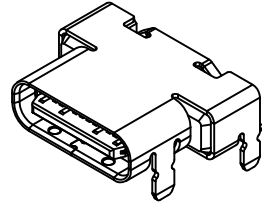
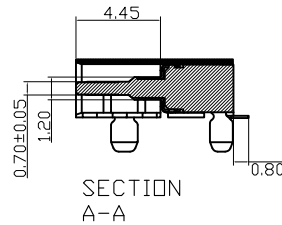
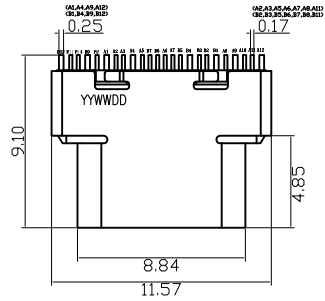




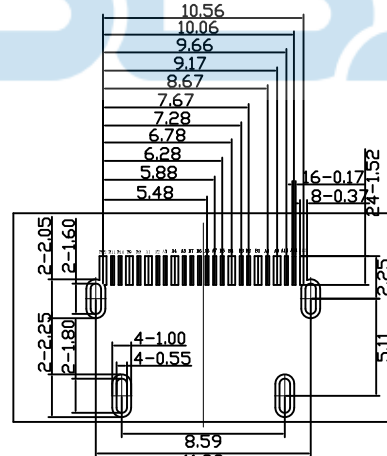
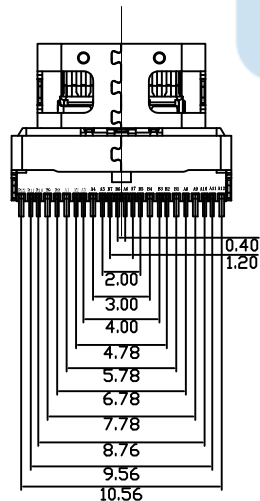
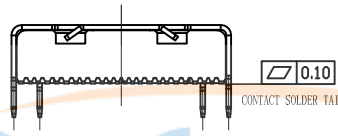
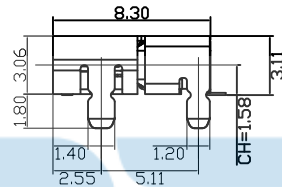
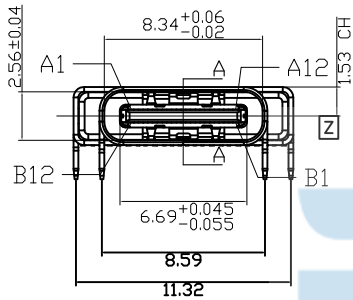
| REV. | DESCRIPTION | NAME | DATE |
|------|-------------|------|------|
| A | NEWS ISSUE | | |



NOTES:

- Operating condition: Temperature -40°C ~ +85°C; Humidity 80% R.H MAX
- MECHANICAL PERFORMANCE
 - Insertion Force: 5-20N.
 - Withdrawal Force: 8-20N. 1-1000 CYCLES
6-20N 1001-10000 CYCLES
 - Durability: 10000 Cycles Min.
- ELECTRICAL PERFORMANCE:
 - Rated voltage: AC 20V RMS
 - Rated current: 1.25A FOR (A1, A4, A9, A12, B1, B4, B9, B12)
0.25A FOR OTHER PER PIN
 - Contact Resistance: 40mΩ MAX

4. PLEASE CONTACT LINKZONE SALES REPRESENTATIVE TO VERIFY PRODUCT DETAILS & AVAILABILITY



| ITEM | NAME | Q'TY | MATERIAL | FINISH |
|------|--------------|------|-------------------|--|
| 6 | SHELL | 1 | SUS304-1/2H | SOLDER AREA G/F OVER NI 50u" min |
| 5 | EMC | 2 | SUS304-H | SOLDER AREA G/F OVER NI 50u" min |
| 4 | MOLDING 3 | 1 | LCP E130I UL94V-0 | BLACK |
| 3 | GROUND PLATE | 1 | SUS301-H | CLEAN |
| 2 | DOWN CONTACT | 12 | C7025-TM03 | CONTACT AREA Au 15u" min ,SOLDER AREA G/F OVER NI 50u" min |
| 1 | UP CONTACT | 12 | C7025-TM03 | |

USB TYPE-C PIN ASSIGNMENTS

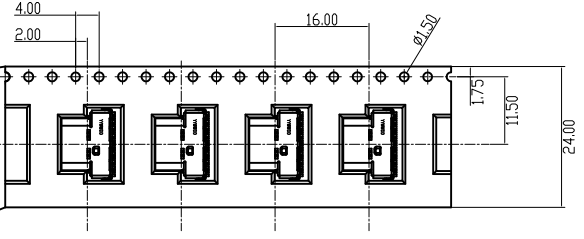
| PIN NUMBER | A1 | A2 | A3 | A4 | A5 | A6 | A7 | A8 | A9 | A10 | A11 | A12 |
|-------------|-----|--------|--------|------|------|-----|-----|------|------|--------|--------|-----|
| SIGNAL NAME | GND | SSTXp1 | SSTXn1 | VBUS | CC1 | Dp1 | Dn1 | SBU1 | Vbus | SSRXn2 | SSRXp2 | GND |
| PIN NUMBER | B12 | B11 | B10 | B9 | B8 | B7 | B6 | B5 | B4 | B3 | B2 | B1 |
| SIGNAL NAME | GND | SSRXp1 | SSRXn1 | VBUS | SBU2 | Dn2 | Dp2 | CC2 | Vbus | SSTXn2 | SSTXp2 | GND |

| | | | |
|------------------------|------------------|--|--------------------|
| 公差尺寸表 Tolerance | | 深圳市步步精科技有限公司 TITLE: TYPE-C 24P 母座 L=8.30 CH=1.58 板上四脚插 端子SMT | |
| X | ±0.50 X° ±2° | | |
| .X | ±0.30 .X° ±1° | DRAWN/ DATE: 设计 TSP | |
| .XX | ±0.15 .XX° ±0.5° | SIZE: A4 | UNIT: MM. |
| .XXX | ±0.10 | PART. NO: | 126-221-240003-H8G |
| CHECKED/ DATE: 审核 LYX | | SCALE: 1:1 | PROJECTION |
| APPROVED/ DATE: 核准 LJP | | DWG. PATH | REV.: 版本 |
| | | 0482-1 | |
| | | SHEET: 页码 | |

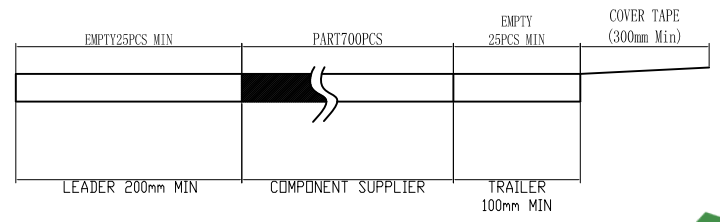


USER DIRECTION OF UNREELING

| REV. | DESCRIPTION | NAME | DATE |
|------|-------------|------|------|
| A | NEWS ISSUE | | |



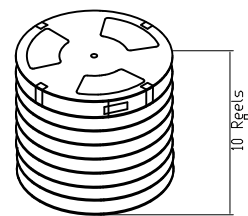
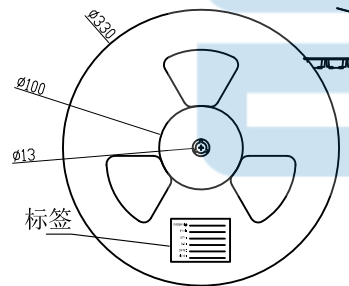
- NOTES
1. NUMBER OF CONNECTORS: 700PCS/REEL
 2. LEAD TAPE LENGTH



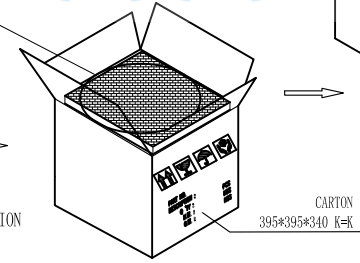
3. QUANTITY: 7000PCS/CARTON



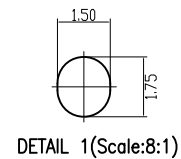
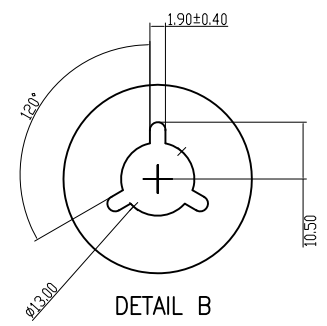
COVER TAPE PEELING ANGLE: 165°~180°
PEELING FORCE: 20~130g



Each top of the bottom of the carton is protected by a piece of pearl cotton



10 rolls per carton



| 公差尺寸表 Tolerance | | 深圳市步步精科技有限公司 | | | | | |
|----------------------|--|---|--------|------------|------------|------------------------------|--|
| x ±0.50 x.° ±2° | | TITLE: TYPE-C 24P 母座 L=8.30 CH=1.58 板上四脚插 端子SMT | | | | | |
| .x ±0.30 .x° ±1° | | DRAWN/ DATE | 设计 TSP | SIZE: A4 | UNIT: MM. | PART. NO: 126-221-240003-H8G | |
| .xx ±0.15 .xx° ±0.5° | | CHECKED/ DATE | 审核 LYX | SCALE: 1:1 | PROJECTION | REV.: 版本 | |
| .xxx ±0.10 | | APPROVED/ DATE | 核准 LJP | DWG. PATH | 0482-1 | SHEET: 页码 | |