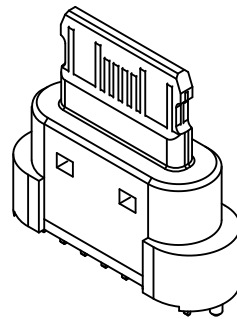
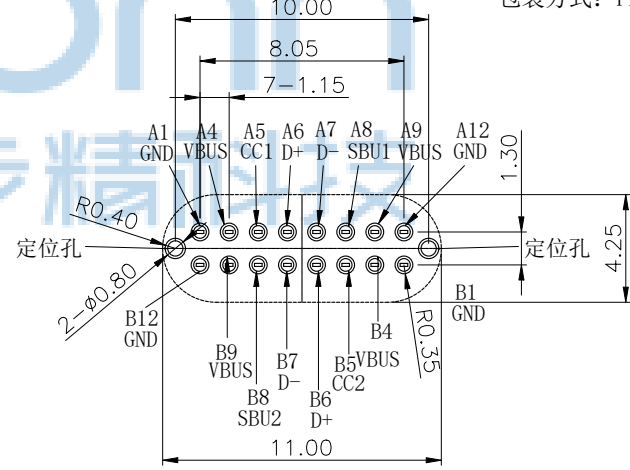
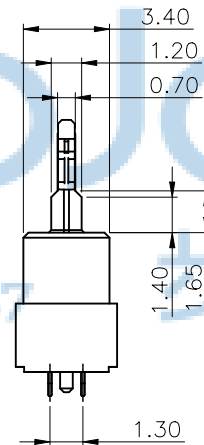
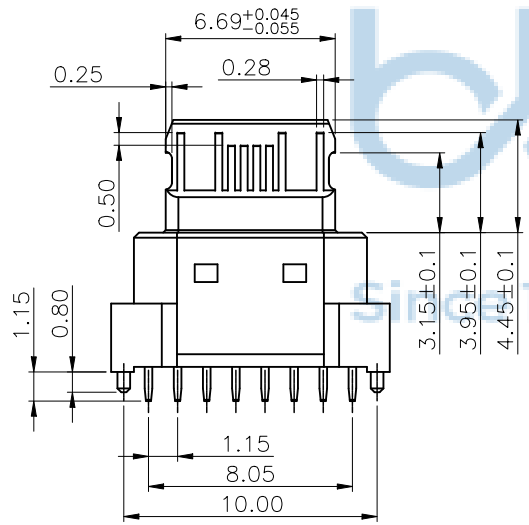
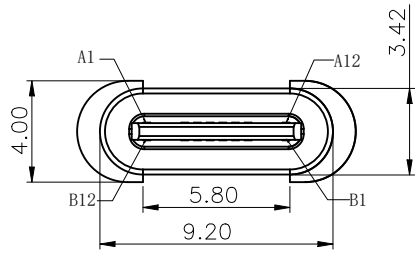


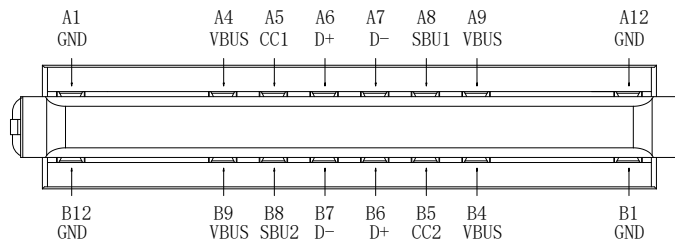
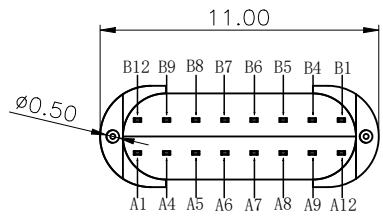
REV	ECN NO	CONTENT	DATE	ENGINEER
A0		INITIAL RELEASE	/	SGF



特性: Specifications
 电器 Electrical:
 接触阻抗: 初始最大不超过40mΩ Max, 测试后变化值不超过10mΩ Max
 耐电压: AC200V 60S/MIN, 0.5mA
 Max: DC500V, 60S/MIN, 100ΩMax
 绝缘阻抗: 100M ohms MIN
 额定电流: 2A MAX
 额定电压: 10V MAX
 材料: Material:
 Molding: LCP料耐高温塑胶
 端子: C2680 T=0.15mm
 卡勾: SUS301 T=0.15mm
 电镀规格:
 端子: 半金锡, 接触点镀金1u, 焊线处镀雾锡40-80u.
 中夹片: 清洗
 环保要求: ROHS, REACH标准.
 包装方式: PE袋 1000PCS/袋包装

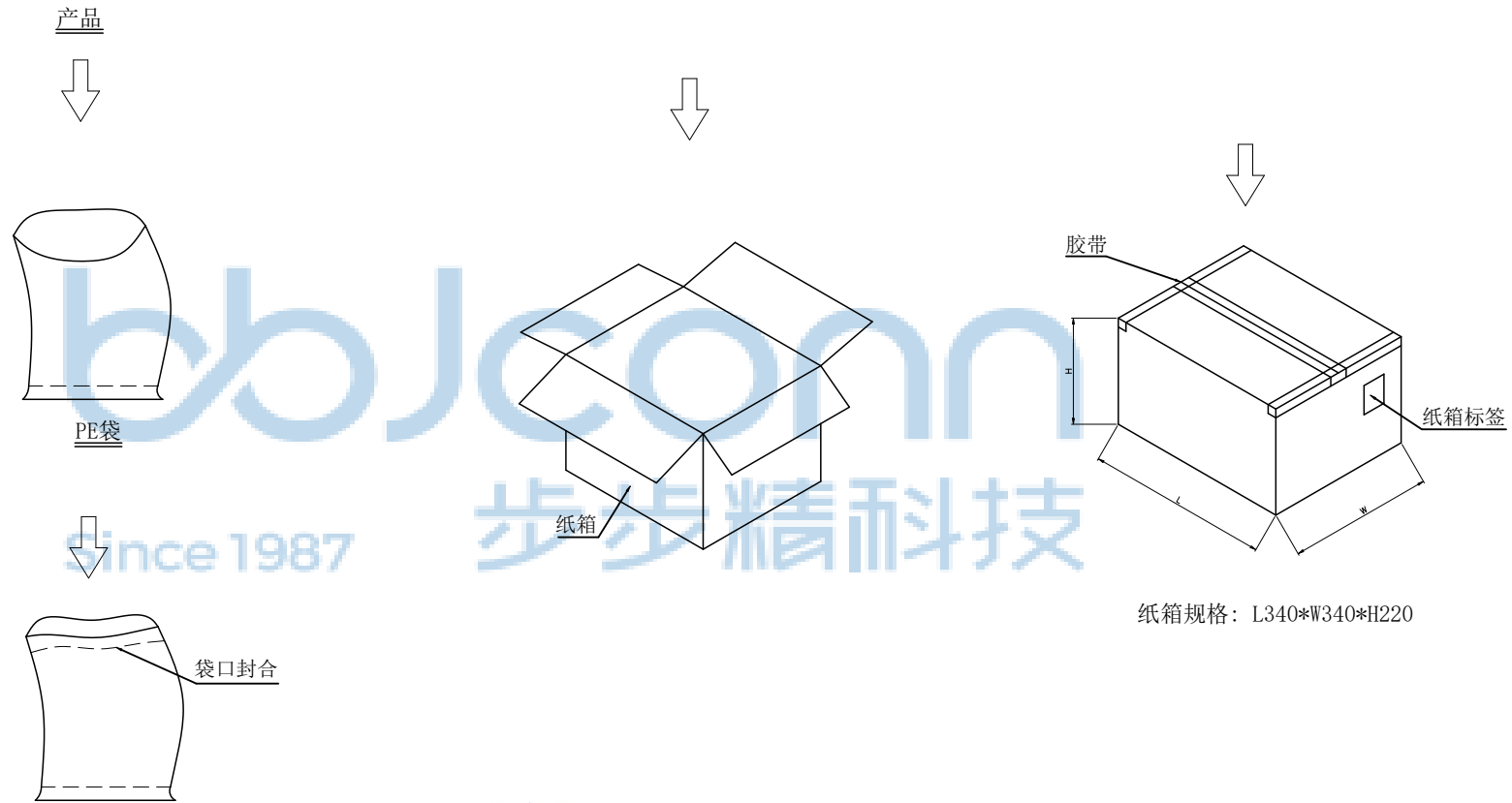


RECOMMENDED P.C.B. LAYOUT
TOLERANCE UNSPECIFIED ±0.05mm



THIS DOCUMENT IS THE SOLE PROPERTY OF BBJconn Technology Co.,Ltd. Corporation AND SHOULD NOT BE USED IN WHOLE PRIOR WRITTEN PERMISSION.		深圳市步步精科技有限公司 .X: ±0.38 X': ±3' .XX: ±0.25 X'': ±2' .XXX: ±0.13 .XX': ±1'	
APPD	JM_Zheng	NAME: TYPE-C 16P 母座 180度 端子DIP H=9.95 全塑 带柱 袋装	
CHKD	LYX	PJ NO: 126-225-160006-H8G SIZE:A4 DRW NO:	
PDWG NO: 0482-1	DR	SGF	FINISH:SEE NOTES MAT'L:SEE NOTES SCALE:N/A REV:A0 UNIT:mm PAGE:1/2

REV	ECN NO	CONTENT	DATE	ENGINEER
A0		INITIAL RELEASE	/	SGF



- 1、包装要求:
- 1.1 PE袋包装800pcs;
 - 1.2 每30袋放一个纸箱, 共计24000pcs;
 - 1.3 纸箱外贴上标签

THIS DOCUMENT IS THE SOLE PROPERTY OF BBJconn Technology Co.,Ltd. Corporation AND SHOULD NOT BE USED IN WHOLE PRIOR WRITTEN PERMISSION.		深圳市步步精科技有限公司	
PDWG NO: 0482-1		.X: ±0.38 .XX: ±0.25 .XXX: ±0.13	X*: ±3" .X*: ±2" .XX*: ±1"
APPD	JM_Zheng	NAME: TYPE-C 16P 母座 180度 端子DIP H=9.95 全塑 带柱 袋装	
CHKD	LYX		PJ NO: 126-225-160006-H8G
DR	SGF	SCALE: N/A	SIZE: A4 DRW NO: FINISH: SEE NOTES MAT'L: SEE NOTES REV: A0 UNIT: mm PAGE: 2/2