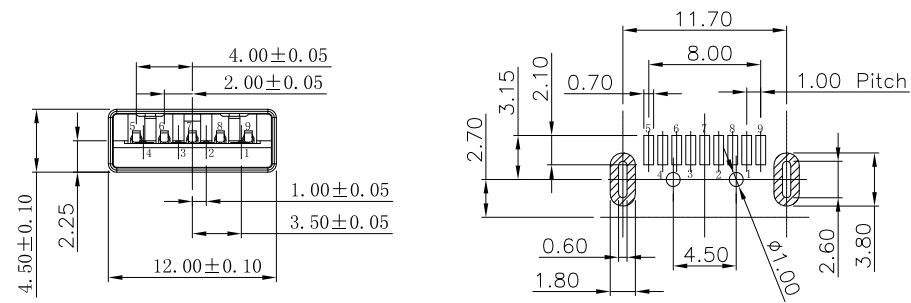
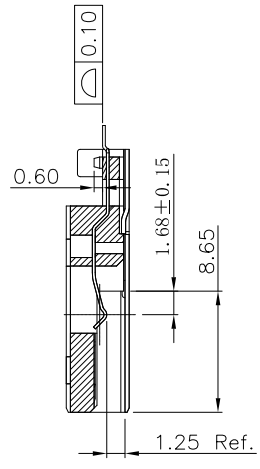
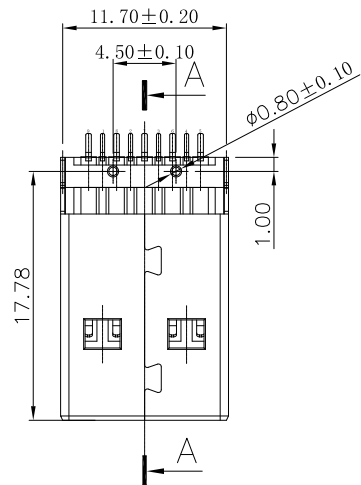
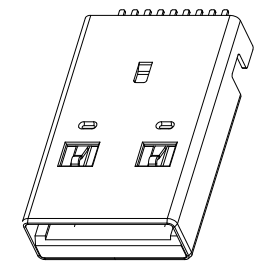
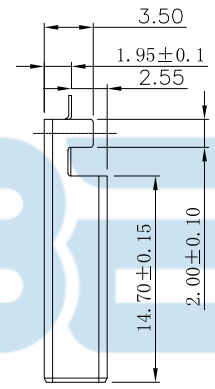
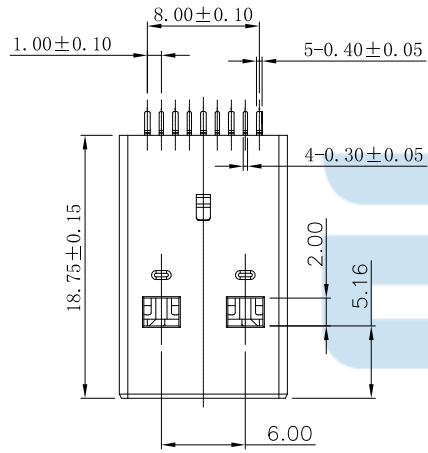




REV.	DESCRIPTION	NAME	DATE
A	NEWS ISSUE		



- Notes:
- Material:
 - Insulator : Thermoplastic G.F. UL94V-0, BULE
 - Contacts : Copper Alloy
 - Shell : SPCC
 - Environmental :
 - 55°C to +105°C
 - Electrical
 - Voltage : 30VAC(R.M.S)
 - Current Rating : 1.5 Ampere Min.
 - Contact resistance : 30 Milliohms Max.
 - Insulation resistance : 100 Megohms Min.
 - Dielectric withstanding voltage : 500 VAC
 - Finish
 - Shell : 50u" min. Nickel
 - Contacts : 1~30u" min. Gold on mating area.
 - 100u" min. Tin on the tails.



NO.	PART NAME	MATERIAL	DESCRIPTION
3	外壳	BRASS	NICKEL PLATED
2	端子	COPPER ALLOY	GOLD/TIN PLATED
1	胶芯	HIGH TEMPERATURE PLASTIC	UL94V-0

Pin NUMBER	SIGNAL NAME
1	VBUS
2	D-
3	D+
4	GND
5	StdA_SSRX-
6	StdA_SSRX+
7	GND_DRAIN
8	StdA_SSTX-
9	StdA_SSTX+
Shell	Shield

TOLERANCE UNSPECIFIED	
.0	±0.35
.00	±0.25
.000	±0.15
X.°	±2.00°
CUSTOMER DRAWING	

深圳市步步精科技有限公司

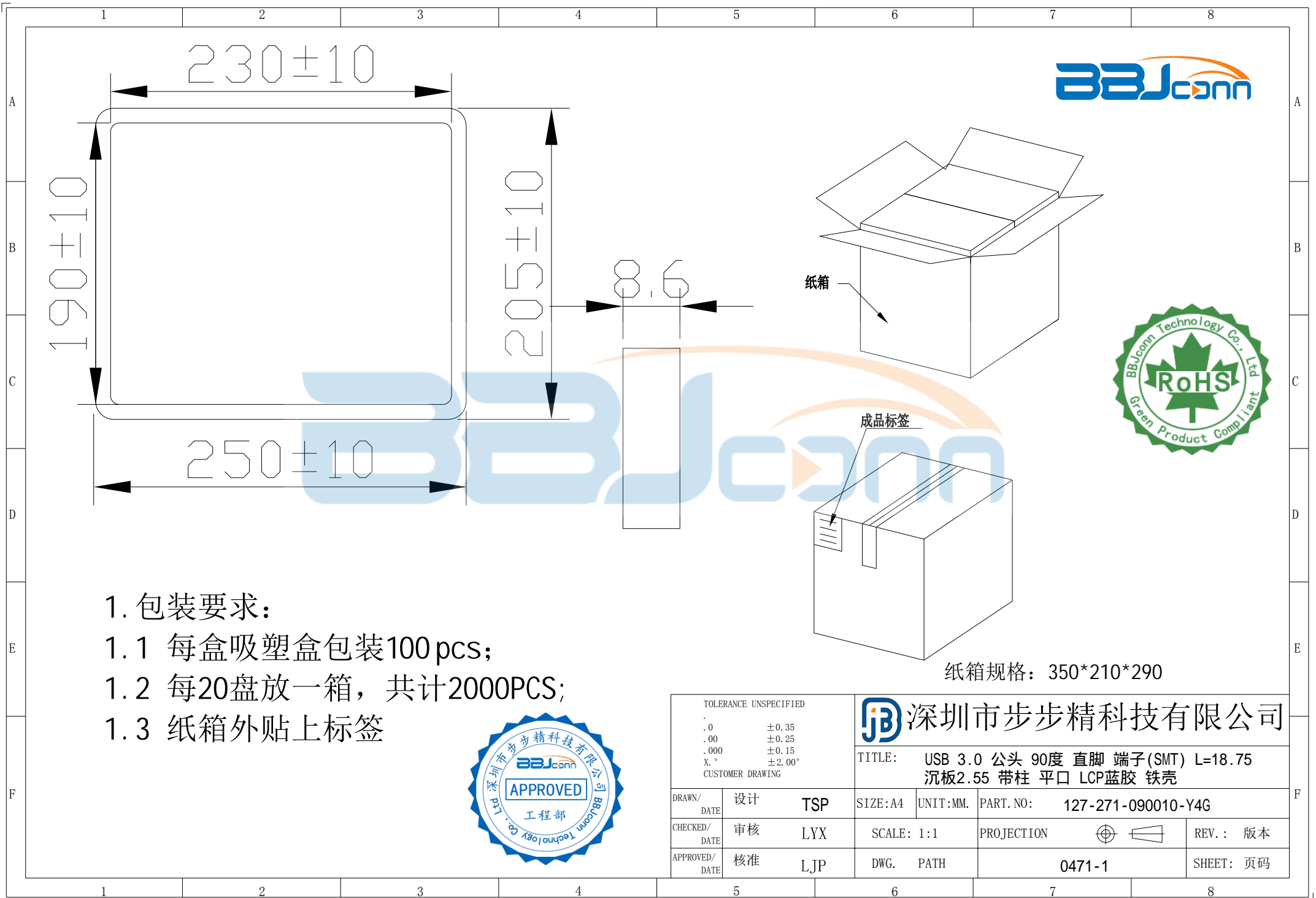
TITLE: USB 3.0 公头 90度 直脚 端子(SMT) L=18.75 沉板2.55 带柱 平口 LCP蓝胶 铁壳

SIZE:A4 UNIT:MM. PART. NO: 127-271-090010-Y4G

CHECKED/DATE: 审核 LYX SCALE: 1:1 PROJECTION: REV.: 版本

APPROVED/DATE: 核准 LJP DWG. PATH: SHEET: 页码

0471-1



1. 包装要求:

- 1.1 每盒吸塑盒包装100 pcs;
- 1.2 每20盘放一箱, 共计2000PCS;
- 1.3 纸箱外贴上标签



纸箱规格: 350*210*290

TOLERANCE UNSPECIFIED		深圳市步步精科技有限公司 TITLE: USB 3.0 公头 90度 直脚 端子(SMT) L=18.75 沉板2.55 带柱 平口 LCP蓝胶 铁壳			
.0	±0.35	SIZE: A4	UNIT: MM.	PART. NO: 127-271-090010-Y4G	
.00	±0.25	DRAWN/ DATE		SCALE: 1:1	PROJECTION
.000	±0.15	CHECKED/ DATE		REV.: 版本	
X. °	±2.00°	APPROVED/ DATE		DWG. PATH	SHEET: 页码
CUSTOMER DRAWING		0471-1			